

DESIGN

Auction 161 C

23. February 2022





DESIGN

AUCTION 161 C

WEDNESDAY, 23. FEBRUARY 2022

3 P.M.

**PREVIEW:
THERESIENSTR. 60**

Thursday	17.02.	10 a.m. - 6 p.m.
Friday	18.02.	10 a.m. - 6 p.m.
Saturday	19.02.	1 p.m. - 5 p.m.
Sunday	20.02.	1 p.m. - 5 p.m.
Monday	21.02.	10 a.m. - 6 p.m.
Tuesday	22.02.	10 a.m. - 3 p.m.

**QUITTENBAUM
Kunstauktionen GmbH**

Manging Director: Askan Quittenbaum
Theresienstrasse 60 · D-80333 Munich
Phone (+49) 89-27 37 02 10
Fax (+49) 89-27 37 02 122
E-Mail info@quittenbaum.de
Opening Time: Tuesday - Friday
3 p.m. - 6 p.m.
By appointment



Mitglied der Initiative
Datenbank
kritischer Werke



Bundesverband Deutscher Kunstversteigerer e.V.





436

**R. W. Winfield & Co., Birmingham (attr.)
Rocking chair, 1850s**

H. 109 x 61 x 95,5 cm. Iron, beige/green leather, wooden slats, brass.

Provenance: Collection of Prof. Dr. Florian Hufnagl.
Cf. Fiell, 1000 Chairs, Cologne 1997, p. 45; cf. Ostergard (ed.), Bent Wood and Metal Furniture, New York 1987, p. 211.

€ 800 - 1.200



436

437

**Thonet or Kohn, Vienna
2 chairs, 1860s**

H. 88 x 39 x 54 cm; H. 88 x 45 x 41 cm. Beech bentwood, stained dark, plywood, meshwork. Marked: Remains of a manufacturer's label.

Provenance: Collection of Prof. Dr. Florian Hufnagl.
Image online.

€ 250 - 300

438

**England
Salon table, 1880s**

H. 76 cm, Ø 105.5 cm. Mahogany wood, mahogany veneer, casters.

Provenance: Collection of Prof. Dr. Florian Hufnagl.
Image online.

€ 400 - 500

439

**Thonet, Vienna
Table 'no. 8', c. 1886**

H. 75.5 cm, Ø 75.5 cm. Beech bentwood, stained dark, blockboard with walnut veneer, stained dark.

Used by Adolf Loos in a slightly modified version to furnish the Café Museum, Vienna, in 1899.

Provenance: Collection of Prof. Dr. Florian Hufnagl.
Cat. Thonet 1886, p. 14; Bangert / Ellenberg, Thonet Möbel, München 1997, p. 96.

Image online.

€ 500 - 600

440

**Thonet, Vienna
Garden bench and 2 'knot construction' chairs, 1891**

Bench: H. 87.5 x 126.5 x 47 cm; Chairs: H. 86 x 44 x 50.5 cm. Acacia wood, painted red.

€ 1.200 - 1.500

441

**Josef Hoffmann (after)
4 nesting tables, c. 1904**

H. 55-70.5 x 29-54 x 29-40.5 cm. Made by Franz Wittmann, Etsdorf. Ash wood, painted black.

Cf. Schweiger, Wiener Werkstätte, Vienna 1982, p. 34.

Image online.

€ 600 - 800



440



442

442
Richard Riemerschmid
Armchair, 1900

H. 84.5 x 59.5 x 52.7 cm. Made by J. Fleischauer's Sons, Nuremberg. Oak wood.

Exh. cat. Richard Riemerschmid, Munich 1982, p. 155, No. 84c.

€ 1.800 - 2.200

443
Sweden
2 'Munk' chairs with table, c. 1905

Chairs: H. 80 x 60 x 54 cm; Table: H. 71 x 64 x 73 cm. Oak, turned and carved, poly-chrome textile upholstery.

The table and chairs were acquired in 1905 by the family of the previous owner.

€ 900 - 1.200

444
Josef Hoffmann (after)
'Purkersdorf - Variant' armchair, c. 1905

H. 71 x 51 x 49 cm. Wood, painted white. Similar to J. Hoffmann's designs for the Purkersdorf sanatorium.

Image online.

€ 500 - 600

445
Charles Rennie Mackintosh
'322' - 'DS 1' table, 1915

H. 75 x 125 x 54-177 cm. Made by Cassina, Milan, 1980 / 90s. Ash wood, ash veneer, stained black. Marked: Cassina, signet Charles Rennie Mackintosh, facsimile signature Mackintosh (white stamp), 5359 (embossed).

Image online.

€ 800 - 1.200

446
Germany
Uplight, 1920s

H. 164 x 39.5 x 35 cm. Tubular brass, sheet brass.

€ 1.200 - 1.500

447
Germany (attr.)
Screen, 1920s

173 x 130.5 cm. Wooden frame, oil on canvas.

€ 1.500 - 1.800

448
Vereinigte Werkstätten, Munich
Sideboard, 1920s

H. 69.5 x 130 x 33 cm. Wooden box construction, teak, maple and burl wood veneers, brass. Marked: manufacturer's label.

€ 1.500 - 1.800



443



446

449

**Vereinigte Werkstätten, Munich (attr.)
Side table, 1920s**

H. 58.5-70.5 cm, Ø 74 cm. Walnut, blockboard with walnut veneer, tubular metal.

Height adjustable.

Image online.

€ 700 - 800

450

**Zeiss Ikon AG, Berlin
Ceiling light, 1920s**

H. 34 cm, Ø 26 cm. Tubular brass, sheet brass, partially blackened, frosted glass. Marked: remains of a manufacturer's mark.

Image online.

€ 500 - 600

451

**Thonet, Vienna
Armchair, c. 1922**

H. 78.5 x 54 x 53.5 cm. Beech bentwood, plywood, beech.

Marked: THONET embossing, manufacturer's label.

Image online.

€ 150 - 200



447



453

452

**Carl Jacob Jucker (after)
Floor lamp, 1923**

H. 145 cm (max.), Ø 23 cm. Made by imago dp, Milan, 1970s. Chrome-plated tubular steel, painted white respectively blue.

Image online.

€ 500 - 600

453

**Gyula Pap
'B ST 23' floor lamp, 1923**

H. 160 cm, Ø 37 cm. Made by Tecnolumen, 1980s. Chrome-plated tubular steel, clear and matt glass. Marked: Manufacturer's mark.

Cf. Cat. Design im 20. Jahrhundert, MAK, Cologne 1989, p. 318.

€ 800 - 900



448



454

454
Eileen Gray
Daybed, 1925

H. 60 x 193 x 86 cm. Made by ClassiCon, Munich. Tubular metal, chrome-plated, black leather. Marked: manufacturer's patch.

€ 2.200 - 3.000

455
Edouard Wilfrid Buquet
Desk light, 1927

H. 91 cm. Made by Buquet, Paris. Tubular metal, copper- and nickel-plated, sheet aluminum, bakelite and wood, painted black. Fiell, 1000 Lights, vol. 1, Cologne 2005, p. 244.

€ 1.500 - 2.000



455

456
Willem Hendrik Gispen
'Diagonal' chair, c. 1927

H. 84 x 51.5 x 61 cm. Made by Gispen, Rotterdam. Tubular steel, chrome-plated, gray-blue textile cover, black plastic. Cf. Ostergard (ed.), Bent Wood and Metal Furniture, New York 1987, p. 291, fig. 82 (as armchair); cf. Koch, WH Gispen, Rotterdam 1988, p. 73, fig. 100 (stoel no 1) and p. 84, fig. 123.

Image online.

€ 600 - 700

457
Marcel Breuer
'B 34' armchair, 1928

H. 85.5 x 57.5 x 66.5 cm; Tube: Ø 2-2.5 cm. Made by Thonet, Frankenberg. Tubular steel, chrome-plated, plugged, two brackets, cream-colored textile cover, beech wood. Vegesack, Deutsche Stahlrohrmöbel, Munich 1986, p. 74.

Image online.

€ 500 - 700

458
Eileen Gray
Prototype 'Barstool No. 2', 1928

H. 74.5 x 39 x 30 cm. Made by Vereinigte Werkstätten, Munich, c. 1989 (attr.). Strip metal, black leather, metal rods, wood, painted black.

€ 1.000 - 1.500

459
Le Corbusier; Charlotte Perriand;
Pierre Jeanneret
'LC 2' settee, 1928

H. 67.5 x 117 x 70 cm. Made by Cassina, Milan. Chrome-plated tubular steel, black/brownish textile. Marked: Le Corbusier LC/2. Fabric discolored.

Exh. cat. Charlotte Perriand, CGP, Paris 2005, p. 12, p. 151; De Fusco (ed.), Le Corbusier, Designer: Furniture, 1929, Reprint, Woodbury 1977, p. 62f.

Image online.

€ 1.200 - 1.500



458



460

460

**Robert Dudley Best
'Bestlite' table light, 1928**

H. 51-81.5 cm, Ø 15.5 cm. Made by Best & Lloyd, Birmingham. Iron base, painted black, tubular metal, chrome-plated, sheet aluminium, painted black, black hard rubber. Marked: manufacturer's imprint BRITISH ring 762006 BEST, BESTLITE.

Fiell, 1000 Lights, vol. 1, Cologne 2005, p. 279.

€ 800 - 900

461

**Germany
Large ceiling light, c. 1928**

H. 13.5 cm, Ø 65 cm. Colorless glass, matt, metal, nickel-plated.

Image online.

€ 900 - 1.200

463

**Ludwig Mies van der Rohe
'Barcelona' daybed, 1929**

H. 38 x 82 x 193 cm. Made by Thonet, Frankenberg or Knoll International, New York. Tubular steel, chrome-plated, feet painted red, plywood, black leather. Marked: adhesive tape with inscription: SIGRID NEUBERT MÜNCHEN (2x); Sticker: 001.

Provenance: originally from the possession of Sigrid Neubert (one of the most important German architectural photographers of the 1960s / 70s), then, as a gift, to the consignee. Sigrid Neubert was good friends with Mies van der Rohe.

Exh. cat. Ludwig Mies van der Rohe, Vitra Design Museum, Weil / Rhine 1998, p. 119; Reuter, Mies und das Neue Wohnen, Ostfildern 2008, p. 194.

€ 3.500 - 5.000



463

462

**Alvar Aalto
6 '11' / '611' stacking chairs, 1929**

H. 80 x 48.5 x 50.5 cm. Made by Artek, Helsinki. Birch wood, birch plywood, painted colorless and black. Marked: manufacturer's stamp.

Cf. Kellein, Alvar & Aino aalto. design, Ostfildern 2005, p. 19.

Image online.

€ 1.200 - 1.800

464

**Eliel Saarinen
6 'Cranbrook' chairs, 1929/30**

H. 96 x 43.5 x 47 cm. Made by Adelta Oy, Helsinki, 1980s. Birch wood, partially stained black, blue textile upholstery.

€ 3.200 - 4.000



464

465

Alvar Aalto
2 '296' drawers, 1930

H. 63.5-65.5 x 38 x 69.5 cm. Made by Huonekalu-ja Raken-
nustyötehdas Oy, Turku or Artek, Helsinki. Birchwood, painted
white.

Exh. cat. Alvar Aalto Möbel The Kossdorf Collection, Museum
Mobiliendepot, Vienna 2002, p. 41.

Image online.

€ 400 - 500

466

Germany
Drawing table, c. 1930

H. 86-162 x 120 x 67-87.5 cm. Germany. Beech wood, metal.

In 2016 we were already able to offer an identical model of the
drawing table. At that time Sergius Ruegenberg was identified
as the original owner. The table was set in the studio of Mies van
der Rohe, Berlin. In the 1960s, Ruegenberg himself illustrated the
location of the drawing table in a memory sketch of the office at
Am Karlsbad 24.

€ 800 - 1.200



467

France
Ceiling light, c. 1930

H. 88 cm, Ø 91 cm. Tubular metal,, sheet metal, nick-
el-plated and copper-plated, glass.

€ 1.500 - 2.500

468

Fretus, Borås
2 clip-on lights, c 1930

H. 44 cm, Ø 17 cm. Tubular aluminum, aluminum sheet,
rubber. Marked: Manufacturer's sticker.

Image online.

€ 250 - 300

469

Germany
2 stools, 1930s

H. 43-45 x 40 x 40 cm. Wood, painted red and light
green, wickerwork.

Image online.

€ 550 - 600



473

470

Germany
Ceiling light for a nursery, 1930s

H. 68.5 cm, Ø 23 cm. Glass, white and yellow, painted green, wood, painted in multiple colors.

Image online.

€ 600 - 700

471

Kodak AG, Berlin
Floor lamp, 1930s

H. 183 - c. 250 cm, Ø 58 cm. Tubular metal, chrome-plated, partially painted black, sheet aluminum, cast metal, metal wire, casters. Marked: manufacturer's badge.

€ 800 - 900

472

Czecho-Slovakia (attr.)
Wall light, 1930s

H. 77-131.5 cm. Tubular metal, painted black, square metal tube, nickel-plated, sheet metal, painted black.

€ 900 - 1.200

473

France
4 wall appliques, 1930s

H. 36 x 25 x 17 cm. Cement.

€ 6.500 - 7.500

474

Jindřich Halabala
2 'H 269' easy chairs and ottoman, 1930/40s

H. 75 x 70 x 89 cm; Ottoman: H. 40 cm, Ø 42,5 cm. Made by Thonet Mundus, Czecho Slovakia. Beech bentwood, stained black, grey/blue fabric. Marked: P43X.

Chatrny, Jindrich Halabala, Brno 2003, p. 111.

€ 3.000 - 4.000



474



475

475

**Arthur Korn
Armchair, 1930s**

H. 73 x 55.5 x 60.5 cm. Made by L&C Arnold, Schorndorf. Tubular steel, painted white, original blue textile cover.

Mačel, 2100 Metal Tubular Chairs, Rotterdam 2006, p. 181.

€ 2.000 - 2.500

476

**Eileen Gray
4 'Roquebrune' chairs, 1932**

H. 79 x 45 x 53 cm. Made by ClassiCon, Munich. Tubular metal, chrome-plated, black leather. Marked: ClassiCon facsimile signature and number (stamp).

Adam, Eileen Gray, Kilchberg / Zurich 1989, p. 276, 285 (model).

€ 1.500 - 2.000

477

**Sven Markelius
6 'Orkesterstolen', 1932**

H. 80 x 45,5 x 47 cm. Made by Svenska Mobelfabriken, Bodafors. Birchwood and birch plywood.

Gordan, Svenska Stolar, Stockholm 2002, p. 78; Boman et al., Svenska Möbler, Kristianstad 1991, p. 197.

€ 1.200 - 2.000



477

478

**Marianne Brandt (attr.)
Table- / wall light 'Tastlicht', c. 1932**

H. 24 cm. Made by Gothaer Metallwarenfabriken, Gotha, after 1937. Sheet metal, painted cream white, brass, partially nickel-plated, switch made of white plastic, shade made of glass, colorless, eggshell white, matt. Marked: GMF, DRPDRWZ Aus.-Patente (black stamps).

€ 600 - 800



476

479

Alvar Aalto
Dining table 'L-Leg' - '90', 1933

H. 69.5 cm, Ø 99.5 cm. Made by Artek, Helsinki, 2008. Laminated birch wood, plywood, black linoleum. Marked: manufacturer's sticker.

Cf. Alvar Aalto Foundation (ed.), Alvar Aalto Designer, Vammala 2005, p. 173.

Image online.

€ 300 - 500

480

Alvar Aalto
'L-Leg' - '70' console table, 1933

H. 71 x 120 x 60.3 cm. Made by Artek, Helsinki. Laminated birch wood, plywood, white formica.

Cf. Kellein, alvar & aino aalto. design, Ostfildern 2005, p. 99.

Image online.

€ 300 - 400

481

Alvar Aalto
'34 / 402' armchair, 1933

H. 68 x 62 x 76.5 cm. Made by Huonekalu-ja Rakennustyötehdas Oy, Turku for Artek, Helsinki, 1940 / 50s. Birch plywood, plywood, textile cover in zebra look. Marked:

626 (stamp).

Kellein, Alvar & Aino aalto. design, Ostfildern 2005, p. 116.

€ 2.200 - 2.800

482

Alvar Aalto
Two 'L-Leg' tables, c. 1933

H. 70 x 150 x 75 cm. Artek, Helsinki. Laminated birch wood, birch wood, cremewhite linoleum.

Cf. Kellein, alvar & aino aalto. design, Ostfildern 2005, p. 96.

Image online.

€ 500 - 600

483

Gerrit Rietveld
'Crate' desk, 1934

H. 70.5 x 120 x 60 cm. Made by Cassina, Milan. Ash wood, colorless lacquer.

Marked: manufacturer's stamp.

Exh. cat. Gerrit Th. Rietveld, Central Museum Utrecht, Utrecht 1992, p. 156.

€ 1.500 - 2.000

484

Mart Stam
2 'B 43/1' chairs, 1935

H. 83 x 39 x 51.5 cm. Made by Thonet, Frankenberg. Tubular steel, chrome-plated, plywood, painted blue. Marked: manufacturer's metal plaque on one of the two chairs.

Vege sack, Deutsche Stahlrohrmöbel, Munich 1986, p. 131.

€ 1.000 - 1.200



478



481



483



484



488

485

**Alvar Aalto
2 '65' bar stools, 1934**

H. 71 x 38 x 38.5 cm. Made by Artek, Helsinki. Laminated birch wood, plywood, colorless varnish.

Cf. Kellein, alvar & aino aalto. design, Ostfildern 2005, p. 94.

Image online.

€ 450 - 500

486

**WMF, Geislingen
'Ikora' table light, c. 1935**

H. 44 cm. Marble base, chrome-plated brass shaft, cream-white textile shade. Marked: Ikora mark (embossed).

Lampshade replaced.

Image online.

€ 400 - 500



492

487

**Christian Dell
3 '6556' task lights, 1934**

H. 46.5 cm, Ø 21.3 cm. Made by Kaiser & Co., Neheim-Hüsten. Sheet metal, tubular metal, painted black. Marked: ORIGINAL KAISER idell, one light with the original manufacturer's label.

Image online.

€ 700 - 800

488

**Hans Luckhardt; Wassili Luckhardt
'Siesta Medizinal' recliner, 1936**

H. 73-109,5 x 68 x 93,5-163 cm. Made by Thonet, Frankenberg. Beechwood, elm wood, painted red and white, sheet metal, synthetic leather.

As early as the late 1920s, early 1930s, around the same time as Le Corbusier, Perriand and Jeanneret developed their 'Chaiselongue', Hans Luckhardt (sometimes with the collaboration of Anton Lorenz) worked on so-called 'movement chairs'. He dealt with the medical problems of sitting and, together with Thonet, created experimental models that culminated in the production of a series of deck chairs called 'Siesta Medizinal'. The special mechanics were completely novel, enabling a synchronous adjustment of support for the back, upper and lower legs by mere shifting of the weight due to some kind of 'integral gear'. This lounge is, among other designs, in the collection of the Vitra Design Museum, Weil am Rhein and many other international museums and collections Exh. 100 Masterpieces, Vitra Design Museum, Weil am Rhein 1995, p. 80/81.

€ 800 - 900



495



497

489

**Bruno Mathsson
'Annika' side table, 1936**

H. 29 cm, Ø 45 cm. Made by DUX, Trelleborg. Birch, birch plywood. Marked: Bruno Mathsson by DUX (branding).
Image online.

€ 450 - 500

490

**Mart Stam
'S 23 R' armchair, 1939**

H. 83 x 54 x 57 cm. Made by Mauser-Werke, Waldeck. Tubular steel, chrome-plated, beech wood, stained dark, wickerwork. Marked: manufacturer's badge.

Cf. Vegesack, Deutsche Stahlrohrmöbel, Munich 1986, p. 140.

Image online.

€ 400 - 500

491

**Mauser-Werke, Waldeck
Coffee table, 1939**

H. 68 cm, Ø 76 cm. Tubular steel, chrome-plated, wood, stained on ebony. Cf. Vegesack (ed.), Deutsche Stahlrohrmöbel, Munich 1986, p. 140.

Image online.

€ 700 - 900

492

**Denmark
Armchair, 1940 / 50s**

H. 74 x 64 x 66.5 cm. Elm wood, leather, leather straps. Some leather straps replaced.

€ 800 - 900

493

**Aino Aalto
'Spindle' chair, 1944**

H. 81.5 x 43.5 x 50.5 cm. Made by Artek, Helsinki. Birch wood, textile upholstery, cream-white. Marked: Aalto Design, Artek.

Image online.

€ 300 - 400

494

**Jacob Müller
2 stools, 1944/45**

H. 45 x 42 x 32.5 cm - H. 46 x 42 x 33 cm. Made by Wohnhilfe, Zurich. Elmwood.

Rüegg (Ed.), Schweizer Möbel und Interieurs, Basel 2002, p. 358.

Image online.

€ 500 - 700

495

**Karel Koželka; Antonín Kropaček
Armchair, c. 1944**

H. 72 x 67 x 82 cm. Made by Interier Praha, Prague. Bentwood, textile cover in zebra look.

Fabric renewed.

The design received a silver medal at the Milan Triennial in 1944.

€ 800 - 900

496

**Alvar Aalto
Side table 'Y85', c. 1947**

H. 60 x 76 x 76 cm. Made by Artek, Helsinki. Birch wood, laminated birch wood, block board with teak veneer.

Alvar Aalto Museum (ed.), Alvar Aalto Designer, Helsinki 2002, p. 180.

Image online.

€ 400 - 500

497

**Jean Prouvé
'Visiteur' armchair, 1948**

H. 93.5 x 63 x 105 cm. Made by Tecta, Laufenförde, 1990s. Steel strip and sheet steel, chrome-plated, white leather, casters.

Cf. Seguin / Navarro, Jean Prouvé, Paris 1998, S. 282ff., S. 292f.; Exhib.-cat. Jean Prouvé, Vitra Design Museum, Weil am Rhein 2007, p. 303; Cf. Sulzer, Jean Prouvé, Complete works, Vol. 3, Basel 2000, p. 161.

€ 1.500 - 1.800



498

498
Hans J. Wegner
'AT33' sewing cabinet, 1949

H. 60,5 x 66.5-119 x 59,5 cm. Made by Andreas Tuck, Copenhagen. Teak, teak veneer, oak, wickerwork. Marked: Manufacturer's branding.

Hansen / Petersen, Den Store Danske Møbelguide, nr 2005, p. 309.

€ 1.000 - 1.500



499

500
Arthur Umanoff
Lounge chair, c. 1950

H. 64 x 77 x 70.5 cm. Made by Raymor, New York. Tubular metal, painted black, wickerwork.

€ 1.200 - 1.500

499
Egon Bro Pedersen
Dresser, 1950s

H. 80 x 84 x 48 cm. Made by K. Thomsen, Snedkermester. Wooden box construction, teak and teak veneer. Marked: manufacturer's label.

€ 1.800 - 2.200

501
Florence Knoll
'T-angle' side table, 1952

H. 40.5 x 87.5 x 86.5 cm. Made by Knoll International, New York. Sectional metal, painted black, ash wood slats. Rouland, Knoll Furniture, Atglen 1999, p. 110f.

€ 900 - 1.200

502
Germany
2 stage spotlights for wall / ceiling mounting, 1950s

H. 87.5 x 43 x 57 cm. Sheet metal, enameled gray-blue, white inside, glass, colorless. Marked: Glass: 'tw' (etched).

€ 1.000 - 1.500



500



501



502

503

**Harry Bertoia
'Bird' armchair, 1950**

H. 97 x 97 x 91.5 cm. Made by Knoll International, New York. Metal rods, metal wire, painted white, orange-red textile cover, rubber buffers.

Rouland, Knoll Furniture, Atglen 1999, p. 74.

Image online.

€ 900 - 1.200



504

504

**Harry Bertoia
'Bird chair' with ottoman, 1950**

Armchair: H. 101.5 x 98 x 88 cm; Ottoman: H. 39.5 x 61 x 46 cm. Made by Knoll International, New York. Metal rods, metal wire, chrome-plated, beige-gray textile cover, rubber buffers. Marked: manufacturer's mark.

Rouland, Knoll Furniture, Atglen 1999, p. 74.

€ 900 - 1.200



505

**Harry Bertoia
'Diamond chair' - '422', 1952**

H. 76 x 84 x 76 cm. Made by Knoll International, New York. Metal rods, metal wire, painted black and white, beige-gray textile cover.

Rouland, Knoll Furniture, Atglen 1999, p. 76.

Image online.

€ 250 - 300

506

**Harry Bertoia
'Diamond chair' - '422', 1952**

H. 74 x 115 x 78 cm. Made by Knoll International, New York. Metal rods, metal wire, chrome-plated, rubber buffers, beige-gray textile cover.

Rouland, Knoll Furniture, Atglen 1999, p. 76.

Image online.

€ 400 - 500

507

**Harry Bertoia
4 '420' chairs, 1952**

H. 74.5 x 53 x 58 cm. Made by Knoll International Italy. Metal rods, metal wire, varnished white. Marked: Manufacturer's sticker, Made in Italy.

Rouland, Knoll Furniture, Atglen 1999, p. 58.

€ 1.200 - 1.500



507



508

**Carl Pott
Flatware '784/84' for 16, 1952**

193 pieces. 2 salad servers, butter knife, cold meat fork, cold meat knife, ladle, 18 ice cream spoons, 16 fruit forks, 18 coffee spoons, 18 bouillon spoons, 18 dining spoons, 17 dining knives, 18 appetizer knives, 17 fruit knives, 18 dessert forks, 17 dining forks, 18 Fish knives. L. 11.1-29.5 cm. Made by Hugo C. Pott, Solingen. Silver. Marked: German hallmarks 800 POTT, No. 84, workshop signet (embossed).

Worn. Blades of the knives partially replaced; a few pieces still in the original plastic cover.

Lepper-Binnewerg, Carl Pott, Hamburg 1993, p. 43.

€ 3.000 - 4.000

509

**Florence Knoll
'T-Angle' table, 1952**

H. 51.5 x 81 x 81 cm. Made by Knoll International, New York. Profile steel, painted white, black slate plate.

Rouland, Knoll Furniture, Atglen 1999, p. 110f. Image online.

€ 400 - 500

510

**Florence Knoll
'T-angle' side table, 1952**

H. 50 x 86 x 87 cm. Made by Knoll International, New York. Sectional steel, painted black, green marble top.

Rouland, Knoll Furniture, Atglen 1999, p. 110f. Image online.

€ 400 - 500

511

**Armin Wirth
8 'Aluflex' chairs, 1951**

H. 82.5 x 43 x 49 cm. Made by Philip Zieringer Metallwerke, Switzerland. Aluminum tube, aircraft plywood, colorless varnish.

Frey, Schweizer Möbeldesign 1927-1984, Lausanne 1996, p. 83; Sembach, Neue Möbel, Stuttgart 1982, p. 64; Zwicky (Ed.), Schweizer Möbellexikon, Zurich 2005, p. 50.

€ 2.200 - 3.000



511



512

512

Hans Georg Bellmann (style)
3 stacking tables, c. 1952

H. 47.5 x 50.5 x 34.5 cm. Tubular metal, painted black, plywood with teak veneer.

€ 900 - 1.200



514

513

William Katavolos; Ross F. Littell; Douglas Kelley
Coffee table, 1952/ 53

H. 41 x 76 x 76 cm. Made by ICF, Cadsana; De Padova, Italy for Laverne International. Tubular steel and square steel tubing, chrome-plated or black lacquered, blockboard with teak veneer. Image online.

€ 500 - 600

514

Gunnar Hasth
Small '390' sofa, 2 armchairs and coffee table, c. 1952

Armchair: H. 75 x 68.5 x 70 cm; Sofa: H. 77 x 118 x 70 cm; Table: H. 51 x 105 x 55 cm. Made by Brödarna Holm, Ransta (Sweden). Bamboo cane, woven rattan, floral textile cover, colorless glass. Scandinavian Retro, No 3, 2021, p. 20.

€ 600 - 700

515

Mathieu Matégot (style)
2 chairs, 1950s

H. 84.5 x 44.5 x 58 cm. Tubular metal, metal rods, perforated metal sheet, painted white.

Image online.

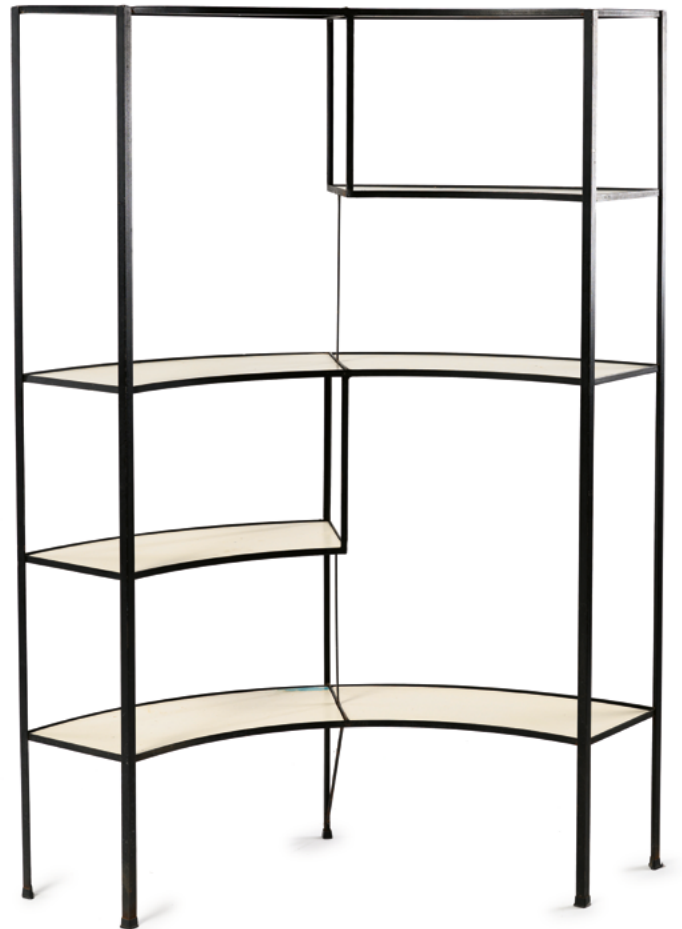
€ 600 - 700

516

USA
Shelf / room divider, 1950s

H. 163 x 120 x 40 cm. Sectional metal, painted black, Pavatex panels, painted white.

€ 2.000 - 2.200



516

517

**Rawi Factories, Winschoten
'Achilles' daybed, 1950s**

H. 37.5 x 190 x 80 cm. Tubular metal, sheet metal, painted light gray, steel springs, marked: Manufacturer's sticker (Achilles NV Rawi Fabrieken Winschoten).

Image online.

€ 400 - 500

518

**Sven-Erik Fryklund
'Göta' rocking chair, around 1954**

H. 81 x 55 x 86 cm. Made by Hagafors Stolfabrik, Hagafors. Wood, black lacquered, beech wood.

Marked: Manufacturer's branding stamp.

Cf. Scandinavian Retro, number 3, 2020, p. 42 (chair).

Image online.

€ 500 - 600

519

**Friso Kramer
6 'Revolt' chairs, 1954**

H. 81 x 45.5 x 51 cm. Made by Ahrend Cirkel, The Hague, 1965. Sectional steel, painted gray, plastic ('Ciranol'), red. Marked: Ahrend Cirkel.

Cf. Exh. cat. Holland in Vorm, Stedelijk Museum Amsterdam, The Hague 1987, p. 160; Dosi Delfini/Van Dalen, The Furniture Collection, Stedelijk Museum, Amsterdam 2004, p. 219.

€ 900 - 1.200



519

520

**Friso Kramer; Wim Rietveld
'Reply' drawing desk and stool, 1954**

Desk: H. 77 x 110 x 80 cm; adjustable stool: H. 67 cm, Ø 56 cm. Made by Ahrend Cirkel, Den Haag. Sectional metal, tubular metal, painted gray, tabletop: white plastic laminate; stool: plywood seat.

Pfannschmidt, Metallmöbel, Stuttgart 1968, p. 106 (drawing desk).

Image online.

€ 600 - 700

521

**Georg Leowald
4 chairs, 1954**

H. 78 x 47.5 x 43,5 cm. Made by Wilkhahn, Eimbeckhausen. Wood, painted dark green, black leather.

Sembach, Neue Möbel, Stuttgart 1982, p. 28.

€ 600 - 800



521



523

523

**Falkenberg Belysning, Malmö
Floor lamp, 1950s**

H. 117 cm, Ø 32 cm. Tubular steel, painted gray, tubular brass, textile shade made of beige cords. Marked: manufacturer's sticker.
€ 800 - 900

524

**Hans Bergström
Table light, c. 1950**

H. 40 cm, Ø 31.5 cm. Made by Ateljé Lyktan, Åhus. Iron, sheet brass, tubular brass, wrapped with brown leather.
Image online.
€ 400 - 500

525

**Italy (attributed)
Desk with bookshelf, 1950s**

H. 78 x 110 x 75 cm. Fruitwood veneer, beechwood veneer, plywood, tubular brass, clear glass, parchment.
€ 1.500 - 2.000

526

**Richard Döcker
Library clip-on light, 1953**

H. 75 x 90.5 cm. Tubular metal, sheet metal, painted blue on the outside, white on the inside.
€ 1.200 - 1.500



522

522

**Jürg Bally
'S.T.-Tisch' coffee table, 1954**

H. 40-70 cm, Ø 100 cm. Made by Wohnhilfe, Zurich. Maple, maple veneer, tubular brass, sheet brass.
Rüegg (Ed.), Schweizer Möbel und Interieurs, Basel 2002, p. 199.
€ 1.800 - 2.000



525



526

527



527

Arne Jacobsen

6 'Seagull' - '3208' chairs, 1955

H. 75.5 x 49 x 49.5 cm. Made by Fritz Hansen, Allerød. Tubular metal, chrome-plated, plywood with teak veneer, colorless lacquer. Marked: manufacturer's stamp with designer information.

Stackable.

Hansen / Petersen, Den Store Danske Møbelguide, np 2005, p. 131.

€ 2.500 - 3.000

528

George Nelson

'Modular Seating Unit' sofa for two with table, 1955

H. 74 x 181.5 x 76 cm. Made by Herman Miller, Zeeland. Square steel tube, painted white, brown textile cover, plywood with white formica, wood, stained black.

Vege sack (Ed.), George Nelson, Weil / Rhine 2008, p. 267.

€ 1.800 - 2.200



528

529

George Nelson

'Modular Seating Unit' sofa for three, 1955

H. 74 x 181.5 x 76 cm. Made by Herman Miller, Zeeland. Square steel tube, painted white, brown textile cover, wood, stained black.

Vege sack (Ed.), George Nelson, Weil / Rhine 2008, p. 267.

€ 2.000 - 2.300



529

530

Frankreich
2 chairs, c. 1955

H. 80 x 49 x 51 cm. Tubular metal, chrome-plated, plastic seat shells, reinforced with fiberglass, red and yellow.

Image online.

€ 400 - 500

531

Sweden
'Rya' carpet, c. 1958

Sweden. 'Rya' carpet, c. 1958. 180 x 244 cm. Polychromatic wool, hand-woven.

€ 800 - 900

532

Paul McCobb
'Origami' side chair, 1950s

H. 79.5 x 52.5 x 58.5 cm. Made by St. John Seating Co., New York. Blue-gray plastic, reinforced with fiberglass, tubular metal, chrome plated. Marked: Manufacturer's label.

€ 1.200 - 1.500

533

Gerald Summers (style)
Coffee table, 1950s

H. 44 x 120 x 80 cm. Plywood with birch and curly birch veneer.

€ 600 - 700

534

Sori Yanagi
2 'Butterfly' stools, 1956

H. 39 x 44 x 30 cm. Made by Vitra Design, Weil / Rhine. Plywood, stained dark brown, tubular brass. Fiell, 1000 Chairs, Cologne 1997, p. 327; Antonelli, Design - Die Sammlung des Museum of Modern Art, New York 2003, p. 138.

Image online.

€ 500 - 700

535

Curt Fischer; Wolfgang Fischer
'Midgard' wall light, 1950s

L. 94 cm, Ø 16.5 cm. Made by Industrial works Auma; Ronneberger & Fischer. Tubular metal, painted black, sheet metal. Marked: manufacturer's label Midgard, additional label BA 700 TGL 22864.

Image online.

€ 350 - 400



532



531



533



536

**Hugues Steiner (attributed)
Two 'Bow.wood' armchairs, 1950s**

H. 78 x 55 x 58 cm. Made by Steiner Meubles, Paris (attributed). Ash wood, curved, sand-colored leather.

Cf. Favardin, Steiner, Paris 2007, p. 38ff.

€ 900 - 1.200

537

**ILSE-Möbel, Uslar
Coffee table, 1950s**

H. 59.5 x 138 x 60 cm. Walnut, green-black marble, sheet brass. Marked: manufacturer's sticker.

€ 900 - 1.000

538

**Arne Jacobsen
'AJ' ceiling light, c. 1956**

H. 16 cm, Ø 37 cm. Made by Louis Poulsen, Copenhagen. Aluminum sheet, varnished gray, Plexiglas.

Thau / Vindum, Arne Jacobsen, Copenhagen 2001, p. 473.

Image online.

€ 150 - 200

539

**Arne Jacobsen
'AJ' wall light, 1957**

H. 24 x 11.5 x 16.5 cm. Made by Louis Poulsen, Copenhagen. Sheet metal, tubular metal, matt chrome-plated. Marked: manufacturer's sticker.

Thau / Vindum, Arne Jacobsen, Copenhagen 2001, p. 475.

Image online.

€ 500 - 600

540

**Netherlands
Side table, c. 1957**

H. 43 x 65 x 30 cm. Oak wood. Marked: manufacturer's branding Disterwijk (indistinct).

Image online.

€ 350 - 400



537

541

**Rupert Nikoll, Vienna (attr.)
2 floor lamps, 1950s**

H. 147 cm, Ø 41 cm. Tubular brass, wickerwork, orange-red textile.

€ 900 - 1.200

542

**Carl Sasse, Casala, Lauenau (attr.)
2 armchairs, c. 1955**

H. 85 x 56.5 x 60 cm. Elm wood, patterned textile cover. Marked: Inventory plaque SWDR 31201.

Image online.

€ 550 - 600

543

**Børge Mogensen
2 sideboards, c. 1958**

H. 87 x 100 x 48.5 cm. Made by Søborg Møbler, Søborg. Teak, wooden box construction, blockboard with teak veneer. Marked: manufacturer's stamp.

€ 1.200 - 1.800

544

**Arco, Germany
Rocking recliner, 1950s**

H. 90 x 70 x 170 cm. Bamboo cane, rattan, beechwood. Marked: Manufacturer's badge.

Image online.
€ 700 - 800



543



545

France
2 armchairs, c. 1958

H. 77 x 71 x 64 cm. Beech wood, stained dark, rattan wickerwork.
€ 600 - 700



541

546

Louis Paolozzi
4 chairs, c. 1958

H. 78.5 x 50 x 47 cm. Made by Zol, France. Tubular metal, painted black, plywood, painted black, black leather.
€ 1.200 - 1.800



545



546



547

547
France
Trolley, c. 1958

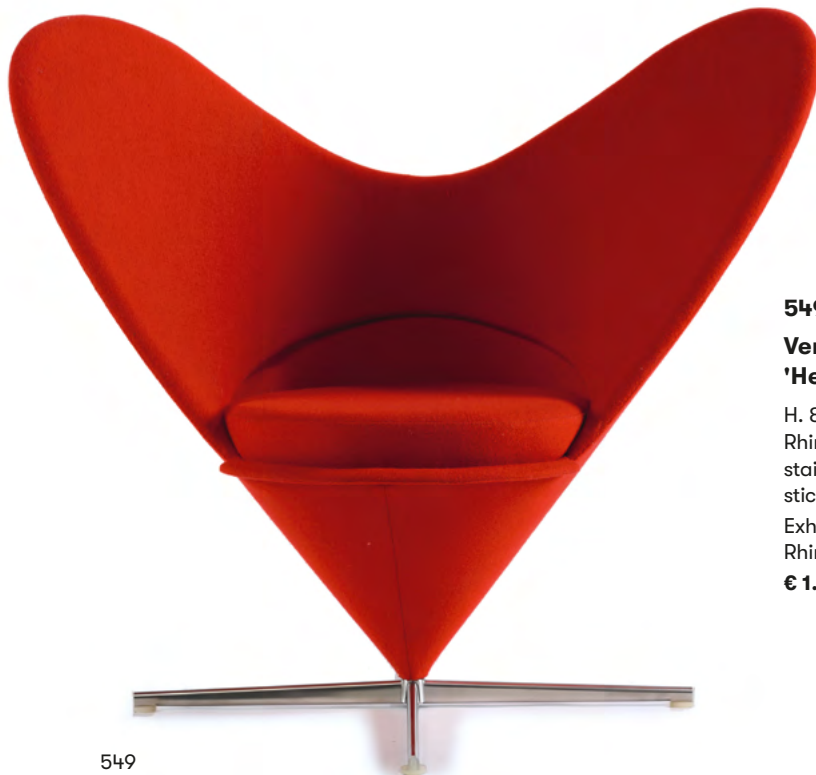
H. 81.5 x 107 x 46 cm. Tubular brass, sheet metal, painted red, glass, wood, casters.
€ 1.500 - 1.800



548

548
Mathieu Matégot (attr.)
Coffee table, c. 1958

H. 51 x 101 x 61 cm. Made by Artimeta, Soest (attr.). Metal rods, sheet metal, painted black, perforated sheet, enameled white, black, blue, yellow and red.
€ 1.600 - 2.000



549

549
Verner Panton
'Heart Cone Chair', 1959

H. 88 x 100 x 57 cm. Made by Vitra Design, Weil / Rhine, c. 2002. Glass fiber reinforced plastic, brushed stainless steel, red fabric. Marked: manufacturer's sticker.
 Exh. cat. Verner Panton, Vitra Design Museum, Weil / Rhine 2000, p. 242.
€ 1.200 - 1.500

550

**Hans J. Wegner
2 armchairs 'Kastrop' - 'AP-39', 1959**

H. 77.5 x 60.5 x 68.5 cm. Made by AP-Møbler, Copenhagen. Tubular steel, nickel-plated, orange-yellow striped textile cover.

Exh. poster Hans J. Wegner, The Danish Design Center, Copenhagen- Living Design Center OZONE, Tokyo 1995; cf. Holmsted Olesen, Wegner, Ostfildern 2014, p. 212.

€ 350 - 400



550



551

551

**Uli Wieser
'WI 1035' dining table, 1959**

H. 73 x 146/212 x 90 cm. Made by Bofinger, Illfeld or Wohnbedarf, Zurich. Square metal tube and L-profiles, painted black, plywood, formica, white.

Including: plate for extension (66 x 90 cm). Cf. Sembach, Neue Möbel, Stuttgart 1982, p. 181.

€ 1.500 - 1.800

552

**Fagerhults Ljusarmatur, Fagerhult
Floor lamp, c. 1959**

H. 134 cm, Ø 41 cm. Brass tube, brass sheet, textile cover, white.

Image online.

€ 400 - 500

553

**Vereinigte Werkstätten, Munich
2 table lights, 1950s**

H. 46.7 cm, Ø 40.5 cm. Sheet brass, partially cream-colored.

€ 600 - 700



553

554

**Wilhelm Wagenfeld
'111' vase, 1938**

H. 15.5 cm. Made by Vereinigte Lausitzer
Glaswerke, Weisswasser. Tourmaline green
glass.

Image online.

€ 350 - 400

555

**Tapio Wirkkala
'Leaf' - '3372' bowl, 1954 and 3
'3268' ashtrays, 1948**

H. 2.7 x 8.9 x 7.7 cm - H. 3.3 x 9 x 7.8 cm; H.
5 x 23.5 x 19.5 cm. Made by Iittala, Kalvo-
la. Glass, clear, cut. Marked: T. WIRKKALA
IITTALA FINLANDE or TAPIO WIRKKALA -
IITTALA, resp. (diamond-cut).

Exh. cat. Tapio Wirkkala, Museum of Art and
Design Helsinki, Porvoo 2000, p. 296.

€ 700 - 900

556

**Vicke Lindstrand
Vase, c. 1952**

H. 32.4 cm. Made by Kosta Boda. Overlaid
glass, colorless and purple. Marked: LIND-
STRAND KOSTA in a square (etched stamp),
LH1130 HD 88 (incised).

€ 900 - 1.200



557

**Timo Sarpaneva
'Bird's Head' - '3866' vase, 1953**

H. 22 cm. Made by Iittala, Kalvola, 1956.
Clear overlaid glass. Marked: TIMO SARPA-
NEVA - IITTALA - 56 (diamond cut).

Exh.-Cat. Timo Sarpaneva, Design Museo,
Helsinki 2002, p. 43f.

€ 600 - 700

558

**Tapio Wirkkala
'Tokyo' - '3576' vase, 1954**

H. 18.5 cm. Made by Iittala, Kalvola. Clear
overlaid glass. Marked: TAPIO WIRKKALA
IITTALA 3576 (diamond cut).

Exh. cat. Tapio Wirkkala, Museum of Art and
Design Helsinki, Porvoo 2000, p. 304.

€ 1.000 - 1.400





558



559

559

**Tapio Wirkkala
'Leaf' - '3372' bowl, 1954**

H. 5.2 x 25 x 20.5 cm. Made by Iittala, Kalvola, 1955. Glass, clear, cut. Marked: TAPIO WIRKKALA IITTALA - 55 (diamond cut). Exh. cat. Tapio Wirkkala, Museum of Art and Design Helsinki, Porvoo 2000, p. 303.
€ 600 - 800

560

**Wilhelm Braun-Feldweg
'Kalabasse' vase, 1954/55**

H. 57 cm. Made by Hirschberg crystal glass factory. Blue glass. Exh. cat. Braun-Feldweg, Badisches Landesmuseum Karlsruhe, Karlsruhe 1984, p. 46, no. 31. Image online.
€ 400 - 600

561

**Nanny Still-McKinney
Bottle, c. 1958**

H. 34.1 cm. Made by Riihimäen Lasi Oy. Glass, purple. Marked: RIIHIMÄEN LASI OY NANNY STILL (diamond-cut). Image online.
€ 400 - 500

562

**Pavel Hlava
Vase, 1959**

H. 36 cm. Glass, colorless, red and yellow, with four punctures opposite each other. Cf. Cat. Pavel Hlava, Prague 1995, p. 13.
€ 700 - 800

563

**Karl Wiedmann
'Spun Vase', 1969**

H. 20.3 cm. Made by Gralglas hut, Dürna. Overlaid glass, intercalaire decor with stripes, warped, violet powder melts, matted and partially iridescent. Image online.
€ 150 - 250

564

**Rosenthal, Selb
Vase, 1970s**

H. 15 cm. Overlaid glass, colorless and matt. Marked: Rosenthal studio linie (sandblasted). Image online.
€ 400 - 600



562

554

555

556



566

565
**Marguerite Friedlaender-
 Wildenhain; Trude Petri**
'Halle' cup and saucer, 1929/30

H. 5.5 cm. Made by StPM Berlin, 1933. Porcelain, white, glazed, 'Goldring' decor. Marked: scepter (blue, under glaze), imperial orb (red, on glaze), Pr. 1617, painter's mark (probably Erich Schulz), additional mark (red, handwritten), date letter for 1933, shape mark (embossed).

Bröhan-Museum Berlin, Berliner Porzellan vom Jugendstil zum Funktionalismus, Berlin 1997, p. 197.

Image online.

€ 200 - 300

566
Arthur Andersson
20 miniature vases, 1950s

H. 4.2-10.7 cm. Made by Wallåkra, Northwest Skåne. Earthenware, glazed in various shades of brown. Marked: W or V: kra (incised), WALLAKRA (embossed).

€ 800 - 1.000



570



568

567
Hubert Griemert
'Piston Shaped' vase, 1953

H. 42 cm. Made by StPM Berlin. Porcelain, white, glazed, cobalt blue underglaze. Marked: scepter, orb (blue, under glaze).

Image online.

€ 700 - 900

568
Jacques Ruelland; Dani Ruelland
Bowl, c. 1955

H. 6.5 x 55 x 12.7 cm. Earthenware, glazed matt yellow and black on gray. Marked: J. Ruelland (black, handwritten).

€ 900 - 1.000

569
Van de Buren
Decorative 'Haiti' plate, 1959

Ø 37.3 cm. Majolica, incised pattern with figurines, polychromatic glaze. Marked: HAITI 59 V. DE BUREN.

Image online.

€ 100 - 150

570
Jacques Ruelland; Dani Ruelland
Small vase, c. 1960

H. 10.5 cm. Earthenware, glazed gray. Marked: Ruelland (incised).

€ 1.100 - 1.300



572

571

Otmar Alt
'Flash - Funny People' dinnerware set, 1960s

29 pieces: 8 plates Ø 28 cm; 7 bowls Ø 22 cm; 4 plates Ø 20 cm; 7 cups with saucers Ø 15 cm, H. 6 cm, 2 cups, a salt shaker Ø 6.5 cm. Made by Rosenthal, Selb. Porcelain, white, polychrome lithograph. Marked: manufacturer's mark, facsimile signature. Two saucers are lost.
Image online.

€ 200 - 250

572

Curt Magnus Addin
8 vases, 1970s

H. 10-29.7 cm. Earthenware, partially glazed. Marked: curt m. addin glumslöv, sweden (embossed), signet CMA (handwritten).

€ 2.000 - 3.000

573

Dieter Krumbiegel
Vase, 1973

H. 19.5 cm. Stoneware, glazed matt brown and blue. Marked: workshop signet, 73 (incised).

€ 900 - 1.200

574

Timo Sarpaneva; Victor Vasarely
'Suomi' coffee pot, 1976

H. 20 cm (with handle). Made by Rosenthal, Selb. Porcelain, white, glazed, polychrome overglaze, metal handles. Marked: Facsimile signature Vasarely, Rosenthal, galerie 500/21 (gold).

With certificate.

Exh. cat. Rosenthal. Hundert Jahre Porzellan, Kestner Museum Hannover 1982, p. 117 (Form).

Image online.

€ 350 - 450

575

Bořek Šípek
'Albertine' tableware from the 'Folies' series, 1989

15 pieces. Coffee cup, soup plate, dinner plate, dessert plate, dessert plate, egg cup. H. 10 cm; Ø 11.2-34.3 cm. Made by Porcelayne Fles, Delft for Driade, Caorso. Porcelain, white, glazed, gold-plated edges, small gold plates. Marked: driade (gold stamp).

Exh. cat. Borek Sipek, Steltman Galerie & Editions, Prague 1993, p. 158.

Image online.

€ 600 - 800



573

576

George J. Sowden
'Red' prototype vase from the 'RED-YELLOWBLACK' series, 2006

H. 51.2 cm. Made by Superego, Milan. Earthenware, polychrome glaze. Marked: GEORGE J. SOWDEN MADE IN ITALY PROTOTIPO ABITARE IL TEMPO VERONA 2006, SUPEREGO editions.

€ 800 - 1.000

577

George J. Sowden
'Yellow' vase from the 'RED-YELLOWBLACK' series, 2006

H. 56.5 cm. Made by Superego, Milan. Earthenware, polychrome glaze. Marked: GEORGE J. SOWDEN MADE IN ITALY, no. 2/50, SUPEREGO editions.

From the pre-production series.

€ 800 - 1.000



576



577

565

566

567



579

578

**Bauhaus (Surroundings)
Candlestick, c. 1925**

H. 9 cm. Sheet metal, silver-plated, punched decor. Marked: GERMANY (embossed).

Image online.

€ 350 - 550

579

**Marianne Brandt
Table sweeping set, 1929-32**

Broom: 8.7 x 11.5 cm; Shovel: 11.7 x 14.5 cm. Made by Ruppelwerk, Gotha. Sheet brass, wood, painted black, natural bristles. Marked: remains of a RUPPEL stamp.

With: Ruppel sweeping set, before 1929: 7 x 11.5 cm and 18.4 x 15.9 cm. Sheet metal, painted black, wood, painted red, natural bristles or sheet metal, painted cream white with purple flower decoration. Not signed.

€ 350 - 500



580

580

**Orfèvrerie d'Ercuis, Ercuis, Oise
Champagne cooler, c. 1930**

H. 20.1 cm. Nickel silver, silver-plated. Marked: 67, ERCUIS, workshop mark, 35 (embossed).

€ 900 - 1.200

581

**Vienna
Sailboat, 1950s**

H. 29 cm. Brass, copper-plated.

€ 400 - 500



581

582

Zeppelin works, Friedrichshafen

Bowl, c. 1935

30.3 x 17 cm. Aluminum sheet, rattan wickerwork, blackened.

Marked: Zeppelin signet, ZEPPELIN (embossed).

€ 450 - 500



582

583

Mathieu Matégot (attr.)

Tray, 1949/50

H. 6.2 x 53 x 28.2 cm. Made by Artimeta, Soest (attr.). Sheet metal, perforated, painted yellow, white rubber feet.

Cf. Jousse / Mondineu, Mathieu Mategot, Paris 2003, No. 20.

Image online.

€ 250 - 300

584

WMF, Geislingen

2 champagne coolers, 1953

H. 22 cm, Ø 21 cm. Silver-plated nickel silver. Marked: Manufacturer's mark.

Altgeld-Peters, WMF, Bd. 1, Berlin 2000, p. 484.

€ 500 - 600



584

585

Tapio Wirkkala

'TW 85' bowl, 1955

H. 9 x 35.5 x 10 cm. Made by Kultakeskus Oy, Hämeenlinna, 1960. Silver, teak. Marked: TW, lying lion, crown, 916H, city mark, G7, additional marks (embossed).

Exh.-Cat. Tapio Wirkkala, Museum of Art and Design Helsinki, Porvoo 2000, p. 362.

€ 500 - 600



585

586

Christofle, Paris

Champagne cooler, c. 1960

H. 21.3 cm. Metal, silver-plated, dark patina. Marked: Libra, CHRISTOFLE FRANCE, knight (embossed).

Image online.

€ 400 - 500

587

Rudolf Steiner (surroundings)

2 anthroposophical bookends, 1930-50

H. 12.4 x 11.2 x 15.2 cm; H. 12.5 x 11.2 x 15.2 cm. Oak wood, carved.

€ 300 - 400

588

Rudolf Steiner (Surroundings)

Anthroposophical pen tray, 1930-50

9.5 x 28.7 cm. Oak wood, carved.

Image online.

€ 200 - 250



587



590

589

**Finland
'Funkis' rug, 1920s/30s**

239 x 382 cm. Woven wool and cotton, shades of brown.

Image online.

€ 300 - 500

590

**Scandinavia
Rug, c. 1925**

122.5 x 193.5 cm. Wool on cotton, woven, in shades of brown and orange. Marked: JK (woven in).

€ 1.000 - 1.500

591

**Eileen Gray
'Centimètre' rug, 1922/23**

228 x 248 cm. Made by Ecart International, Paris (attr.). Pure new wool, black and white.

Garner, Eileen Gray, Cologne 1993, p. 134.

€ 1.800 - 2.200



591

592

**Scandinavia
Carpet, 1930s/40s**

181 x 290 cm. Wool, green, red, orange, brown, linen. Back with wear protection layer made of flax.

€ 600 - 700

593

**Gunta Stölzl (style)
Rug, c. 1930**

125 x 54 cm. Wool and cotton, woven, orange and red.

Cf. Wortmann Weltge, bauhaus-textilien, Schaffhausen 1993, p. 82; cf. Wichmann, Von Morris bis Memphis, Textilien der Neue Sammlung, Basel 1990, pp. 190-193.

Image online.

€ 700 - 900

594

**Ingegerd Silow
Rölakan rug, c. 1950**

226 x 140 cm. Wool, handwoven, yellow and brown. Marked: IS (woven in).

Image online.

€ 500 - 600



592

595

**The Netherlands (attr.)
Tapestry, 1950s**

69.5 x 124 cm. Wool, white, brown and orange, hand-knotted.

Image online.

€ 400 - 500

596

**Sweden
Rug, 1950s**

310 x 190 cm. Cotton and wool, woven, predominantly gray. Labeled: weaver's signet (woven in, unknown).

Image online.

€ 600 - 700

597

**Sweden
Rölakan rug, 1950s**

200 x 309 cm. Woven wool and cotton, earth tones. Marked: SG (woven in).

Image online.

€ 300 - 500

598

**Jean Lurçat
Tapestry, 1950s**

173 x 122.5 cm. Printed cotton. Signed: Lurçat.

Image online.

€ 200 - 250

599

**Germany
Rug, 1970s**

250 x 70 cm. Wool, deep pile, multicolored.

Image online.

€ 350 - 400

600

**Edith Müller-Ortloff
Tapestry 'David sings to God', 1970s**

140 x 95 cm. Made by Neues Schloss, Meersburg. High-pile polychrome wool and cotton, knotted, tufted. Marked: manufacturer's label.

With: Georgi, tapestries: Edith Müller-Ortloff, Aachen nd (1970), exh.-cat. Edith Müller-Ortloff, Constance 1986.

Exh. cat. Edith Müller-Ortloff, Konstanz 1986, p. 90.

Image online.

€ 600 - 700



601

601

**Andrée Putman
Rug, 1980s**

Ø 240 cm. Made by Gérard Toulemonde Bochart, Paris. Wool, black, white and gray. Marked: manufacturer's label.

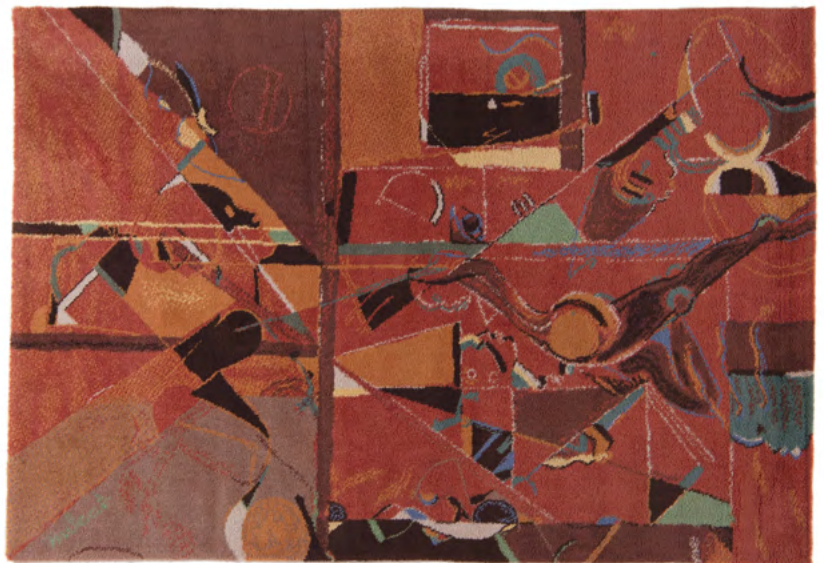
€ 2.000 - 3.000

602

**Miles Davis
'Miles Beyond' rug, 1988**

140 x 200 cm. Made by Ege Axminster A / S, Denmark, 1995. Wool, deep pile, predominantly brown and red tones. Marked: Miles, manufacturer's label, No. 251.

€ 900 - 1.000



602



603
Peter Behrens (attr.)
Fan, c. 1908

H. 42.5 cm, Ø 33.5 cm. Made by AEG, Berlin. Tombac, painted black, aluminum, metal wire. Marked: manufacturer's badge.
€ 700 - 800

604
Oswald Pontius (attr.)
Elephant, 1914-20

H. 21.5 x 37 x 9 cm. Made by Zoo workshops, Munich. Oak wood, carved, polychrome paint. Image online.
€ 300 - 400



605
France (attr.)
Folding ladder, 1920 / 30s

H. 124 cm (open) x 50.5 x 82.5 cm. Sheet metal, metal profiles, wooden steps. Image online.
€ 450 - 500

606
Marcel Breuer
Illuminated shaving mirror, c. 1930

H. 17.5 cm, Ø 20.5 cm. Made by Zeiss-Ikon AG, Berlin. Chromed sheet metal, mirror glass, frosted glass. Marked: ZEISS IKON. Shaving mirror probably for an apartment 'for a childless couple' presented by Marcel Breuer at the Werkbund exhibition as part of the Salon of the Société des artistes décorateurs français in Paris in 1930. Cf. Nerdinger et al., 100 years of the German Werkbund, Munich 2007, p. 149 (text). Image online.
€ 400 - 600

607
Germany
Wall sculpture 'Falada', 1930s

H. 58 x 25 x 19 cm. Oak wood, carved, stained dark.
€ 700 - 800



608
Kasimir Malewitsch (after)
'Sportsman', 1931

H. 146 cm. Made by SRGF (Salomon R. Guggenheim Foundation), USA, c. 1996. Paper maché. Marked: Guggenheim Museum 1996 SRGF (Salomon R. Guggenheim Foundation). Acquired by the consignor at the Guggenheim Museum New York, c. 1996.
€ 1.500 - 2.000

609
Ernst Fischer
'Freia' sewing machine in a case, 1949

H. 8.3 x 43.5 x 30 cm (closed); H. 28 x 85 x 30 cm (open). Made by VEB MEWA Ernst-Thälmann-Werk, Suhle. Red-brown thermoset, metal. Marked: FREIA. Höhne, Penti, Erika and Bebo Sher, Berlin 2002, p. 146f. Image online.
€ 200 - 300



610

610

Vienna

2 umbrella stands, 1950s

H. 40.5-48.5 x 24.5-38 x 21.5-24.5 cm. Tubular brass, bamboo, cast metal. Marked: EH (embossed, 1x).

€ 600 - 700

611

Carl Auböck

Magazine rack, c. 1955

H. 38 x 42 x 30.5 cm. Metal rods, painted black, teak.

€ 700 - 800

612

Folke Arström

'Focus De Luxe' cutlery, 1956

65 pieces. 8 dining spoons, 6 dessert spoons, 5 coffee spoons, 4 mocha spoons, 8 dining forks, 6 starter forks, 6 cake forks, 9 knives, 6 starter knives, 6 fruit knives, sauce spoon. L. 12.9-19.8 cm. Made by Gense Guldsmeds Share Bolaget (GAB), Eskilstuna. Stainless steel, black nylon. Designation: GENSE 18-8 STAINLESS SWEDEN or GENSE EXTRA STAINLESS SWEDEN (embossed).

Bauer, European Cutlery Design, Stuttgart nd, p. 76.

Image online.

€ 400 - 500

613

Netherlands

Stool, c. 1959

H. 47.5 cm, Ø 38 cm. Metal rods, painted black, cane-work.

Image online.

€ 300 - 350



611

614

Max Bill

'Electora' wall clock, 1961

H. 21 x 21 x 6.5 cm. Made by Junghans, Schramberg. Walnut, sheet brass, glass. Marked: JUNGHANS, MADE IN GERMANY.

Battery-driven.

Junghans Brochure 1961 at www.junghans-vintage.de.

€ 600 - 700



614



615

Walter Zeischegg
10 'Sinus' ashtrays, 1966/67

H. 5 cm, Ø 13 cm. Made by Helit, Kierspe. Plastic, multicolored. Marked: manufacturer's stamp (embossed).

Exh. cat. Plastics + Design, Neue Sammlung Munich, Munich 1997, p. 93.

Image online.

€ 350 - 400

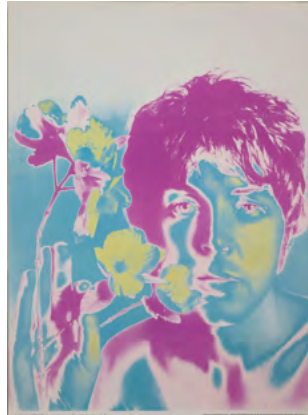
616

Richard Avedon
5 'Beatles' posters, 1967

Offset print on paper. 68.5 x 47.6 cm; 36.2 x 101.2 cm.

Marked: Künstler fotografiert von Richard Avedon für Stern, Copyright für Deutschland bei Populäre Propaganda Presse, Düsseldorf, printers. Printed by Waterlow & Sons Ltd.

€ 900 - 1.200



616

617

Holger Bäckström; Bo Ljungberg
'Ultima 30' ashtray, around 1970

H. 6 x 30 x 30 cm. Made by Pascha AB, Lund. Chrome-plated aluminum. Marked: Manufacturer and designer's info (embossed).

Homo, La Côte du design, Rouen, 2012, p. 47.

Image online.

€ 80 - 120

618

Paco Rabanne
Room divider / wall hanging, around 1970

12 strands: H. 197 x 13 cm; Overall dimensions with suspension: H. 206 x 162 cm. Metal plates, white plastic rails.

€ 1.500 - 2.500

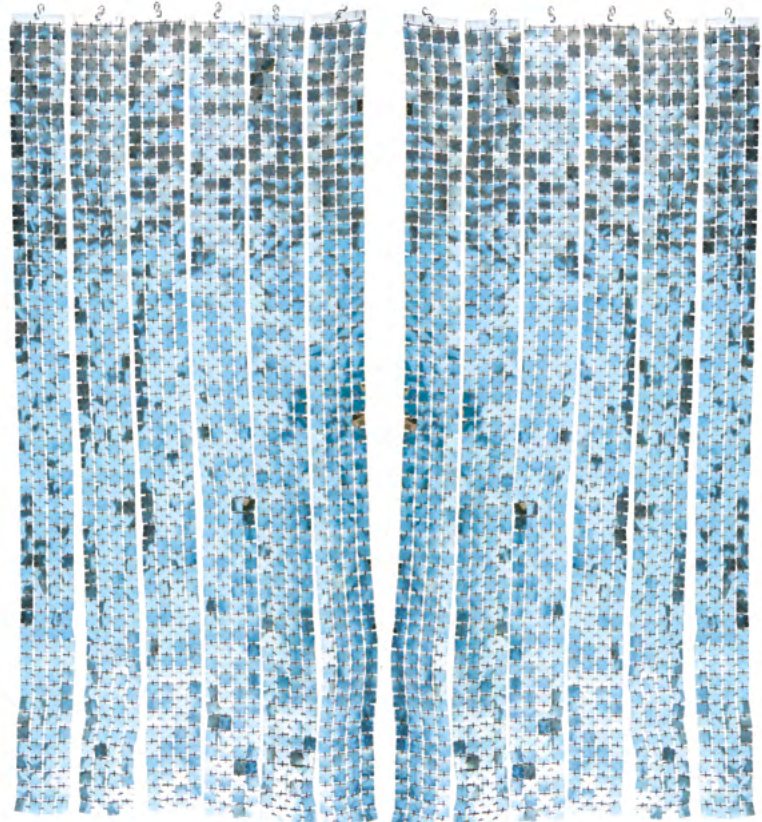
619

Denmark (attr.)
Iron sculpture / stele, 1970 / 80s

H. 131 x 30 x 30 cm. Cast concrete, iron plates, welded.

Image online.

€ 400 - 500



618

620

**Renate Müller
Seal, 1971**

H. 52 x 52,5 x 60 cm. Made by Renate Müller, Sonneberg, c. 1993. Burlap, blue and red leather. Marked: Manufacturer's hanging label.

Exh. cat. Renate Müller Spielzeug + Design, Deutsches Spielzeugmuseum, Sonneberg 1996, p. 22f.

€ 800 - 900



620

621

**Renate Müller
Whale, 1972**

H. 51 x 52 x 58 cm. Made by Renate Müller, Sonneberg, c. 1993. Burlap, blue and red leather. Marked: Manufacturer's hanging label.

Exh. Renate Müller Spielzeug + Design, Deutsches Spielzeugmuseum, Sonneberg 1996, p. 28f.

€ 900 - 1.200



621

622

**Otl Aicher
2 'Frankfurt Airport' enamel signs, c. 1972**

H. 54 x 54 x 2.8 cm. Sheet metal, enameled red, black and white or blue and white.

Image online.

€ 400 - 500

623

**Adolf Babel
'Tumppi' cutlery, 1975**

46 pieces. 12 spoons, 12 forks, 10 knives, 12 coffee spoons. L. 15-19 cm. Made by Hackman Oy, Helsinki. Stainless steel, black nylon. Marked: HACKMAN FINLAND 18/8 (embossed).

Partially clear signs of wear, especially on one coffee spoon.

Bauer, European Cutlery Design, Stuttgart nd, p. 133.

Image online.

€ 200 - 300

624

**Eva Moritz; Peter Moritz
2 'Globular' sculptures, 1980s**

H. 19 x 35.5 x 13.5 cm. Made by Ikea, Ålmhult. Aluminum. Marked: manufacturer's label with facsimile signature.

Image online.

€ 300 - 400

625

**Diesel
'Cactus', 1990s**

H. 199 x 60 x 34 cm. Tubular metal, chrome-plated, sheet metal, painted gray. Marked: manufacturer's mark.

Image online.

€ 500 - 600

626

**Olaf Gerlach
'Documenta IX' wristwatch, 1992**

L. 23 cm. Made by Movado, Switzerland. Black lizard leather, gold-plated metal, glass. Decor with two swans. Marked: DOCUMENTA IX, Kassel 1992, SWISS MOVADO QUARTZ. Back: DOCUMENTA IX, 87-45-882, 1609624, 31/40, WATER RESISTANT.

Battery driven. The number 31 from an edition of 40 pieces in 1996. In the original leather case and original box with guarantee booklet. Provenance: Hufnagl Collection, bought in 1996.

Image online.

€ 300 - 400

627

**Christian Liaigre
'Septlune' lantern, 2000s**

H. 39 cm, Ø 24 cm. Made by Christian Liaigre, Paris. Sheet metal, painted gray, clear glass.

Image online.

€ 300 - 400

628

**Markus Heckenhausen; Reinhard Zetsche
'Flowerpower' pedestal fan, 2001**

H. 153 x 44 x 37 cm. Made by Authentics GmbH, Gütersloh. Tubular metal, painted gray, PU foam, red, plastic, gray.

Marked: manufacturer's sticker.

Image online.

€ 200 - 250

629

**Arkana, England
Side table, c. 1960**

H. 51.5 cm, Ø 75.5 cm. Cast aluminum, lacquered white, plywood top, laminated white. Marked: Arkana, 4 (embossed).

Image online.

€ 200 - 250

630

**Hans-Agne Jakobsson
'S-1871' floor lamp, c. 1960**

H. 145 cm, Ø 35 cm. Made by Hans-Agne Jakobsson AB, Markaryd. Tubular brass, sheet brass, partially painted blue, textile shade, white. Marked: Hans-A. Jakobsson, Åhus, NR S-1871.

Lampshade replaced.

Image online.

€ 400 - 500

631

**Úluv, Bratislava, Tschechoslowakei
Ceiling light, 1960s**

H. 44 cm, Ø 24 cm. Glass, white, beech wood. Marked: manufacturer's stamp.

Image online.

€ 450 - 500



632

632

**Florence Knoll
'2480' table, c. 1960**

H. 76.5 x 246 x 110 cm. Made by Knoll International, New York. Tubular metal, sheet metal, chrome-plated, metal support, painted black, table top with teak veneer.

Price list for the Knoll International catalog, 1965, p. 68.

€ 1.500 - 1.800

633

**Charles Eames
'Plastic Armchair' on 'LaFonda base', c. 1961**

H. 82 x 64.5 x 58 cm. Made by Herman Miller, Zeeland or Vitra Design, Weil / Rhine. Fiberglass-reinforced plastic, cream white, cast aluminum, chrome-plated, rubber, black.

Neuhart/Eames, Eames Design, New York 1994, p. 253.

€ 500 - 600



633



635

634

Germany

Collector's cabinet, 1960s

H. 77 x 64.5 x 21 cm. Wooden box construction, oakwood, oak veneer.

Image online.

€ 400 - 450

635

**Hans-Agne Jakobsson
7 pendant lights, 1960s**

H. 18 cm, Ø 11.5 cm. Made by Hans-Agne Jakobsson AB, Markaryd. Sheet brass, tubular brass.

€ 800 - 900



636

636

**Hans-Agne Jakobsson
2 ceiling lights, c. 1960**

H. 33 cm, Ø 28 cm (without suspension). Made by Hans Agne Jakobsson AB, Markaryd. Sheet brass, partially white, fabric threads.

€ 800 - 900

637

**WK-Möbel, Stuttgart (attributed)
Serving trolley, 1960s**

H. 73 x 85 x 47 cm. Tubular brass, sheet brass, partially painted white, plywood with walnut veneer, rubber, white.

€ 500 - 700

638

**Bergboms, Malmö
Floor lamp, 1960s**

H. 132 cm, Ø 42 cm. Tubular brass, textile cover, white, cast iron base, blackened.

Image online.

€ 400 - 500

639

**Tomado, The Netherlands.
'Tomado' shelf-system for wall fastening, 1960s**

Three ladders, six storage compartments. H. 68.8; Storage compartments: Three pieces: 65 x 19 cm; Three pieces: 38 x 19 cm. Metal rods painted white, sheet metal, blue, grey, green. Marked: manufacturer stamp.

The photo is for illustrative purposes only.

Image online.

€ 400 - 450

640

**Rosemarie Baltensweiler; Rico Baltensweiler
'Minilux' table light, 1960s**

H. 46 cm. Made by Baltensweiler AG, Ebikon. Aluminum sheet, painted black, tubular metal, metal sheet, chrome-plated, cast iron, blackened.

Image online.

€ 250 - 350



637



641

641

Harry Bertoia
2 '428' barstools, c. 1962

H. 104 x 53 x 57 cm. Made by Knoll International, New York.
 Metal rods, metal wire, chrome-plated.
 Rouland, Knoll Furniture, Atglen 1999, p. 62.
€ 800 - 900

642

Jo Hammerborg
'Orient' pendant light, 1963

H. 24.5 cm. Made by Fog & Mørup, Copenhagen. Sheet metal, copper-plated, teak.
www.danish-lights.com
 Image online.
€ 500 - 600

643

Trix Haussmann; Robert Haussmann
Five 'Stollenstühle', a stool, 1963

Chairs: H. 75 x 47 x 47 cm; Stool: H. 45 x 47 x 45 cm. Made by Dietiker AG, Stein am Rhein. Oak wood, transparent lacquer, paper cord mesh.
 Expo Lausanne 1964.
€ 500 - 700



644

644

Eero Aarnio
'Ball chair', 1963-65

H. 121 cm, Ø 110 cm. Made by Adelta Oy, Helsinki. Plastic, reinforced with Fiberglas, lacquered white, tubular steel, red fabric. Marked: Maker's label.
 Hai, Eero Aarnio, Nanjing 2013, p. 49.
€ 1.800 - 2.500



643

645

Bergboms, Malmö
2 table lights, 1960s

H. 60 cm, Ø 30 cm. Sheet brass, tubular brass, black textile shades, gold coloured on the inside.

Image online.

€ 400 - 500

646

J. T. Kalmar, Vienna
2 floor lamps, c. 1960

H. 160 cm, Ø 50 cm. Metal frame, tubular metal, sheet brass, leather cover, cream white shade.

€ 2.000 - 2.500

647

J. T. Kalmar, Vienna
2 table lights, c. 1960

H. 51 cm, Ø 35.5 cm. Cast iron, sheet brass, tubular brass, dark brown leather, fabric shades.

€ 1.500 - 1.800

648

Denmark (attr.)
2 table lights, c. 1960

H. 76-79 cm, Ø 60 cm. Majolica, brown glaze, fluted, black and red paper shades.

Shades replaced; height adjustable.

Image online.

€ 400 - 500

649

Hans-Agne Jakobsson
2 wall lights, 1960s

H. 17.5 x 7.5 x 16.5 cm. Made by Hans-Agne Jakobsson AB, Markaryd. Sheet brass, tubular brass, glass, purple. Marked: Manufacturer's sticker.

Image online.

€ 300 - 400

650

Holmegaard, Copenhagen (attr.)
2 table lights, 1960s

H. 37 x 9 x 6.5 cm. Overlaid glass, colorless and dark red, sheet brass, nickel-plated. Marked: remains of a label (1x).

Image online.

€ 200 - 300





651

651

**Fagerhults Ljusarmatur, Fagerhult
2 ceiling lights, 1960s**

Ø 65 cm. Made by Fagerhults Ljusarmatur, Fagerhult. Sheet metal, painted white, nylon cords. Marked: manufacturer's label.

€ 1.500 - 1.800

652

**Löwen Automaten, Bingen
Table ice hockey 'Europameister', 1960s**

H. 104 x 112.5 x 87 cm. Wooden box construction, multicolored laminate, plastic, multicolored, tubular metal, chrome-plated, beech wood. Marked: manufacturer's badge.

€ 700 - 900



652

653

**Dieter Waeckerlin
Side table, c. 1964**

H. 39.5 x 104 x 65.5 cm. Made by Idealheim, Basel. Wenge wood, square metal tube, painted black.

€ 800 - 900

654

**Dieter Waeckerlin
Table light, c. 1964**

H. 72 x 48.5 x 48.5 cm. Made Idealheim, Basel. Wenge wood, sheet metal, chrome-plated, textile shade, beige.

€ 500 - 600



653



654

655

**Pierre Chapo
Settee 'S18', c. 1967**

H. 77.5 x 143 x 87 cm. Made by Chapo Gordes, Gordes. Elm wood, solid, natural leather, brown, polychrome textile cover.

The light blue textile cover is original and largely preserved in good condition. The new textile cover can be easily removed and, if necessary, put on again; Zipper.

€ 1.500 - 2.000

656

**Pierre Chapo
2 armchairs 'S15', c. 1967**

H. 77.5 x 79.5 x 76 cm. Made by Chapo Gordes, Gordes. Elm wood, solid, natural leather, brown, polychrome textile cover.

€ 1.800 - 2.200

657

**Pierre Chapo
Settee 'S32', c. 1967**

H. 77.5 x 205 x 87 cm. Chapo Gordes, Gordes. Solid elm wood, natural leather, brown, polychrome textile covering.

The sofa follows the same design as the previous lot number; The light blue original upholstery fabric has also been retained here under the new cover.

Image online.

€ 1.800 - 2.500

658

**Hans Agne Jakobsson
Ceiling light, 1960s**

H. 26 cm, Ø 20 cm. Made by Ellyset AB, Markaryd. Metal frame, veneer strips. Marked: Manufacturer's label.

Image online.

€ 200 - 250



655



656



660



663

659

**Uno Kristiansson; Østen Kristiansson
Ceiling light '511', 1960s**

H. 110 x 51 x 51 cm. Made by Luxus, Vittsjö. Glass, white, teak.

With replacement glass.

Cf. Sigeback, Under Luxus tak, np. 2008, p. 44.

Image online.

€ 400 - 500

660

**Erwin Behr, Wendlingen (attr.)
3 nesting tables, 1960s**

H. 28-40 x 28-40 x 28-40 cm. Square metal tube, matt chrome-plated, white glass.

€ 700 - 800

661

**Germany
Ceiling light, 1960s**

H. 28 x 55.5 x 55.5 cm. Aluminum tube, aluminum wire, brown leather.

Image online.

€ 300 - 350

662

**The Netherlands
Floor lamp, 1960s**

H. 174 cm, Ø 40 cm. Tubular metal, nickel-plated, wenge wood, stained dark, textile shade, white.

€ 500 - 700

663

**Raak, Amsterdam
Table / ceiling light, 1960s**

H. 20 x 23 x 25 cm. Sheet metal, painted black, plastic, white.

€ 900 - 1.000

664

**Temde Leuchten, Sevelen
Table light, 1960s**

H. 54 x 49 x 49 cm. Glass, white, wood, painted white, tubular metal, painted white.

Image online.

€ 350 - 400

665

**Temde Leuchten, Sevelen
Ceiling light, 1960s**

H. 54 x 50 x 50 cm. Glass, white, tubular metal, sheet metal, painted white, plastic, white.

Image online.

€ 400 - 450



662



666

666

**Pierre Chapo
'L'Oeil' - 'T22' coffee table / bench, c. 1965**

H. 33 x 174 x 116 cm. Made by Atelier Pierre Chapo, France.
Elmwood.

Homo, La Côte du design, Rouen, 2012, p. 106.

€ 5.000 - 6.000

667

**Hein Stolle (attr.)
Armchair, 1960s**

H. 74 x 65 x 63 cm. Beech wood slats.
Presumably handmade.

Image online.

€ 600 - 700

668

**Ingo Maurer
'XL Bulb' table light, 1966**

H. 53,5 cm, Ø 33 cm. Made by Design M, Ingo Maurer,
Munich. Chrome-plated sheet metal, white glass. Marked:
Manufacturer's sticker.

Bauer (ed.), Ingo Maurer Making Light, Munich 1992, p. 26, p.
248.

€ 1.500 - 2.000

669

**Germany
Wall mirror, 1960s**

61.5 x 46 cm. Sheet brass, mirror glass, wood.

Image online.

€ 450 - 500



668

670

Denmark

Ceiling light, 1960s

H. 22.5 cm, Ø 16 cm. Copper lamellas, painted cream-white inside.

€ 900 - 1.200



670

671

France (attr.)

Coffee table, c. 1966

H. 40 cm, Ø 86.5 cm. Aluminum sheet, colorless glass.

€ 900 - 1.200



671

672

Staff & Schwarz Leuchtenwerke, Lemgo

Ceiling light, 1960s

H. 50 cm. Brass tube, brass sheet, glass, opaline white. Image online.

€ 350 - 400

673

Hans-Agne Jakobsson

2 ceiling lights, 1960s

H. 27.5 cm, Ø 27 cm. Made by Hans-Agne Jakobsson, Markaryd. Brass sheet. Marked: designer and manufacturer's stickers.

€ 600 - 700

673



674

674

**Germany
Sideboard, 1960s**

H. 64 x 143 x 45 cm. Wooden box construction, walnut, walnut veneer, inside mahogany veneer.

Veneered on the backside.

€ 1.500 - 2.000

675

**Germany
'Tree trunk' coffee table, 1960s**

H. 49.5 x 200 x 60 cm. Square metal tube, varnished black, oak wood.

€ 500 - 600



675



677

676

**Germany
Candlestick, 1960s**

H. 52.5 x 31 x 30.5 cm. Cast aluminum, plastic, black and white.

€ 900 - 1.200



676

677

**Ingo Maurer
2 'Headlight' ceiling lights, 1968**

H. 42.5 cm, Ø 39 cm (without suspension). Made by Design M, Ingo Maurer, Munich. Sheet metal, chrome-plated, colorless plastic.

Bauer (Ed.), Ingo Maurer Making Light, Munich 1992, p. 34, p. 248 (text).

€ 1.500 - 1.800

678

**Dorothee Maurer-Becker (style)
Spiral table light, c. 1967**

H. 39 cm. Made in Italy. Glass, white, tubular metal, chrome-plated.

Image online.

€ 300 - 400

679

Arne Jacobsen
'Circular' - 'A825' dining table, 1968

H. 70.5 cm, Ø 120 cm. Made by Fritz Hansen, Copenhagen. Tubular metal, cast aluminum, chrome-plated, blockboard with walnut veneer.

€ 1.500 - 2.500



679

680

Sweden
3 wall lights, 1960s

H. 26 x 13.5 x 15,5 cm. Sheet brass.

Image online.

€ 500 - 600

681

Germany
Illuminated serving trolley, 1960s

H. 56 x 64 x 35.5 cm. Square brass tube, sheet brass, perforated sheet, painted black, plastic, white.

Image online.

€ 400 - 500

682

Sweden (attr.)
2 wall lights, 1960s

H. 23 x 15.8 x 26 cm. Tubular brass, brass sheet, painted white inside.

Image online.

€ 400 - 500

683

Michel Cadestin
'Karate' armchair with ottoman, c. 1968

Armchair: H. 89 x 95 x 97; Ottoman: 45 cm, Ø 72 cm. Made by Airborne, Montreuil-sous-Bois. Fiberglass-reinforced plastic, white, sheet metal, painted white, leather, black. Marked: manufacturer's sticker.

Homo, La Côte du design, Rouen, 2012, p. 20.

€ 2.000 - 3.000



684

**Vico Magistretti; Benny Frandsen (style)
2 table lights and a wall light, 1960s**

H. 8-18.5 cm, Ø 11.5-17.5 cm. Made by Artemide, Milan; Denmark or Italy, resp. Sheet metal, yellow, orange and red. Marked: table light 'Eclisse' with manufacturer and designer's info (1x).

Image online.

€ 200 - 300

685

**Gerd Lange
'4035' wall / ceiling light, 1969**

H. 11 cm, Ø 25.8 cm. Made by Kartell, Noviglio. Plastic, black and white. Marked: Manufacturer and designer's info (embossed).

Gramigna, Repertorio 1950-2000, vol. 1, Milan 2011, p. 167.

Image online.

€ 250 - 350

686

**Verner Panton
2 'Flower-Pot' pendant lights, 1969**

H. 15.5 cm, Ø 21.5 cm. Made by Louis Poulsen, Copenhagen. Sheet metal, chrome-plated, lacquered white inside.

Cf. exh. cat. Verner Panton, Vitra Design Museum, Weil / Rhine 2000, p. 192 (Spiegel canteen).

€ 550 - 600

687

**Gerard Long
Two stools, a side table, c. 1969**

H. 71 cm (total), H. 31-36 cm, Ø 51 cm. Made by Bisterfeld & Weiss, Owen/Teck. Plywood, black lacquered, clear glass, imitation leather, black; stackable.

€ 600 - 700



686

688

**Gerd Lange (attr.)
Bar / console table, c. 1969**

H. 81 x 95 x 30.5 cm. Made by Bisterfeld & Weiss, Owen / Teck (attr.) plywood, painted dark brown and gray.

Image online.

€ 300 - 400

689

**Gerd Lange (style)
2 bedside tables, c. 1969**

H. 59.5 cm, Ø 31 cm. Made by Bisterfeld & Weiss, Owen / Teck. Plywood, painted white, mirror glass. Marked: manufacturer's sticker.

Image online.

€ 300 - 400

690

**France (attr.)
Container, 1960s**

H. 75 x 55 x 54.5 cm. Sheet metal, galvanized.

Image online.

€ 250 - 300



687

Philippe Starck

The auction year 2021 manifested a passionate increase in the interest in the work of Philippe Starck. With about 40 objects from a private collection that we present in this chapter, we hope to drum up your enthusiasm once again.

The carefully curated collection reflects the diversity and creative facets of the French designer, from plastic ashtrays and his clean architectural models in polished aluminum to the 'Anna Rustica' chair (1986), equipped with only one armrest, in which Philippe Starck's rebellious humor comes to the fore. In addition to internationally known and popular designs such as the 'Hot Bertaa' kettle and the 'Jim Nature' color TV, other electrical appliances, objects of table culture as well as door handles and coat hooks are part of the offer. The entire limited O.W.O range of polished aluminum objects from 1986 - 1988 is part of this collection.

Particularly exciting in the synopsis are the architectural models, all of which illustrate Philippe Starck's emphasis on the object-like and sculptural in his buildings. His designs switch back and forth between enigmatically organic, strictly geometric, and strikingly symbolic. In any case, the architecture communicates 'loudly' with the inhabitants of the city, as illustrated by the office and commercial building 'Nani Nani' in Tokyo, sheathed with green copper slats and stuck upright in the urban fabric like a kind of shell. In German translation 'Nani Nani' means 'What? What?' and thus captures the feeling of interest and curiosity that arises when confronted with this building. Philippe Starck designed the buildings of the Asahi Brewery headquarters in an equally emblematic manner. The beer hall is crowned with a golden flame that seems to unbalance the building; next to it is the office tower, which imitates a beer glass with a white foam crown. A witty allusion that can be unraveled almost too quickly, but is quite impressive on such a scale.

The collection is complemented by objects by other designers who address wit and irony in a similar way to Philippe Starck. It remains unclear if the 'Niki' ashtray by Lawrence Laske, for example, is an ashtray or a cup. Giuseppe Raimondi's egg cup replicates the shape of the Guggenheim Museum and his salad bowl that of the Sydney Opera House. Isn't it tempting to bring the memory of a piece of great architecture to your own dining table?





694



695



696

691

'Laguiole' architectural model, 1987

H. 12 x 20 x 8 cm. Made by O.W.O, Montfort-l'Amaury. Polished aluminum. Marked: manufacturer's stamp with facsimile signature. In original packaging. Number 99 from a limited edition of 500 copies.

Philippi, STARCK, Cologne 2000, pp. 329, 439.

€ 500 - 700

692

'Asahi' architectural model, 1986

H. 13 x 9 x 18.5 cm. Made by O.W.O, Montfort-l'Amaury. Polished aluminum. Marked: manufacturer's stamp with facsimile signature.

In original packaging. Number 155 from a limited edition of 500 copies.

Philippi, STARCK, Cologne 2000, p. 329.

€ 500 - 700

693

'Moondog' architectural model, 1987

H. 12 x 18 x 5.5 cm. Made by O.W.O, Montfort-l'Amaury. Polished aluminum. Marked: manufacturer's stamp with facsimile signature.

In original packaging. Number 132 from a limited edition of 500 copies.

Philippi, STARCK, Cologne 2000, p. 329.

€ 500 - 700

694

'Europarc' architectural model, 1986/87

H. 5.8 x 15 x 15 cm. Made by O.W.O, Montfort-l'Amaury. Polished aluminum. Marked: manufacturer's stamp with facsimile signature.

In original packaging. Number 208 from a limited edition of 500 copies.

€ 500 - 700

695

'Le Moul't' architectural model, 1986/87

H. 7.5 x 23 x 4.5 cm. Made by O.W.O, Montfort-l'Amaury. Polished aluminum. Marked: manufacturer's stamp with facsimile signature.

In original packaging. Number 112 from a limited edition of 500 copies.

Philippi, STARCK, Cologne 2000, p. 333.

€ 500 - 700

696

'Nani Nani' architectural model, 1986

H. 15 x 11.5 x 7 cm. Made by O.W.O, Montfort-l'Amaury. Polished aluminum. Marked: manufacturer's stamp with facsimile signature.

In original packaging. Number 132 from a limited edition of 500 copies.

Philippi, STARCK, Cologne 2000, p. 331.

€ 500 - 700

697

'Miss Zenzen' sculpture, 1986

H. 26.5 cm. Made by O.W.O, Montfort-l'Amaury. Polished aluminum. Marked: manufacturer's stamp with facsimile signature.

In original packaging. Number 180 from a limited edition of 500 copies.

Philippi, STARCK, Cologne 2000, p. 331.

€ 500 - 700

698

'Luciana Fortyfour' lantern, 1988

H. 25 cm. Made by O.W.O, Montfort-l'Amaury. Polished aluminum, glass. Marked: manufacturer's stamp with facsimile signature.

In original packaging.

Philippi, STARCK, Cologne 2000, p. 333.

€ 300 - 400



697



698



699



700

699

'Smoky Christiani' corkscrew, 1986

H. 26.5 cm. Made by O.W.O, Montfort-l'Amaury. Polished aluminum. Marked: manufacturer's stamp with facsimile signature.

In original packaging.

Philippi, STARCK, Cologne 2000, p. 333.

€ 200 - 300

700

'Picfeu' poker, 1986/87

L. 60 cm. Made by O.W.O, Montfort-l'Amaury. Stainless steel.

In original packaging.

Philippi, STARCK, Cologne 2000, pp. 333.

€ 150 - 200



701



702

701

'O'Kelvin' candle holder, 1989

H. 36 cm, Ø 13.5 cm. Made by O.W.O, Montfort-l'Amaury. Polished aluminum, glass, orange and white. Marked: manufacturer's stamp with facsimile signature.

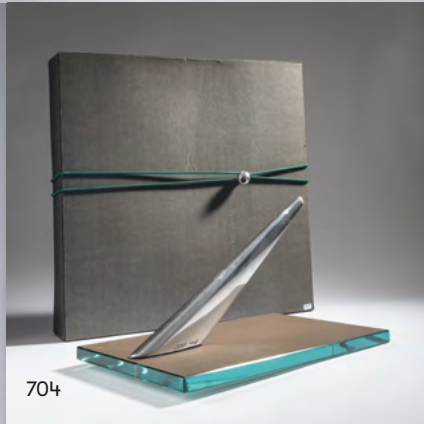
In original packaging.

Philippi, STARCK, Cologne 2000, p. 331.

€ 200 - 250



703



704

702

'O'Kelvin' candle holder, 1989

H. 36.5 cm, Ø 14 cm. Made by O.W.O, Montfort-l'Amaury. Polished aluminum, clear glass. Marked: manufacturer's stamp with facsimile signature.

In original packaging.

Philippi, STARCK, Cologne 2000, p. 331.

€ 200 - 250

703

'Joe Raspoutine' wall candle holder, 1987

H. 19 x 21 x 13.5 cm. Made by O.W.O, Montfort-l'Amaury. Polished aluminum. Marked: manufacturer's stamp with facsimile signature.

In original packaging.

Philippi, STARCK, Cologne 2000, p. 329.

€ 200 - 250



705



708

704

'Miss Donna' table mirror, 1987

H. 41 x 24 x 24 cm. Made by O.W.O, Montfort-l'Amaury. Polished aluminum, clear glass. Marked: manufacturer's stamp with facsimile signature.

In original packaging.

Philippi, STARCK, Cologne 2000, p. 333.

€ 500 - 600

705

'Ray Hollis' ashtray, 1986

H. 11 x 11.5 x 7 cm. Made by XO, Brie-Compte-Robert. Polished aluminum. Marked: facsimile signature, handwritten signature.

Philippi, STARCK, Cologne 2000, p. 325.

€ 200 - 300

706

2 sets of 'Berta Youssouf' place card holders, 1987

8 pieces. H. 4.5 cm. Made by O.W.O, Montfort-l'Amaury. Polished aluminum. Marked: facsimile signature (1 set).

In original packaging.

Philippi, STARCK, Cologne 2000, p. 331.

Image online.

€ 200 - 250

707

6 'Mimi Bayou' door handles, 1987

L. 7 cm. Made by O.W.O, Montfort-l'Amaury. Polished aluminum.

With original packaging.

Philippi, STARCK, Cologne 2000, p. 333.

Image online.

€ 200 - 250

708

2 'Chab Wellington' coat hooks, 1987

H. 12.5 x 6 x 11.5 cm. Made by O.W.O, Montfort-l'Amaury. Polished aluminum. Marked: manufacturer's stamp with facsimile signature.

In original packaging.

Philippi, STARCK, Cologne 2000, p. 333.

€ 100 - 120

709

'Laguiole knife' folding knife, 1986

L. 21 cm. Made by O.W.O, Montfort-l'Amaury. Stainless steel, polished aluminum, brass. Marked: Laguiole®.

In original packaging.

Philippi, STARCK, Cologne 2000, p. 329.

Image online.

€ 120 - 180

710

6 'Laguiole' knives, 1986

H. 21.5 cm. Made by O.W.O, Montfort-l'Amaury. Stainless steel. Marked: Laguiole®.

In original packaging.

Philippi, STARCK, Cologne 2000, p. 331.

€ 400 - 500

711

2 sets of 'Pointus' cutlery, 1986

12 pieces. L. 15.2-25.3 cm. Made by O.W.O, Montfort-l'Amaury. Stainless steel. Marked: facsimile signature.

In original packaging. A set consists of a dining spoon, a dining fork, a knife, a teaspoon and 2 chopsticks.

Philippi, STARCK, Cologne 2000, p. 331.

€ 400 - 500

712

3 'Joe Cactus' ashtrays, 1990

H. 20 cm. Made by O.W.O, Montfort-l'Amaury. Bakelite, brown, dark green, black, dark red. Marked: manufacturer's stamp with facsimile signature.

In original packaging.

Philippi, STARCK, Cologne 2000, pp. 332.

€ 150 - 200

713

Desk set, 1992

4 pieces. H. 5.5-9 x 23 x 17.5 cm. Made by O.W.O, Montfort-l'Amaury. Bakelite, dark red, green plastic. Marked: manufacturer's stamp with facsimile signature.

Each piece in original packaging. Included: 13 colored pens, notepad.

€ 300 - 400



710



711



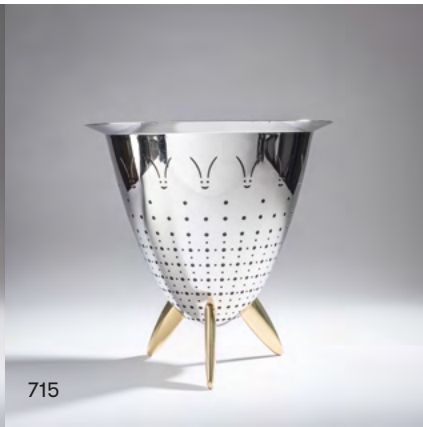
712



713



714



715



716



717



718



719



720



721

714

'Hot Bertaa' kettle, 1990/91

H. 26 cm. Made by Alessi, Crusinallo. Aluminum sheet, silicone and polyamide. Marked: manufacturer's stamp.

In original packaging.

Sweet, Alessi. Art and Poetry, London 1998, p. 36; Philippi, STARCK, Cologne 2000, p. 342f.

€ 150 - 200

715

'Max Le Chinois' sieve, 1990

H. 29.5 cm, Ø 30 cm. Made by Alessi, Crusinallo. Stainless steel, plastic insert. Marked: manufacturer's mark.

Philippi, STARCK, Cologne 2000, pp. 340.

€ 100 - 120

716

9 toothbrushes, 1989

H. 19.5 cm. Made by Fluocaril, France. Plastic, purple, orange, green, red, black and gray. Marked: STARCK (embossed).

Each toothbrush is individually packed in its original packaging.

Philippi, STARCK, Cologne 2000, pp. 256.

€ 150 - 200

717

2 radios, 'Moa Moa' and 'La La La', 1994

H. 12.5 x 23 x 12 cm. Made by Telefunken, Berlin. Bakelite, auburn and green. Marked: Manufacturer and model information with facsimile signature.

Both in their original packaging and from limited editions of 8000 copies each.

Philippi, STARCK, Cologne 2000, p. 300f.

€ 300 - 400

718

'Coo Coo' clock radio, 1996

H. 22 x 10.5 x 10.5 cm. Made by Thomson, Paris for Alessi, Crusinallo. Plastic, rust-red, black and colorless. Marked: manufacturer's mark with facsimile signature.

Battery-driven.

Philippi, STARCK, Cologne 2000, p. 303.

€ 150 - 200

719

'Jim Nature' TV-set, 1994

H. 38 x 39 x 41 cm. Made by Saba, France. Chipboard, light green plastic, glass. Marked: manufacturer's sticker.

With: remote control, antenna, instructions for use.

Philippi, STARCK, Cologne 2000, p. 297.

€ 300 - 400

720

'Oz' TV-set, 1994

H. 36 x 37 x 36 cm. Made by Telefunken, Berlin. Plastic, painted gold, mahogany veneer. Marked: facsimile signature.

With: remote control and antenna in original packaging, catalog 'Telefunken 1995-1996', instructions for use, brochure Telefunken.

Philippi, STARCK, Cologne 2000, p. 296.

€ 300 - 400

721

2 'Colucci' stools / containers, 1986

H. 45 cm, Ø 39 cm. Made by Driade Aleph, Milan. Aluminum sheet, painted gray, red and blue. Marked: manufacturer's sticker (1x), manufacturer's mark (2x).

Philippi, STARCK, Cologne 2000, p. 182.

€ 250 - 350

722

'Pat Conley II' armchair, 1985

H. 76 x 55.5 x 77 cm. Made by XO, Brie-Compte-Robert. Tubular metal, sheet metal, anodized silver. Marked: manufacturer's stamp.

Philippi, STARCK, Cologne 2000, p. 218.

€ 500 - 700

723

2 'Romantica' stacking chairs, 1987/88

H. 89.5 x 43 x 64.5 cm. Made by Driade, Milan. Tubular aluminum, seat made of riveted aluminum sheet.

Philippi, STARCK, Cologne 2000, p. 183.

€ 300 - 400

724

'Anna Rustica' armchair, 1986

H. 91 x 46 x 56 cm. Made by Driade Aleph, Milan and O.W.O, Montford L'Amaury. Beech wood, beech plywood, painted green, paper cord mesh. Marked: manufacturer's stamp O.W.O.

Included: Brochure Driade Aleph.

€ 250 - 350

725

Mixed lot of specialized literature, 1980-90s

7 pieces: Leaflet 'Thomson Collection', Paris, 1990s; Leporello O.W.O Philippe Starck Collection, Montford L'Amaury, ca. 1988; Irace, Fulvio: Dimore Metropolitane, Milan 1992; Meneguzzo, Marco (ed.): Philippe Starck Disordre, Milan 1996, signed by Ph. Starck; Boissière, Olivier: Starck®, Cologne 1991; Colin, Christine: Philippe Starck, Tübingen 1989;

Included: Ingo Maurer, Philippe Starck cardboard mask, 1998; Invitation to the exhibition 'Starckologie', Frankfurt a.M. 1996.

€ 250 - 350



722



723



724



726
Shiro Kuramata
'SingSingSing' armchair, 1986

H. 91 x 52 x 65 cm. Made by XO, Brie-Compte-Robert. Tubular metal, expanded metal, matt nickel-plated. Marked: XO (embossed).

Fiell, 1000 Chairs, Cologne 1997, p. 574; Sudjic, Shiro Kuramata Catalogue of works, London 2013, p. 335.

€ 800 - 1.200



727
Achille Castiglioni
'Mezzadro' stool, 1957

H. 52 x 43 x 55 cm. Made by Zanotta, Nova Milanese. Strip steel, chrome-plated, sheet steel, painted red, beech wood. Marked: MEZZADRO, DESIGN A. CASTIGLIONI, manufacturer label with designer's signature.

With: design sketch, signed and Paolo Ferrari, 'Achille Castiglioni - Master of Contemporary Design', Milan 1984.

Sembach, Neue Möbel, Stuttgart 1982, No. 204.

€ 700 - 900



728
Charles & Ray Eames
'Legsplint', 1943

L. 107 cm, B. 20 cm. Made by Evans Products Company, Gardena, 1940s. Plywood. Marked: S2-1790 (embossed); original manufacturer label.

In original packaging.

Neuhart / Eames, Eames Design, New York 1994, p. 32f; Antonelli, Design, The Collection of the Museum of Modern Art New York, Munich 2003, p. 154.

€ 500 - 600

729

Giuseppe Raimondi
'Guggenheim' egg cup from the 'I Monumenti' series, 1975

H. 13 x 21 x 15 cm. Made by Anthologie Quartett, Bad Essen. Earthenware, glazed white. Marked: anthologie QUARTETT (blue glaze stamp) No. 20 (gold, handwritten).

Image online.

€ 250 - 350

730

Giuseppe Raimondi
'Opera Sydney' salad bowl from the 'I Monumenti' series, 1975

H. 19.5 cm, Ø 33.5 cm. Made by Anthologie Quartett, Bad Essen. Earthenware, glazed white. Marked: Rg. No. 11 (gold, handwritten).

Image online.

€ 250 - 350

731

Protos
'Tasa', prototype centerpiece, 1986

H. 33 cm, Ø 19 cm. Made by Anthologie Quartett, Bad Essen, 1990. Colorless glass. Marked: PROTOS fr. AQ, ES 90/3 (diamond-cut).

€ 250 - 350



731

732

Protos
2 'Lux-or' candlesticks, 1986

H. 31.5-41.3 cm. Made by Anthologie Quartett, Bad Essen, 1988, 1990. Colorless glass. Marked: PROTOS for AQ, ES 88/5 or 90/1 (diamond-cut).

€ 400 - 500

733

Sergio Calatroni
6 'Base' knife rests, 1985

H. 1.5-3 cm, L. 8 cm. Made by Anthologie Quartett, Bad Essen. Brass, silver-plated. Marked: L. CENA, ZEUS (embossed).

2 knife rests marked: LH, 835, presumably silver, added.

Image online.

€ 250 - 300

734

Luigi Serafini
'Ab ovo' egg cup, 1986

H. 14.8 cm. Made by Anthologie Quartett, Bad Essen. Nickel-plated brass, earthenware, white glaze, gray craquelure.

Image online.

€ 150 - 200



732



735

735

Jean-Michel Alberola
'Astronomie Populaire' boules game, 1980s

Ø 7.5 or 3.5 cm. Made by O.W.O, Montfort-l'Amaury. Polished aluminum, wood, leather harness. Marked: manufacturer's stamp.

In original packaging.

€ 400 - 500

736

Ingrid Gossner; Reinhard Paulus
'Navy' fruit bowl, 1989

H. 8 x 49 x 16.5 cm. Made by O.W.O, Montfort-l'Amaury. Aluminum sheet. Marked: Navy.

In original packaging.

Image online.

€ 150 - 200

737

Lawrence Laske
'Niki' ashtray, 1989

H. 8 cm, Ø 15 cm. Made by O.W.O, Montfort-l'Amaury. Earthenware, glazed white. Marked: manufacturer's mark with facsimile signature.

Image online.

€ 200 - 350

738

Alessandro Mendini
'In Fumo' ashtray, 1989

H. 12.5 cm, Ø 15 cm. Made by O.W.O, Montfort-l'Amaury. Polished aluminum. Marked: manufacturer's stamp with the designer's initials.

Image online.

€ 150 - 200

Philippe Starck

743



739

'Mister Bliss' rocking chair, 1982

H. 50.5 x 37 x 70 cm. Made by XO, Brie-Compte-Robert. Tubular steel, painted black, fabric, black.

In need of restoration.

Philippi, STARCK, Cologne 2000, p. 218.

Image online.

€ 300 - 400

740

'Smoky Christiani' corkscrew, 1986

H. 27 cm. Made by O.W.O, Montfort-l'Amaury. Polished aluminum. Marked: manufacturer's stamp with facsimile signature.

Philippi, STARCK, Cologne 2000, p. 333.

Image online.

€ 200 - 300

741

4 'Berta Youssouf' place card holders, 1987

H. 4.7 cm. Made by Officina Alessi, Frankreich. Polished aluminum. Marked: OFFICINA ALESSI FRANCE, facsimile signature.

Philippi, STARCK, Cologne 2000, p. 331.

Image online.

€ 160 - 180

742

'L'Etrangete' vase, 1988

H. 9.5 x 33 x 10 cm. Made by Daum, Nancy. Blue glass, satined. Signed: Daum STARCK. Cf. Philippi, STARCK, Cologne 2000, p. 85.

€ 500 - 800

743

'Etrangeté', 1988

H. 44 x 60 x 40 cm. Made by Daum, Paris. Dark purple glass, frosted, on colorless glass. Marked: DAUM, Starck, 25/50 (diamond-cut).

The number 25 from a limited edition of 50 pieces.

€ 900 - 1.200

744

'Lola Mundo' folding chair / stool, 1988

H. 49 x 48 x 46 cm, folded out: H. 85 cm.

Made by Driade, Caorso. Ebonized ash, cast aluminum, rubber nails. Marked: Manufacturer's label.

Philippi, STARCK, Cologne 2000, p. 174f.

€ 900 - 1.200

745

'Techno' barber chair, 1989

H. 86 x 64 x 58 cm. Made by Maletti S.p.A., Scandiano. Cast aluminum, plastic, painted anthracite, black leatherette. Designation: facsimile signature.

Cf. Philippi, STARCK, Cologne 2000, p. 203.

Image online.

€ 400 - 500

746

'Joe Cactus' ash tray, 1990

H. 20.5 cm. Made by Officina Alessi, Portugal. Bakelite, black and green. Marked: OFFICINA ALESSI PORTUGAL, STARCK.

Philippi, STARCK, Cologne 2000, pp. 332.

Image online.

€ 60 - 80

747

'WW Stool', 1990

H. 97 x 50 x 53.5 cm. Made by Vitra, Weil / Rhine. Cast aluminum, painted turquoise.

Marked: Starck (signed by hand).

Philippi (Ed.), STARCK, Cologne 2000, p. 155.

€ 1.500 - 2.500

748

'Hot Bertaa' teapot with cream dispenser, 'Ti Tang & Su Mi Tang' creamer, miniature 'Hot Bertaa', thermos 'Hot Fredo (Alfi)' and lemon squeezer 'Juicy Salif', 1990-1993

6 pieces. H. 8.5-37 cm. Made by Alessi, Crusinallo. Stainless steel, porcelain, white, plastic, turquoise and cream-colored, aluminum sheet. Marked: various manufacturer's stamps and stickers.

Philippi, STARCK, Cologne 2000, pp. 339, 343, 398.

Image online.

€ 300 - 350

749

'Walla Walla' wall light, 1994

H. 37.5 x 29.5 x 8 cm. Made by Flos, Brescia. Plastic, white and anthracite.

With replacement shade and original bulb.

In original packaging.

Image online.

€ 300 - 400

750

3 'Dr. No' chairs, 1996

H. 80.5 x 51 x 52 cm. Made by Kartell, Noviglio. Tubular aluminum, plastic, various shades of gray. Marked: Designer and manufacturer's info (embossed).

Stackable.

Philippi, STARCK, Cologne 2000, p. 167.

Image online.

€ 180 - 220

751

'La Marie' chair, 1997

H. 84 x 38 x 54 cm. Made by Kartell, Noviglio. Plastic, colorless. Marked: Designer and manufacturer's info (embossed).

Philippi, STARCK, Cologne 2000, p. 170.

Image online.

€ 100 - 120

752

'Cicatrices De Luxe F' floor lamp, 2003

H. 131 x 18 x 24 cm. Made by Flos, Brescia. Sheet metal, square metal tube, clear plastic, glass. Marked: Manufacturer's mark.

Image online.

€ 800 - 900

753

'Illusion' table, 1992

H. 77 x 211.5 x 112 cm. Made by Fiam, Pesaro. Sectional metal, blackened, brass, glass, dark blue. Marked: stamp on three of four support points (legs): FIAM, STARCK, 30.

One of the four glass corners had broken off and was glued back on. A copy of this table was exhibited at the exhibition in the Center George Pompidou, Paris, 2003. There are only a few specimens with a dark blue glass plate.

Philippi, STARCK, Cologne, 1996, p. 300.

€ 4.000 - 5.000



744



747



753



754

754

**Louis Weisdorf
2 'Facet Pop' ceiling lights, 1970**

H. 27.5 cm, Ø 18 cm. Made by Lyfa, Ballerup. Sheet brass, painted orange on the inside. Marked: manufacturer's stamp.

www.danish-lights.com

€ 1.300 - 1.800

755

**France
Table light, 1970s**

H. 104 x 68 x 50 cm. Wood, stained dark, sheet brass, tubular brass.

€ 900 - 1.200



756

756

**Pilati, Munich (style)
Wall mirror, 1970s**

H. 148 x 108.2 x 1.2 cm. Leaded glass, polychrome, mirror glass.

€ 700 - 900

757

**Vitra, Weil / Rhine
'Convecta' shelf and side table, 1970s**

Side table: H. 33 x 44 x 44 cm; Shelf: H. 94 x 86 x 45 cm. Square metal tube, chrome-plated. Marked: vitra (sandblasted).

Image online.

€ 350 - 400

758

**Pierre Cardin (attr.)
Table, 1970s**

H. 71 cm, Ø 118 cm. Made in France (attr.). Strip metal, painted black, gray glass.

Image online.

€ 700 - 1.100



755



759

759

**Curtis Jeré; Curtis Freiler; Jerry Fels
'Crane' table light, 1977**

H. max. 110 cm; Extension arm: L. 110 cm. Metal rods, tubular metal, sheet metal, steel cable, strip metal, painted black. Marked: C. Jeré, 1977 (handwritten).

€ 1.500 - 2.000



761



760

**Kazuhide Takahama
'Sirio' floor lamp, 1977**

H. 186.5 x 45 x 43 cm. Made by Sirrah, Milan. Sectional metal, painted black, sheet aluminum, painted black, plastic, red. Image online.

€ 500 - 600

761

**Reinhold Adolf; Hans-Jürgen Schröpfer
'Sinus' armchair and stool, 1976**

H. 90 x 72 x 92 cm; Ottoman: H. 47 x 72 x 57 cm. Made by Cor, Rheda-Wiedenbrück. Chromed and matted steel, brown leather. In 2010 the armchair and ottoman were reupholstered and the leather was professionally cleaned.

Cf. Lübke, Cor, Rheda-Wiedenbrück 2003, pp. 50, 56f.; Albus et al., moderne Möbel 150 Jahre Design, Königswinter 2009, p. 316.

€ 1.800 - 2.500

762

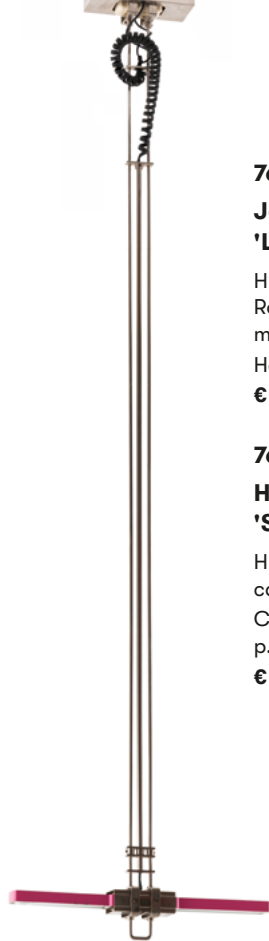
**Frank O. Gehry
'Skinny Beaver' chair, 1979**

H. 87 x 50 x 80 cm. Made by New City Editions, Canada. Glued corrugated cardboard. Marked paper template on metal plaque, handwritten: SIT. BEAV 30/250, signature traced through.

Cf. Fiell, 1000 Chairs, Cologne 1997, p. 586.

€ 3.000 - 3.800





763

763

**Jean-Marc Da Costa
'Lift' ceiling light, 1983**

H. 136-200 x 36 x 6.5 cm. Made by Serien Lighting, Rodgau. Sheet metal, painted pink and white, sheet metal, nickel-plated tubular metal.

Height adjustable.

€ 1.000 - 1.200

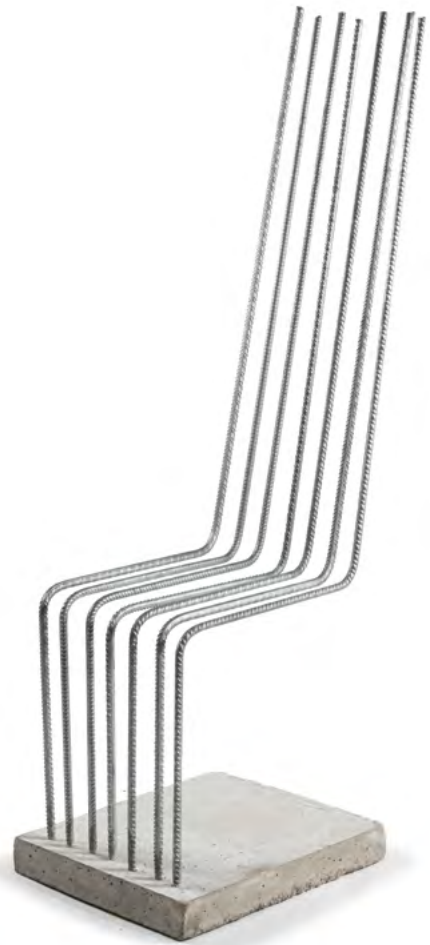
764

**Heinz Landes
'Solid chair', 1983**

H. 135 x 38 x 58.5 cm. Reinforcement rod, galvanized, cast concrete.

Cf. Hauffe, Fantasie und Härte, Giessen 1994, Cover, p. 84 (1st version).

€ 2.200 - 3.000



764

765

**Ko (Jacobus Johannes Josephus)
Verzoo (style)
6 'Apollo' - '3017' children's chairs,
1980s**

H. 49.5 x 35.5 x 37.5 cm. Made by ADO, Berg en Bosch. Laminated wood. Marked: distributor's sticker.

Uit de Bosch/Van Den Broeke, Speelgoed Met Een Doel 85 Jaar ADO, np 2007, p. 60.

Image online.

€ 350 - 400

766

**Ko (Jacobus Johannes Josephus)
Verzoo (style)
7 'Apollo' - '3017' children's chairs,
1980s**

H. 57.5-73.5 x 37.5-40.5 x 37.5-43.5 cm. Made by ADO, Berg en Bosch. Plywood.

Uit de Bosch/Van Den Broeke, Speelgoed Met Een Doel 85 Jaar ADO, np 2007, p. 60.

Image online.

€ 400 - 500



767





768

767

Kisho Kurokawa
2 'Edo 2' chairs, c. 1982

H. 107 x 44.5 x 53 cm. Made by PPM, Tokyo. Wood painted black and violet, leather, brown.

Kisho Kurokawa is considered as one of Japan's most influential contemporary architects, the world-renowned Nagakin Capsule Tower, one of Japan's most important architectural monuments, as his most important early work; the new wing of the Van Gogh Museum in Amsterdam as his most important late work.

Leather added.

€ 1.200 - 1.800

768

Deutschland
Ceiling light, 1984

H. 80 x 45 x 45 cm. Sheet metal, metal rods, partially painted white, clear glass.

With draft on cardboard, 64.5 x 50 cm.

€ 900 - 1.000

769

Stephen Savage
Projection clock 'Time Beam', 1985

H. 23.5 x 23 x 15.5 cm. Made by Timebeam, England. Sheet metal, red, yellow, blue and black, tubular metal, chrome-plated, plastic, black. Marked: manufacturer's badge.

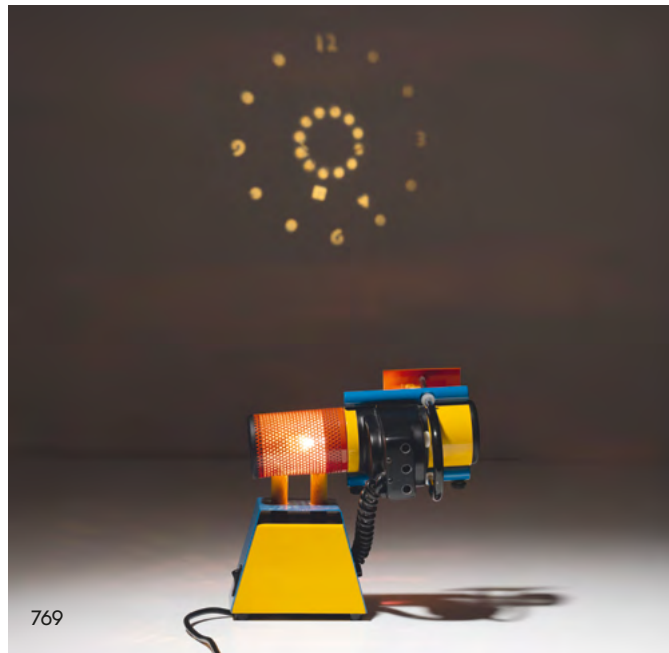
€ 900 - 1.500

770

Xavier Matégot
'X3' armchair, c. 1986

H. 71 x 54 x 61 cm. Made by Christian Farjon, France. Tubular metal, chrome-plated, cast aluminium, painted grey, wood, painted grey. Marked: C XM3, D XM3 (embossed).

€ 800 - 900



769

771

Jorge Pensi
'Regina-T' table light, 1987

H. 58 x 26 x 16 cm. Made by B-Lux, Okamika. Cast aluminum, metal rods. Marked: Made in Spain (embossed). Image online.

€ 250 - 350



770

772

**Coop Himmelb(l)au; Helmut Swiczinsky; Wolf D. Prix
'Vodöl himmelblau' armchair, 1988**

H. 79 x 200 x 90 cm. Made by Vitra Design, Weil / Rhine. Metal support, painted blue, tubular metal, matt chrome-plated, leather, 'sky blue' (light green).

€ 5.000 - 6.000



Helmut Swiczinsky and Wolf D. Prix from the Austrian Coop Himmelb(l)au belong to the group of deconstructivists. The movement breaks completely with pure functionalism. In the process, structural shells are taken apart and the components reassembled in an unusual way. The 'Vodöl Himmelblau' armchair is the first attempt by Coop Himmelb(l)au to deal with the classic forms of modernity. They take the 'Fauteuil grand confort', designed by Le Corbusier, Pierre Jeanneret and Charlotte Perriand in 1928, as their starting point. This chair is strictly kept form-follows-function' square. The tubular steel frame delimits precisely the upholstered cushions placed one on top of the other. The 'Vodöl Himmelblau', on the other hand, sits on a double T-beam, a beam Ludwig Mies van der Rohe liked to use in his buildings; it looks crooked, balancing in the inclined position. The steel tube that actually should define the shape is bent on one side, apparently without any function. One hardly dares to sit down! The steel springs attached under the seat offer enough support and provide gently swaying, cozy seating comfort, though. The name is owed to the Viennese dialect, the French "Fauteuil" becomes "Vodöl", the - rather greenish - color of the leather armchair is simply called "himmelblau" as a wink to the creators.



773

773
Daniel Weil; Gerard Taylor
2 'Puzzle 1' wall lights, 1988

H. 39 x 16.5 x 45 cm. Made by Memphis, Milan. Sheet metal, polychrome lacquer, white plastic.

€ 2.500 - 3.500



774

774
Daniel Weil; Gerard Taylor
2 'Puzzle 2' wall lights, 1988

H. 44 x 16 x 67 cm (with spreader). Made by Memphis, Milan. Sheet metal, polychrome lacquer.

€ 2.500 - 3.500



775

775
Christian Liaig (attr.)
Side table / stool, c. 1987

H. 44.5 x 24.5 x 24.8 cm. Made by Holly Hunt, Chicago (attr.). Solid wood, stained black.

€ 1.800 - 2.200

776

Masayuki Kurokawa
'Lavinia' table light, 1988

H. 40 x 59.5 x 51.3 cm. Made by Artemide, Milan. Sheet metal, white shrink varnish. Marked: Artemide, Masayuki Kurokawa, Made in Italy (embossed).

Fiell, 1000 Lights, Vol. 2, Cologne 2005, p. 373.

€ 3.000 - 4.000



777

Bořek Šípek
'Tree' hall stand / floor lamp, 1988

H. 209 x 56.5 x 54 cm. Made by Vitra, Weil / Rhine. Metal profile and sheet metal, painted silver and black, metal and brass, painted red, wood, painted black.

Exh. cat. Borek Sipek, Steltman Galerie & Editions, Prague 1993, p. 25.

€ 900 - 1.000

778

Danny Lane
'Etruscan' chair, 1990

H. 90 x 42.5 x 63.5 cm; Glass: 2 cm. Made by Danny Lane Studio, London. Glass, forged steel in relief, aluminum. Marked: facsimile-signature Danny Lane, 60/100 1990.

From an edition of 100 copies.

Albus/Fischer, 13 nach Memphis, Munich 1995, p. 94.

€ 2.800 - 3.200

779

Vitra Workshop
Chair, c. 1990

H. 84 x 55.5 x 60 cm. Made by Vitra, Weil / Rhine. Plywood, red nylon cord.

€ 450 - 500





779

780

**Flexform, Meda
Folding armchair / ottoman, 1990s**

H. 71 x 63.5 x 74 cm. Made by Flexform, Meda. Black fabric, metal rails, wooden wheels. Marked: Flexform (embroidered label).

Image online.

€ 250 - 300

781

**Tejo Remy
'Milk bottle lamp', 1991**

H. 310 x 36 x 27 cm. Made by DMD, Voorburg for Droog Design, Amsterdam. Sandblasted glass, sheet metal.

With original assembly instructions.

Exh. cat. made in Holland - design from the Netherlands, Museum for Applied Arts Cologne, Cologne 1994, p. 89; Fiell, 1000 Lights, Vol. 2, Cologne 2005, p. 398; Bergvelt / van Burkom / Gaillard, Van Neorenaissance tot Postmodernisme, Rotterdam 1996, p. 344.

€ 600 - 700



781

782

**Stefan Heiliger
Recliner 'Relax Chair Solo', 1996**

H. 98 x 81 x 90-127 cm. Made by WK Wohnen, Rheda-Wiedenbrück; Designo, Dreieich. Tubular metal, sheet metal, anodized silver, leather, black and blue, plastic, black.

€ 1.500 - 2.000

783

**Christian Liaigre
'Pastora' table light, 1990s**

H. 69 x 20 x 17.5 cm. Made by Christian Liaigre, Paris. Sheet metal, tubular metal, painted dark brown, white paper shade. Marked: CL (2x).

Image online.

€ 400 - 500



782



785

784

Fumio Shimizu

'Giselle I' table light, from the 'Follies' series, 1990s

H. 37 cm. Made by Driade, Caorso (attr). Tubular metal, sheet metal.
Image online.

€ 250 - 300

785

Ron Arad

'Double Soft Big Easy' sofa, 1990

H. 100 x 200 x 100 cm. Made by Moroso, Milan, 1990s. Metal, polyurethane upholstery with red textile cover. Marked: manufacturer's metal badge on the underside.

Cf. Exh. cat. Ron Arad no discipline, CGP, Paris 2008, p. 162; cf. Sudjic, Ron Arad, London 1999, p. 54f.

€ 2.500 - 3.000

786

Ron Arad

Bar stool from the 'Hotel' series, 1992

H. 80.5 x 41 x 49 cm. Made by Zeus, Savonarola. Tubular metal, sheet metal, painted black, plywood, rubber, black.

Cf. Albus/ Fischer, 13 nach Memphis, Frankfurt a. M. 1995, p. 182 ('Hotel' series).

€ 400 - 500



786

787

Jasper Morrison
Bistro table with two stools from the 'Atlas System'
series, 1992

Table: H. 110 cm, Ø 59.5 cm. Stool: H. 68 / 79 cm, Ø 40 cm. Made by Alias, Bergamo. Tubular aluminum, sheet aluminum, wood, white laminate, textile covers, red and green.

Morrison / Müller, Jasper Morrison Everything but the Walls, Baden 2002/2006, p. 46ff.

€ 1.200 - 1.500

788

Marc Newson
'Orgone lounge chair', 1993

H. 84 x 77 x 103 cm. Made by Cappellini, Milan, 1999. Polyethylene, light grey. Marked: Date ring February 1999, manufacturer's information and number 77.

Rawthorn, Marc Newson, London 1999, p. 85.

€ 1.200 - 1.500

789

Lothar Kluthe
Floor lamp, 1990s

H. 171.5 cm, Ø 61 cm. Cast bronze, metal wire.

€ 1.000 - 1.400

790

Ingo Maurer
'Zettel'z' ceiling light, 1998

H. 80 cm, Ø 80 cm (circa). Made by Design M Ingo Maurer, Munich. Stainless steel, steel wire, matted glass.

Paper missing.

Dessecker, Maurer Designing with Light, Munich 2008, p. 66.

Image online.

€ 400 - 500





791

**Michael Young
Three 'Sticklights', 1997**

H. 190 cm. Eurolounge, London, 2003. Plastic, white.
€ 1.200 - 2.000

792

**Ron Arad; Nick Crosbie
'Memo' beanbag chair, 1999**

H. c. 58 cm, Ø c. 103 cm. Made by Inflate Studio, London.
Dark-grey PVC, styrofoam. Marked: DESIGN RON ARAD
AND INFLATE STUDIO 1999 MADE IN CHINA.

Image online.
€ 600 - 800

793

**Benny Mosimann
Secretary 'WOGG 23', 1999**

H. 156.5 x 113.5 x 63.5 cm. Made by WOGG, Dättwil. Tubular metal, sheet metal, white melamine, beech wood.

€ 1.100 - 1.500

794

**Germany (attr.)
Coffee table, c. 2000**

H. 42 x 103.5 x 73 cm. Metal belt, sheet metal, sectional metal, cast metal, clear glass.

Provenance: Collection of Prof. Dr. Florian Hufnagl.
Image online.

€ 450 - 500

795

**Flexform, Meda
'Vienna' side table, c. 2000**

H. 53 x 35 x 40 cm. Ash wood, stained dark. Marked: manufacturer's badge.

Image online.
€ 300 - 400

796

**Fernando Campana; Humberto Campana
'Zig Zag' stool, 2001**

H. 64 cm, Ø 41 cm. Made by Edra, Milan. Tubular metal painted silver, black PVC tube.

Price et al., Campana Brothers. Complete Works (so far), London 2010, p. 139.

Image online.
€ 600 - 700





797

**Christian Liaigre
2 'Galerie' table lights, 2000s**

H. 40 x 22 x 14 cm. Made by Christian Liaigre, Paris. Sheet metal, painted black, white paper shade.

€ 600 - 700

798

**Christian Liaigre
Armchair, 2000s**

H. 105.5 x 73 x 71 cm. Made by Christian Liaigre, Paris. Wood, stained black, dark brown leather.

€ 900 - 1.200

799

**Antonio Citterio
'Mida' cabinet, c. 2003**

H. 105.5 x 100 x 50 cm. Made by Maxalto, Novedrate. Wood, plywood, painted red inside, gray-brown outside, square metal tube, painted dark gray.

Image online.

€ 400 - 500

800

**Karim Rashid
'Cadmo' floor lamp, 2006**

H. 174 cm, Ø 33 cm. Made by Artemide, Milan. Sheet metal, painted white and black, partially chrome-plated.

Dardi (Ed.), Lampade, Milan 2007, p. 58.

€ 600 - 700



798



800



801

801

**Studio EOOS; Martin Bergmann, Gernot Bohmann, Harald Gründl
'Together' bench, 2004**

H. 78 x 149 x 68 cm. Made by Walter Knoll, Herrenberg. Dark brown leather. Marked: manufacturer's sticker, manufacturer's label.
€ 1.500 - 2.000



802

802

**David Lopez Quincoces
3 'Anin' stools, 2014**

H. 38.5 x 54.5 x 36 cm. Made by Living Divani, Anzano del Parco. Sheet metal, painted gray-black.
€ 700 - 800



803

803

**PearsonLloyd
'Oscar' armchair and ottoman, 2012**

H. 103.5 x 89 x 87 cm; H. 38 x 51 x 47 cm. Made by Walter Knoll, Steinheim / Murr. Leather, red, cast aluminum, chrome-plated. Marked: manufacturer's label Walter Knoll. Made in Germany; Walter Knoll (woven).
€ 1.000 - 1.500

804

**Schuster joinery, Bavaria
One-off side table / bench, c. 2012**

H. 37 x 266 x 34 cm. Solid wenge wood, oiled. Custom-made. Image online.
€ 600 - 700

805

**Schuster joinery, Bavaria
One-off side table / bench, c. 2012**

H. 60 x 184 x 34 cm. Solid wenge wood, oiled. With a drawer. Image online.
€ 600 - 700



807



809

806

Naoto Fukasawa
'Demetra Professional Lettura' floor lamp, 2013

H. 91.5 cm (max.). Made by Artemide, Milan. Aluminum, painted dark gray. Marked: manufacturer's stamp.

Image online.

€ 300 - 400

807

Ilaria Marelli
'Ara Terra' floor lamp, 2013

H. 178 cm. Made by Nemo, Milan. Sheet aluminum, painted gray and white, plastic, matt white. Marked: manufacturer's label.

€ 400 - 500

808

Yuya Ushida
'XXXX_Stool', c. 2010

H. 45 cm, Ø 40 cm - H. 64 cm, Ø 18.5 cm. Made by Ahrendt, Sint-Oedenrode. Black plastic. Marked: Manufacturer's mark.

In original cardboard box.

€ 1.500 - 2.000

809

Rob Zinn
'Concentric S Corona' wall light, 2016

Ø 61 cm. Made by Marset, Barcelona. Sheet metal, white, vinyl, multicolored.

€ 1.000 - 1.200



808



IMPRESS

MANAGING DIRECTOR AND AUCTIONEER:

Askan Quittenbaum
+49 89 273702-113
a.quittenbaum@quittenbaum.de

DEPUTY MANAGING DIRECTOR:

Dr. Claudia Quittenbaum
+49 89 273702-111
c.quittenbaum@quittenbaum.de

SPECIALISTS:

Arthur Floss, Dipl. Betriebswirt FH
Leitung Modernes Design
+49 89 273702-110
arthur.floss@quittenbaum.de

Faridah Younès M.A.
+49 89 273702-115
faridah.younes@quittenbaum.de

JUNIOR SPECIALISTS:

Carina Schlager M.A.
+49 89 273702-10
c.schlager@quittenbaum.de

Elizaveta Leongardt B.A.
+49 89 273702-10
e.leongardt@quittenbaum.de

Veit Volwahren M.A.
+49 89 273702-112
veit.volwahren@quittenbaum.de

BOOK KEEPING:

Alicja Wika
+49 89 273702-117
alicja.wika@quittenbaum.de

CATALOGUE ORDER:

Annette Ehrenhardt
+49 89 273702-120
buchhaltung@quittenbaum.de

LOGISTIC AND SHIPPING:

Dirk Driemeyer
+49 89 273702-112
dirk.driemeyer@quittenbaum.de

M2 Logistik
+49 8121 223015
service@m2logistik.de

PHOTOGRAPHS:

Jochen Splett
Mirco Talierno

DESIGN:

Daniela Paringer,
design & print GbR

PRODUCTION AND PRINT:

G. Peschke Druckerei GmbH,
München





QUITTENBAUM

Kunstauktionen München

QUITTENBAUM Kunstauktionen GmbH
Theresienstrasse 60 · D-80333 Munich
Phone 089-27370210 · Fax 089-273702122
info@quittenbaum.de · www.quittenbaum.de

