

QUITTENBAUM

Kunstauktionen München

ART NOUVEAU

ART DECO

Auction 176 C
04 December 2024





ART NOUVEAU AND ART DECO

AUCTION 176 C

WEDNESDAY, 04 DECEMBER 2024

4 P.M.

**PREVIEW:
THERESIENSTR. 60**

Thursday	28.11.	10 a.m. - 6 p.m.
Friday	29.11.	10 a.m. - 6 p.m.
Saturday	30.11.	1 p.m. - 5 p.m.
Sunday	01.12.	1 p.m. - 5 p.m.
Monday	02.12.	10 a.m. - 6 p.m.

**QUITTENBAUM
Kunstauktionen GmbH**

Managing Director: Askan Quittenbaum
Theresienstrasse 60 · D-80333 Munich
Phone (+49) 89-27 37 02 10
Fax (+49) 89-27 37 02 122
E-Mail info@quittenbaum.de
Opening hours: Tuesday - Friday
10 a.m. - 1 p.m. and 3 p.m. - 6 p.m.
and by appointment



Mitglied der Initiative
Datenbank
kritischer Werke



Bundesverband Deutscher Kunstversteigerer e.V.

359

Gabriel Argy-Rousseau
Vase 'Sorbier', 1915

H. 6.6 cm. Pâte de verre, translucent glass, predominantly colorless, pink, green and violet. Slightly embossed decoration with rowan berries. Signed: G. ARGY-ROUSSEAU, on the base: FRANCE (embossed).

Bloch-Dermant, G. Argy-Rousseau, Paris 1990, no. 15.02.

€ 1.000 - 1.600

360

Gabriel Argy-Rousseau
Vase 'Fleurs violettes', 1920

H. 13.5 cm. Pâte de verre, colorless, violet, brown and green. Signed: G. ARGY-ROUSSEAU (recessed).

Air bubbles formed on one side due to manufacturing.

Cf. Bloch-Dermant, G. Argy-Rousseau, Paris 1990, No. 20.11 ('Fleurs jaunes').

€ 1.400 - 2.400



359



361

361

Gabriel Argy-Rousseau
'Papillon' pendant, 1924

5.7 x 5.5 cm. Pâte de verre, translucent glass, mold-melted, predominantly colorless, green, violet and opaque white. Signed: GAR (embossed).

Three drill holes.

Bloch-Dermant, G. Argy-Rousseau, Paris 1990, No. 24.37.

€ 800 - 1.200



360



362

Gabriel Argy-Rousseau
Footed bowl, c. 1927

H. 13 cm, Ø 15 cm. Pâte de verre, mold-melted, colorless, vanilla yellow, yellow, brown and white. Signed: G. ARGY-ROUSSEAU.

€ 3.000 - 4.000



363

Daum Frères, Nancy
Heraldic Vase, c. 1892

H. 12.3 cm. Cased glass, colorless, relief motif of a rising lion against a rough background with fleur-de-lys, gold-plated and enameled in camaïeu red and white. Base signed: Daum Nancy, Lorraine Cross (gold signature).

Cf. cat. Daum Collection du Musée des Beaux-Arts de Nancy, Paris 2000, No. 182.
€ 1.300 - 1.600

364

Daum Frères, Nancy
Vase 'Bleuets' with silver mounting, 1900-03

H. 9.8 cm. Cased glass, milky opalescent, colorless and violet. Etched decoration with cornflowers, the background worked in Martelé cut. Signed on base: DAUM NANCY, Cross of Lorraine (engraved). Stamped on base: Head of Minerva.

€ 1.800 - 2.400

365

Daum Frères, Nancy
Miniature vase 'Paysage en hiver', 1900-05

H. 4.1 cm. Cased glass, colorless, with pink, orange and dark brown powder inclusions. Etched decoration, heightened with black solder and white enamel. Winter forest landscape, snow-covered trees in the changing light of the setting sun. Signed on the base: Daum Nancy, Lorraine Cross (black solder).

€ 500 - 600

364

366

Daum Frères, Nancy
Soliflor 'Coquelicot', c. 1900

H. 12.3 cm. Cased glass, colorless, lemon yellow and auburn powder inclusions. Etched, enameled and heightened with gold. Decor of a meadow landscape with flowering poppies in different stages of growth. Signed on the base: Daum Nancy, Lorraine Cross (gold signature).

€ 1.000 - 1.500

367

Daum Frères, Nancy
Soliflor 'Coquelicot', c. 1900

H. 12.3 cm. Cased glass, colorless, lemon yellow and auburn powder inclusions in the lower wall area, etched, enameled and heightened with gold. Decor of a meadow landscape with flowering poppies in different stages of growth. Signed on the base: Daum Nancy, Lorraine Cross (residue of gold signature).

€ 1.000 - 1.500

365

368

Daum Frères, Nancy
Soliflor 'Coquelicot', c. 1900

H. 13.8 cm. Cased glass, colorless, lemon yellow and auburn powder inclusions in the lower wall area, etched, enameled and heightened with gold. Decor of a meadow landscape with flowering poppies in different stages of growth. Signed on the base: Daum Nancy, Lorraine Cross (gold signature).

€ 1.000 - 1.500

369

Daum Frères, Nancy
Goblet 'Eschscholzia', c. 1900

H. 9.6 cm, Ø 9.5 cm. Cased glass, colorless, yellowish and pink powder inclusions. Etched and enameled. Decoration with Californian gold poppies, two flowers as partial applications, finely engraved with the wheel (plaquettes gravées à la roue). Foot signed: DAUM NANCY, Cross of Lorraine (engraved).

Cf. cat. Collection Daum, Tokyo 1987, No. 88.

€ 1.000 - 1.300



366

367

368



369

370

370

Henri Bergé
Miniature vase 'Pluviose' - 'Une Pluie', c. 1900

H. 3.8 cm. Execution: Daum Frères, Nancy. Cased glass, pink and light green powder inclusions. Etched and heightened with black solder. Decoration with bare birch trees bowing under a spring shower. Signed on the bottom: Daum Nancy, Cross of Lorraine, AR (residue of black solder).

Cf. Ricke/Schmitt, Glass coll. Gerda Koepff, Kunstmuseum Düsseldorf, Munich 1998, No. 90.

€ 900 - 1.200

371

Daum Frères, Nancy
Tall vase 'Pavots' with silver mounting, c. 1900

H. 24 cm. Cased glass, colorless, opal white and green, partially reworked with the wheel. Etched decoration with poppies, heightened with gold. Signed on the base: DAUM, Cross of Lorraine, NANCY (engraved and rubbed with gold). Silver mounting on the lip shoulder and foot. Stamped: Head of Minerva.

€ 1.500 - 1.800

371



372

373

372**Daum Frères, Nancy****Vase 'Crépuscule neige' or 'Paysage hiver', c. 1902**

H. 10 cm. Cased glass, colorless, with yellow, orange and dark brown powder inclusions. Etched, enameled and heightened with black solder. Decoration with a winter forest landscape, snow-covered trees in the changing light of the setting sun. Signed on the base: Daum Nancy, Lorraine Cross, OM (black solder).

€ 450 - 550**373****Daum Frères, Nancy****Miniature vase 'Paysage en été', c. 1903-05**

H. 9.5 cm. Cased glass, colorless, opal white streaks. Etched, enameled and heightened with black solder. Decoration with a summer meadow landscape with a group of trees. Signed on the base: Daum Nancy, Lorraine Cross, Nancy (black solder).

€ 800 - 1.200**374****Daum Frères, Nancy****Vase 'Pommes d'api', 1905-10**

H. 19.5 cm. Cased glass, violet and orange powder inclusions. Etched and enameled decoration with Rossdorf apples in a morning mood. Signed: DAUM NANCY, Lorraine Cross (black solder).

€ 1.200 - 1.600

374

375**Daum Frères, Nancy****Tall vase 'au bouleaux en automne', 1905**

H. 36.5 cm. Cased glass, clear, light blue, yellow and dark blue. Green, yellow and brown enamel (Vitrifications). Etched Impressionist decoration with birch trees in an autumn landscape. Signed on the base: Daum Nancy, Cross of Lorraine (engraved). Bardin, Daum une industrie d'art lorraine, Metz 2004, p. 165.

€ 8.000 - 12.000



376

Henri Bergé
Vase 'Montbretias', 1905-10

H. 19.3 cm. Execution: Daum Frères, Nancy. Cased glass, colorless, with milk white, light yellow and amber brown powder inclusions. Etched and enameled decoration with flowering montbretias (*Crococsmia crocosmiflora*) on a rough background. Signed: DAUM NANCY, Lorraine Cross, FRANCE (raised and green).

Bardin, *Daum une industrie d'art lorraine*, Metz 2004, p. 91 (sketch by Henri Bergé).

€ 1.500 - 2.500

377

Daum Frères, Nancy
Small Vase 'Paysage en automne', 1905-10

H. 13 cm. Cased glass, colorless, white and yellow-green powder inclusions. Etched and enameled decoration with an autumnal meadow landscape. Signed on the base: DAUM NANCY, Cross of Lorraine (black solder).

€ 2.200 - 2.800

378

Daum Frères, Nancy
Small vase 'Violettes', c. 1905

H. 8.3 cm. Cased glass, colorless, milk white and blue powder inclusions. Etched and enameled decoration with flowering violets, leaves heightened with gold. Signed on the base: DAUM NANCY, Cross of Lorraine (gold signature).

€ 600 - 800

376



377

378



380

379

Daum Frères, Nancy
Vase 'Pervenches', 1905-10

H. 23.4 cm. Cased glass, colorless, opal white, vanilla yellow and pink powder inclusions, light green and reddish brown enamel fusions, partial light blue overlays, decoration largely engraved with a wheel in high cut with small evergreens, the blue overlays engraved (plaquettes gravées à la roue). Signed: DAUM NANCY, Cross of Lorraine (engraved).

€ 1.600 - 2.200

380

Daum Frères, Nancy
Centerpiece 'Volubilis', 1905-10

H. 19.5 cm, Ø 24 cm. Cased glass, colorless, yellowish and pink powder inclusions. Etched and enameled decoration with bindweeds, two flowers as partial overlays, finely engraved with the wheel (plaquettes gravées à la roue). Foot enameled orange-violet. Foot signed: DAUM NANCY, Lorraine Cross (engraved).

€ 2.600 - 3.200



379



381

381
Daum Frères, Nancy
Bowl 'Ronces en automne', 1910-15

H. 11.5 cm, 43 x 28 cm. Cased glass, colorless and opal white, enamel fusions orange and yellow. Etched decoration with autumnal thorn branches. Sign.: DAUM NANCY, Lorraine Cross (raised).
 € 2.800 - 3.200

382
Daum Frères, Nancy
Tall Berluzze 'Mûres en Automne', c. 1910

H. 60 cm. Cased glass, colorless, wine-red and yellow-green powder inclusions, enamel fusion, predominantly violet, auburn and green. Etched decoration with autumnal blackberry branches. Signed: DAUM NANCY, Lorraine Cross (raised).
 € 2.500 - 3.500

383
Daum Frères, Nancy
Miniature vase 'Coeur de Jeanette', c. 1910

H. 7.9 cm. Cased glass, colorless, pink and amber powder inclusions. Etched and enameled decoration with panicles of the bleeding heart. Signed: DAUM NANCY, Cross of Lorraine (raised).
 € 500 - 700



383



382

384
Daum Frères, Nancy
Table light with bronze base, c. 1910

H. 45 cm, Ø 31 cm. Cased glass, colorless, emerald green and violet, powder fusion, whitish and green marbled, so-called 'Pâte grise'. Etched decoration with leaves. Signed in one leaf: DAUM, Cross of Lorraine, NANCY (engraved). Bronze base, gold-plated. Signed: Geo Printemp (!), foundry mark JOLLET & CIE ANC. MON COLIN & CIE BRONZES PARIS.

€ 4.000 - 5.000



385

Daum Frères, Nancy
Ceiling light with dragonflies, c. 1910

Central bowl with three bell-shaped spouts. Frame made of three dragonfly bodies. H. 60 cm, Ø 77 cm. Cased glass, colorless, yellow and orange powder inclusions, frosted. Not signed. Gilded bronze frame with opal white glass cabochons.

€ 4.000 - 5.000



385

386

Daum Frères, Nancy
'Eucalyptus' table light, c. 1912

H. 37 cm. Lamp shade in cased glass, colorless, red and green, with yellow and red powder inclusions. Etched decor with eucalyptus branches with flowers and fruits. Signed: DAUM NANCY, Cross of Lorraine (engraved). Cast brass.

€ 600 - 800

387

Daum Frères, Nancy
Table light 'Eucalyptus', c. 1912

H. 48 cm. Lampshade made of cased glass, colorless, red and green, with yellow and red powder inclusions. Etched decoration with eucalyptus branches with flowers and fruit. Sign.: DAUM NANCY, Cross of Lorraine (engraved). Brass base.

€ 1.200 - 1.800



386

387

388

Daum Frères, Nancy
Tall vase 'Eucalyptus', c. 1913

H. 41 cm. Cased glass, colorless, lemon yellow and orange powder inclusions, deep reddish brown and dark green enamel fusions (Vitrifications). Etched decoration with eucalyptus branches in the strongly changing light of the setting sun. Signed: DAUM NANCY, Lorraine Cross (raised). Cf. exh. cat. Daum Nancy, verre & cristal d'art, 4e exposition Nancy Musée des Beaux-Arts 1980, No. 23.

€ 1.400 - 2.400

389

Daum Frères, Nancy
Miniature vase, 1918-25

H. 4 cm. Colorless glass, yellow-green, streaky powder inclusions. Signed on the base: Daum, Lorraine Cross, Nancy (black solder). Image online.

€ 240 - 340

390

Daum Frères, Nancy
Table light, c. 1920

H. 38.5 cm. Cased glass, colorless, red and orange powder inclusions, matted. Signed: DAUM, Cross of Lorraine, Nancy (engraved). Polished bronze base.

€ 600 - 800

391

Verrerie de Belle-Etoile Daum et Cie. Croismare (ATTR.)
Tall vase, c. 1922

H. 36.7 cm. Cased glass, colorless, opal white, orange and raspberry red powder inclusions, matted. Base dark violet. Not signed.

Image online.

€ 250 - 350

392

Daum Frères, Nancy
Vase and bowl 'Jades', c. 1925

H. 6.4 cm, Ø 10.5 cm, H. 17.2 cm. Cased glass, colorless, predominantly light and dark blue powder inclusions and burst precious metal foil. Signed: DAUM, Lorraine Cross, NANCY (engraved).

Image online.

€ 300 - 400

393

Daum Frères, Nancy
Vase, 1930s

H. 20 cm. Smoke-brown tinted glass. Sign.: Daum Lorraine Cross Nancy France (engraved).

Image online.

€ 200 - 300

394

Daum Frères, Nancy
Small 'Jades' vase, 1930s

H. 11.5 cm. Cased glass, colorless, milk white, dark blue and violet with burst precious metal foil inclusions. Stand signed: DAUM, Lorraine Cross, NANCY FRANCE (needle engraving).

Image online.

€ 220 - 320

395

Daum Frères, Nancy
Vase, 1930s

H. 24 cm. Thick-walled brown glass, cut. Signed: DAUM NANCY, Lorraine Cross FRANCE (needle etching).

Image online.

€ 200 - 300

396

Daum Frères, Nancy
Vase, 1930s

H. 19.2 cm. Thick-walled brown glass, ten-sided cut. Signed: DAUM NANCY, Lorraine Cross FRANCE (needle etching).

Image online.

€ 200 - 300

388



390

397

Emile Gallé, Nancy
Japonizing vase, 1878-85

H. 29.6 cm. Distributed by: Ernest Lèveillé, Paris. Colorless glass. Vase with two applied mythical creatures crawling up the wall; base and vase with engraved fish between stylized chrysanthemums in a Japanese style. Base signed on the side: E. Gallé à Nancy (engraved). Vase marked on the base: E. Lèveillé ... 10 rue de la Passe Paris (engraved). Helga Hilschenz-Mlynek refers to the relationship between Gallé and Lèveillé: '(...) In his shop he offers glasses by Emile Gallé, among others. (...)', cf. Hilschenz-Mlynek/Ricke, Glassammlung Henrich, Kunstmuseum Düsseldorf, Munich 1985, p. 307. In the 'Petit palais, musée des Beaux-arts de la ville de Paris' a vase of the same shape with enamel painting was exhibited. See Rago auction of July 11, 2024: Vase of the same shape with enamel painting by Emile Gallé; Christie's auction, London of October 30, 2013: Vase of identical shape with enamel painting by Emile Gallé.

€ 4.500 - 6.500



398

Emile Gallé, Nancy
Wine glass, 1884

H. 11.8 cm. Slightly brownish glass. Cut volute decoration. Stem and base with brown, black and blue stylized floral enamel. Signed: Emile Gallé à Nancy 1884 (engraved). Letters engraved within the volutes.

Cf. Exh. cat. Emile Gallé et le Verre, la Collection du Musée de l'Ecole de Nancy, Paris 2004, No. 79.

€ 700 - 800



398

399

Emile Gallé, Nancy
Vase 'Marguerites', 1890-94

H. 33.8 cm. Colorless, twisted blown glass, etched, engraved and enameled decoration with daisies, gold highlights. Signed: Gallé (raised).

Exh. cat. Emile Gallé et le Verre, la Collection du Musée de l'Ecole de Nancy, 2004, p. 118, No. 166.

€ 2.200 - 2.600



400

400

Emile Gallé, Nancy
Bowl 'Magnolias', 1895/96

H. 11.6 cm, Ø 22.2 cm. Cased glass, colorless, opal white and pink, greenish efflorescence of precious metal salts. Etched and reworked with the wheel. Decoration with blossoming magnolias. Ground in Martelé cut. Base signed: Cristallerie d'E Gallé Nancy (embossed), 15 (engraved).

€ 1.200 - 1.600



399

401

Emile Gallé, Nancy
Vase 'Raisins', c. 1895

H. 30.1 cm. Cased glass, colorless, pink and orange. Etched decoration with grape tendrils, fire polished. Base signed: Gallé Nancy (engraved).

€ 1.600 - 2.200

402

Emile Gallé, Nancy
Vase 'Raisins', c. 1895

H. 36 cm. Cased glass, colorless, opalescent white and amber brown. Etched decoration with grape tendrils, fire polished. Signed: Gallé (recessed).

Exh. cat. Emile Gallé et le Verre, la Collection du Musée de l'Ecole de Nancy, 2004, p. 125, No. 185.

€ 1.600 - 2.200

401

402



403

403
Emile Gallé, Nancy
Vase 'Tournesol', 1898

H. 34.5 cm. Cased glass, colorless and dark amber. Etched decoration with sunflower, a large flower backed with gold foil and decorated with a green and a violet cabochon, the sun below the top rim. Signed on the base: Gallé déposé (needle etching in a stylized flower).

In 1898, a design protection application was made in Nancy for the decoration with applied cabochons and rising sun. Reproduction of the drawing: Hilschenz-Mlynek/Ricke, Hentrich Glass Collection, Kunstmuseum Düsseldorf, Munich 1985, No. 238 (one version in the Bröhan Museum, Berlin, Vol. II, 1, No. 18).

€ 3.200 - 3.800

404
Emile Gallé, Nancy
Vase 'Tournesol', 1898

H. 35 cm. Cased glass, colorless and dark amber. Etched decoration with sunflower, a large flower backed with gold foil and decorated with a green and a violet cabochon. Signed on the base: Gallé déposé (needle etching in a stylized flower).

In 1898, a design protection application was made in Nancy for the decoration with applied cabochons and rising sun. Reproduction of the drawing: Hilschenz-Mlynek/Ricke, Glassammlung Hentrich, Kunstmuseum Düsseldorf, Munich 1985, No. 238 (one version in the Bröhan Museum, Berlin, Vol. II, 1, No. 18).

€ 5.000 - 5.500



404



406

406
Emile Gallé, Nancy
Vase 'Chèvrefeuille', c. 1898

H. 15 cm. Cased glass, colorless and greenish, etched, enameled and gilded. Decorated with honeysuckle and other plants. Signed: Gallé (raised).

€ 2.200 - 2.600

407
Emile Gallé, Nancy
'Etude' vase 'Lys', c. 1900

H. 13 cm. Cased glass, colorless and violet, lily blossoms intaglio and cameo cut. Signed: Gallé Etude (engraved).

Image online.

€ 900 - 1.200

408
Emile Gallé, Nancy
'Primevère' bowl, 1900-04

H. 9.5 cm, Ø 19.7 cm. Cased glass, colorless, opal white and pink-violet. Etched decoration with primroses. Signed: Gallé (raised).

Cf. Exh. cat. Emile Gallé et le Verre, la Collection du Musée de l'Ecole de Nancy, Paris 2004, no. 292.

€ 800 - 1.000

409
Emile Gallé, Nancy
Vase 'Dahlias', c. 1900

H. 23.3 cm. Cased glass, opal light green, colorless and brown. Etched decoration with flowering dahlias, the inner wall matt etched. Sign.: Gallé (raised).

€ 1.400 - 1.800

405
Emile Gallé, Nancy
Vase 'Pavots', c. 1898

H. 45.5 cm. Cased glass, colorless, opal white and orange. Etched decoration with poppies. Fire polished. Signed: Gallé (raised).

€ 800 - 1.200



409



405



408

410

Emile Gallé, Nancy
Vase 'Perce-neige', 1902-04

Long teardrop shape. H. 30 cm. Cased glass, clear, blue-white marbled and opalescent with yellowish shimmer. Completely wheel-cut decoration with blooming snowdrops on a snow-covered ground. Signed: Gallé (engraved).

€ 10.000 - 12.000



411

Etablissements Gallé, Nancy
Vase 'Erable à feuilles de frêne', presumably 1905-08

H. 10 cm. Cased glass, colorless, pink, milk white, yellowish and green. Etched decoration with climbing branches of the ash-leaved maple. Signed: Gallé (raised).

Image online.

€ 250 - 350

412

Etablissements Gallé, Nancy
Tall vase 'Hortensias', 1905-08

H. 44 cm. Cased glass, colorless, milk white, salmon pink, violet and green. Etched decoration with flowering hydrangeas. Signed: Gallé with star (raised).

€ 700 - 900

413

Etablissements Gallé, Nancy
Large 'Egg' 'Fuchsias', 1905-08

H. 24.5 cm. Cased glass, colorless, opal white and violet. Etched decoration with fuchsia branches. Signed: Gallé with star (raised).

€ 1.200 - 1.400

414

Etablissements Gallé, Nancy
'Egg' 'Eucalyptus', 1905-08

H. 20 cm. Cased glass, colorless, opal white and green. Etched decoration with eucalyptus branches. Signed: Gallé with star (raised).

€ 1.200 - 1.400



412



413



414



415

415**Etablissements Gallé, Nancy
Soliflor 'Chardons', 1905-08**

H. 30.5 cm. Cased glass, salmon pink, colorless and green. Matt-etched decoration with thistle blossoms. Signed: Gallé with star (raised).

Exh. cat. Emile Gallé et le Verre, la Collection du Musée de l'Ecole de Nancy, Paris 2004, No. 322.

€ 800 - 1.200

416**Etablissements Gallé, Nancy
Centerpiece 'Roses', 1908-20**

H. 21 cm, Ø 19 cm. Cased glass, colorless, opal white, yellow and dark red. Etched decoration with rose tendrils in the evening. Signed: Gallé (raised).

€ 1.000 - 1.500

417**Etablissements Gallé, Nancy
Vase 'Nénuphars et sagittaire avec
Libellules', 1908-20**

H. 25 cm. Cased glass, colorless, opal white and violet. Etched decoration with an evening pond landscape with water lilies, arrowheads and two flying dragonflies. Signed: Gallé (raised).

€ 1.800 - 2.600

418**Etablissements Gallé, Nancy
Soliflor 'Paysage des Vosges',
1908-20**

H. 17 cm. Cased glass, colorless, opal white, blue and violet. Etched decoration of a Vosges landscape with a lake. Signed: Gallé (raised).

€ 600 - 800

**419****Etablissements Gallé, Nancy
Tall table light 'Pensées', 1908-20**

H. 67 cm, Ø 30 cm. Cased glass, colorless, yellow and violet. Etched decoration with a type of violet flower. Shade and base each signed: Gallé (raised).

€ 9.000 - 12.000



416



417



418



421

420
Etablissements Gallé, Nancy
Small vase 'Capucines', 1908-20

H. 6 cm. Cased glass, colorless, pink, opaque white and amber. Etched decoration with nasturtium tendrils. Signed: Gallé (raised). Image online.
€ 250 - 300

421
Etablissements Gallé, Nancy
Tall Vase 'La ligne bleue des Vosges', 1914-18

H. 57 cm. Cased glass, colorless, light amber yellow, blue and deep violet. Etched decoration with a Vosges landscape and a backdrop of trees. Signed: Gallé (raised).
€ 4.500 - 6.500



422



423

422
Etablissements Gallé, Nancy
Vase 'Prunelles', 1920-36

H. 25.8 cm. Cased glass, colorless, yellow and violet. Etched decoration with sloe branches in the changing light of the setting sun, berries partially highlighted on the inside by etching. Signed: Gallé (raised). Hilschenz-Mlynek/Ricke, Hentrich Glass Collection, Kunstmuseum Düsseldorf, Munich 1985, no. 366.
€ 500 - 600

423
Etablissements Gallé, Nancy
Vase 'Cyclamens', 1920-36

H. 14.5 cm. Cased glass, colorless, lemon yellow and wine red. Etched decoration with blooming cyclamens in an evening mood. Signed: Gallé (raised).
€ 800 - 1.200



424

424
Etablissements Gallé, Nancy
Huge vase 'Trompettes de Virginie', 1920-36

H. 38 cm. Cased glass, colorless, amber brown and wine red. Etched decoration with American trumpet in the light of the setting sun, the flowers highlighted through etching on the inner wall. Signed: Gallé (raised).
€ 7.000 - 8.000

425
Etablissements Gallé, Nancy
Huge Vase 'Clematis', 1925-36

H. 41.5 cm. Cased glass, light amber opalescent, colorless, violet and blue. Etched decoration with clematis tendrils in an evening mood. Signed: Gallé (raised).
€ 5.000 - 6.000



425

426
Etablissements Gallé, Nancy
Bowl 'Erable à feuilles de frêne', 1928-36

H. 11.2 cm, Ø 22 cm. Cased glass, colorless, pink, milk white, yellowish and green. Etched decoration with climbing branches of the ash-leaved maple. Signed: Gallé (raised). Cf. Hilschenz-Mlynek/Ricke, Glass coll. Hentrich, Kunstmuseum Düsseldorf, Munich 1985, p. 251, No. 335.
€ 800 - 1.200



426



427

427

René Lalique
Vase 'Plumes', 1920

H. 21.2 cm. Execution: Lalique, Wingen-sur-Moder, after 1947. Glass, colorless, opalescent white. Sign.: LALIQUE (cast or engraved).

Marcilhac, René Lalique, Paris 2011, No. 944.

€ 1.000 - 1.500

428

René Lalique
Bowl 'Martigues', 1920

Ø 36.5 cm. Execution: Lalique, Wingen-sur-Moder, before 1947. Butterscotch yellow opalescent pressed glass. Sign: R.LALIQUE (cast with the glass), FRANCE No. 377 (engraved).

Marcilhac, René Lalique, Paris 2011, No. 377.

€ 1.600 - 2.600

429

René Lalique
'Quatre Flacons' box for Houbigant, 1921

H. 5 cm, Ø 14 cm. Execution: Lalique, Wingen-sur-Moder, before 1947. Colorless pressed glass, slightly opalescent, fabric, cardboard. Bottles, H. 5.6 cm, made of colorless glass. Sign.: R. LALIQUE (cast with the bottle). Three bottles with remnants of paper labels.

Stopper of one of the bottles is lost.

Marcilhac, René Lalique, Paris 2011, S. 969, HOUBIGANT-1.

€ 400 - 500

430

René Lalique
Vase 'Néfliers', 1923

H. 14.2 cm. Execution: Lalique, Wingen-sur-Moder, before 1947. Colorless, mold-blown glass, satin finish, grayish patina. Signed: R. LALIQUE (cast with the glass).

Marcilhac, René Lalique, Paris 2011, No. 940.

€ 600 - 800

431

René Lalique
Bowl 'Lys', 1924

H. 12.5 cm, Ø 23.9 cm. Execution: René Lalique, Wingen-sur-Moder, before 1947. Colorless pressed glass, slightly opalescent. Signed: R. LALIQUE (cast with the glass), R. LALIQUE FRANCE (mirror-inverted, engraved).

Marcilhac, René Lalique, Paris 2011, No. 382.

€ 650 - 850



428

429



432

René Lalique
Vase 'Malines', 1924

H. 11.8 cm. Execution: Lalique, Wingen-sur-Moder, before 1947. Colorless mold-blown glass, partially satined. Signed: R. LALIQUE (cast with the glass).

Marcilhac, René Lalique, Paris 2011, No. 957.

Image online.

€ 400 - 600

433

René Lalique
Three ashtrays 'Fauvettes', 1924, 'Canard', 1925 and 'Dahlia', 1931

Ø 17.5 cm, H. 6.5 cm, Ø 9 cm, Ø 8 cm. Execution: Lalique, Wingen-sur-Moder, before 1947. Pressed glass, partially satined and patinated. Sign.: R. LALIQUE (FRANCE) (cast with the piece), or R. Lalique France No. 283 (black solder).

€ 600 - 800

434

René Lalique
Vase 'Eucalyptus', 1925

H. 16.2 cm. Execution: Lalique, Wingen-sur-Moder, before 1947. Colorless pressed glass, satin finish. Signed: R. LALIQUE (cast with the glass).

Marcilhac, René Lalique, Paris 2011, No. 936.

€ 1.000 - 1.500



430

431

433

434





435

435

René Lalique
'Danaïdes' vase, 1926

H. 18.1 cm. Execution: René Lalique, Wingen-sur-Moder. Colorless pressed glass, slightly opalescent. Signed on base: R. LALIQUE FRANCE (sandblasted).

Marcilhac, René Lalique, Paris 2011, No. 972.

€ 4.000 - 5.000

436

René Lalique
Paperweight 'Coq nain', 1928

H. 19.7 cm. Execution: Lalique, Wingen-sur-Moder, before 1947. Topaz gray pressed glass. Signed: R. LALIQUE FRANCE (raised in the mould), N° 1135 (engraved).

Marcilhac, René Lalique, Paris 2011, No. 1135.

€ 1.500 - 2.500



436



438

437

René Lalique
Bowl 'Mont-Dore', 1928

H. 7.5 cm, Ø 22 cm. Execution: Lalique, Wingen-sur-Moder, before 1947. Colorless pressed glass, partially satin-finished. Sign.: R. LALIQUE FRANCE (embossed).

Marcilhac, René Lalique, Paris 2011, No. 396.

Image online.

€ 300 - 400

438

René Lalique
Vase 'Coqs et Plumes', 1928

H. 15.4 cm. Execution: Lalique, Wingen-sur-Moder, before 1947. Colorless pressed glass, partially satin-finished and patinated gray. Signed: R. LALIQUE FRANCE (sandblasted).

Marcilhac, René Lalique, Paris 2011, No. 1033.

€ 1.200 - 1.600

439

René Lalique
Bowl 'Nemours', 1929

Ø 25.5 cm. Execution: Lalique, Wingen-sur-Moder, after 1978. Colorless pressed glass, partially satin-finished, black enamel. Signed: Lalique France (engraved).

Marcilhac, René Lalique, Paris 2011, No. 404.

€ 400 - 600

440

René Lalique
Radiator mascot / Paperweight
'Perche', 1929

H. 9.5 cm, L. 15.8 cm. Execution: Lalique, Wingen-sur-Moder, after 1947. Colorless pressed glass, satin finish, blue-gray patina. Signed: LALIQUE FRANCE (sandblasted).

Marcilhac, René Lalique, Paris 2011, No. 1158.

€ 400 - 600



439



440



441

441

René Lalique
'Côte d'Azur', 1929

Naked female figure in the wind of speed. H. 16.5 cm. Execution: Lalique, Wingen-sur-Moder, 1929. Colorless pressed glass, satin finish. Plinth marked: LW, CÔTE D'AZUR PULLMAN EXPRESS, additional signet, 9 DECEMBRE 1929 (cast with the glass) R. LALIQUE (stamped). Special production to mark the introduction of Pullman sleeping cars on trains to southern France.

Marcilhac, René Lalique, Paris 2011, p. 396, no. E.

€ 3.000 - 4.000



442

443

444

445

442

René Lalique
Paperweights / Mascots 'Sanglier', 1929, 'Hibou', 1931, 'Bison', 1931

H. 6.3 cm, H. 8.5 cm, H. 9.3 cm. Execution: Lalique, Wingen-sur-Moder, after 1947 or after 1978 respectively. Colorless pressed glass, partially satined. Signed: LALIQUE FRANCE (sandblasted) or Lalique and Lalique France (engraved).

'Hibou' with burst air bubble on the head.

Marcilhac, René Lalique, Paris 2011, No. 1157 (Sanglier), No. 1181 (Hibou), No. 1196 (Bison).

€ 300 - 400

443

René Lalique
Bowl (coupe plate) 'Poissons No. 1', 1931

Ø 28.7 cm. Execution: René Lalique, Wingen-sur-Moder, before 1947. Colorless pressed glass, opalescent. Signed: R. LALIQUE FRANCE (sandblasted).

Marcilhac, René Lalique, Paris 2011, No. 3262.

€ 500 - 700

444

René Lalique
Two bottles and a box 'Mésanges', 1931

H. 8, 12.8 and 13 cm. Execution: Lalique, Wingen-sur-Moder, after 1947. Colorless pressed glass, birds in relief, satin finish. Marked: R. LALIQUE FRANCE (engraved).

Plugs cannot be opened.

Cf. Marcilhac, René Lalique, Paris 2011, No. 420.

€ 300 - 400

445

René Lalique
Vase 'Biches', 1932

H. 16.8 cm. Execution: Lalique, Wingen-sur-Moder, after 1947. Colorless, mold-blown glass, green patina. Signed on base: LALIQUE FRANCE (sandblasted).

Marcilhac, René Lalique, Paris 2011, No. 1082.

€ 500 - 700

446

René Lalique
Bowl 'Dauphins', 1932

H. 8.7 cm, Ø 28.3 cm. Execution: Lalique, Wingen-sur-Moder before 1947. Colorless pressed glass, slightly opalescent. Signed: R. LALIQUE FRANCE (sandblasted).

Marcilhac, René Lalique, Paris 2011, No. 424.

€ 600 - 800

447

René Lalique
Vase 'Rennes', 1933

H. 12.2 cm. Execution: Lalique, Wingen-sur-Moder, before 1947. Colorless pressed glass, partially satined, blue patina. Signed: R. LALIQUE FRANCE (sandblasted).

Marcilhac, René Lalique, Paris 2011, No. 10-875.

€ 1.000 - 1.500

448

René Lalique
Centerpiece 'Festons', 1939

Eight pieces. H. 4.8 cm, L. 50 cm. Execution: Lalique, Wingen-sur-Moder, before or after 1947, respectively. Colorless crystal glass, partially satined. Signed: LALIQUE FRANCE or R. LALIQUE FRANCE (sandblasted).

Marcilhac, René Lalique, Paris 2011, No. 10-3472/A-10-3472/B.

€ 400 - 600

449

Legras & Co., Saint-Denis
Vase 'Lamartine' - 'Marienbad', c. 1910

H. 11 cm. Cased glass, colorless, opal white and pink. Etched and enameled decoration with a tree-lined river landscape. Base marked: Marienbad (needle etching).

Image online.

€ 250 - 350



446

447

448

450

Eugène Rousseau
Vase 'Plat à tête de chimère', 1878-1880

H. 20.4 cm. Execution: Appert Frères, Clichy. Clear cased glass with wine-red streaks, metal foil and color inclusions. Full-surface engraved and cut decoration, underwater scene with large fish.

Ricke/Schmitt, Gerda Koepff Glass Collection, Kunstmuseum Düsseldorf, Munich 1998, p. 79, no. 2, p. 80, no. 3, another vase 'Plat à tête de chimère', without engraving and cut.

€ 5.000 - 6.000



451

451

Eugène Rousseau;
Ernest Baptiste Léveillé
Bowl, 1885-90

H. 7.7 cm, 26 x 21.5 cm. Colorless ice glass, rust-red and green/yellow oxide inclusions. Signed on base: E. Léveillé (engraved). Small chip on the inside edge of the mouth.
 € 2.500 - 3.500

452

Eugène Rousseau
Large vase, c. 1890

H. 18.5 cm. Smoke brown glass, craquelure, powder inclusions in opal white, red, yellow and green. Not signed.
 € 400 - 600

453

Eugène Rousseau;
Ernest Baptiste Léveillé
Vase, c. 1884

H. 14.8 cm. Violet ice glass, alkali white and rust red efflorescent oxide inclusions. Base signed: E. Léveillé Paris (engraved).
 € 1.000 - 1.500



452



453



454

Muller Frères, Luneville
Huge vase 'Lys tigré', c. 1925

H. 27.7 cm. Cased glass, colorless and claret red, green, blue and dark brown powder inclusions. Etched decoration with tiger lilies in different stages of flowering. Signed: MULLER FRÈS LUNÉVILLE (raised).

€ 3.500 - 4.500



455

455

Henri Muller, Croismare
Vase 'Iris', 1900-05

H. 26.1 cm. Cased glass, milk white, colorless and pink. Etched and wheel-worked decoration with flowering iris. Signed on base: elaborate signature H. Muller Croismare près Nancy with butterfly.

€ 2.000 - 2.500

456

Henri Muller, Croismare
Jug, 1900-05

Trumpet shape with irregularly pointed mouth and moving handle. H. 27 cm. Cased glass, yellowish and milky white, polychrome decoration with shepherdess in landscape in fluogravure technique. Signed on base: Muller Croismare (luster).

Hilschenz-Mlynek/Ricke, Hentrich Glass Collection, Kunstmuseum Düsseldorf, Munich 1985, No. 457 (form).

€ 2.800 - 3.400



456



457

457
Marius-Ernest Sabino
Figurative table light, c. 1930

H. 24.5 cm (with base). Molded glass, colorless and opalescent white. Signed: Sabino (needle engraving). Silvered bronze base, electrified.

€ 600 - 800

458
Schneider, Epinay-sur-Seine
'Raisins' vase, 1918-20

H. 15.5 cm, Ø 17.5 cm. Cased glass, colorless and orange, pink and violet enamel fusions. Etched decoration with grapes. Matted. Sign.: Le Verre Français (needle etching).

Joulin/Maier, Charles Schneider, Augsburg 2004, p. 98 (decor).

€ 800 - 1.200



458



459

459
Schneider, Epinay-sur-Seine
Vase 'Cerises', 1918-21

H. 10 cm, 19.5 x 10 cm. Cased glass, colorless, violet powder inclusions, red and brown enamel fusions. Etched decoration with cherries and leaves. Signed: Tricolor thread (for: le Verre Français).

Cf. Joulin/Maier, Charles Schneider, Munich 2020, p. 86.

€ 600 - 800

460
Schneider, Epinay-sur-Seine
Jardiniere 'Houx', 1918-21

H. 10.3 cm, 19.5 x 10 cm. Cased glass, colorless, pink powder inclusions. Enamel fusions in vanilla yellow. Etched decoration with holly. Marked: Tricolor thread for Le Verre Français.

Joulin/Maier, Charles Schneider, Augsburg 2020, p. 76.

Image online.

€ 350 - 450



461

461
Schneider, Epinay-sur-Seine
'Coupe bijou', 1920-22

H. 16 cm, Ø 18.5 cm. Glass, colorless, white, vanilla yellow and raspberry red powder inclusions, violet base. Base signed: SCHNEIDER (sandblasted).

€ 650 - 850

462
Schneider, Epinay-sur-Seine
Flacon 'Bijoux', 1921-25

H. 10.8 cm. Colorless glass, powder fusions in orange and dark blue. Signed: Schneider (needle etching).

Joulin/Maier, Charles Schneider, Augsburg 2004, p. 233.

€ 600 - 800

463
Schneider, Epinay-sur-Seine
'Bijou' Flask, 1922-25

H. 7.5 cm. Glass blown in front of the lamp. Applied ribbons in black and dots in orange. Signed: Schneider (needle engraving).

Cf. Joulin/Maier, Charles Schneider, Augsburg 2004, p. 236.

€ 2.500 - 3.000



462



463

464

**Schneider, Epinay-sur-Seine
'Amaranthes' goblet, 1923-26**

H. 21 cm, Ø 14 cm. Cased glass, colorless, yellowish powder inclusions, violet and pink enamel fusions. Etched decoration with amaranth flowers. Sign.: Le Verre Français (needle etching).

Joulin/Maier, Charles Schneider, Munich 2020, p. 128 (decor).

€ 1.000 - 1.500



464

465

**Schneider, Epinay-sur-Seine
'Groseilles' vase, 1923-26**

H. 20.5 cm. Cased glass, colorless, with lemon yellow powder inclusions. Enamel fusions, orange and violet. Etched decoration with currants. Signed: Le Verre Français (needle etching).

Joulin/Maier, Charles Schneider, Munich 2020, p. 130 (decor).

€ 800 - 1.200



465



466

466

**Schneider, Epinay-sur-Seine
'Papillons' Vase, 1923-26**

H. 19 cm, Ø 20 cm. Cased glass, colorless, white and turquoise powder inclusions, orange-red enamel fusions. Etched decoration with butterflies. Signed: Le Verre Français (needle etching).

Joulin/Maier, Charles Schneider, Augsburg 2004, p. 121.

€ 1.400 - 1.800

467

**Schneider, Epinay-sur-Seine
'Digitales' goblet, 1924-27**

H. 24.5 cm, Ø 17 cm. Cased glass, colorless with white and pink powder inclusions, orange and violet enamel fusion, applied handle with violet powders. Etched decoration with stylized foxglove. Signed: Le Verre Français (needle etching).

Cf. Joulin/Maier, Charles Schneider, Munich 2020, p. 160.

€ 1.200 - 1.800



467



468

468

**Schneider, Epinay-sur-Seine
Vase 'Yucca', 1925-27**

H. 13.5 cm. Cased glass, yellow powder inclusions, orange and brown enamel. Etched decoration with American palm lily. Foot signed: Le Verre Français (needle etching).

€ 800 - 1.200

469

**Schneider, Epinay-sur-Seine
'Vine' vase, 1927-28**

H. 35 cm. Colorless glass with yellow powder inclusions, brown and orange enamel fusions, neck marbled brown. Etched decoration with stylized grapes. Signed on the wall: Charder (raised), base: Le Verre Français (engraved).

Joulin/Maier, Charles Schneider, Munich 2020, p. 185 (decor).

€ 800 - 1.200

470

**Camille Tutré de Varreux, Cristallerie de Pantin
Jar 'Paysage', 1915-20**

H. 12.5 cm. Cased glass, light and dark blue, colorless and green. Etched decoration with mountain lake and tree backdrop. Sign.: de Vez (raised).

Image online.

€ 300 - 400

471

Val-Saint-Lambert Crystal Works, Seraing-sur-Meuse

Vase 'Orchidées', 1905-10

H. 36.3 cm. Cased glass, colorless, opal white and pink. Etched decoration with orchids. Sign.: VSL (raised).

€ 2.000 - 2.500



469



471



472



473



474

472

Henri Bergé
Vide poches 'Papillon de Nuit', c. 1925

H. 4.3 cm, 8 x 14 cm. Pâte de verre, translucent glass, molded, predominantly bluish, yellow and white, dark and light brown butterfly. Signed: AWALTER NANCY and HBergé sc. (recessed).

€ 1.200 - 1.600

473

Henry Mercier
Paperweight 'Moules', c. 1925

H. 3.9 cm. Execution: Amalric Walter, Nancy. Pâte de verre, slightly translucent glass mass, mold-melted, predominantly amber-yellow-greenish, dark gray fusion. Signed: AWALTER NANCY, HM (stamped).

€ 700 - 900

474

Albert Ernest Carrier-Belleuse
Bust of a young woman, c. 1865

H. 57 cm. Terracotta. Brown glazed plinth. Signed on the back: A. CARRIER BELLEUSE (incised). Collection label. Ebonized wooden base, turned.

Provenance: From the collection of Maria and Hans-Jürgen Heuser, Hamburg, no. 6110. The present bust, possibly a portrait of an actress, is related both in execution and in size to other female busts (probably allegories of the seasons), the first in the Musée d'Orsay, Paris 'Jeune femme au chapeau orné d'épis de blé', another was in the art trade, Washington DC 'Lady winter', with which there are particularly portrait similarities.

€ 4.500 - 5.500

475

Emile Decoeur, Paris
Tall vase, c. 1903

H. 44 cm. Stoneware, spotty green and brown glaze on a black background. Marked: E. Decoeur (lettering); collection label. Retouching to the edge of the stand and the lip.

Provenance: From the collection of Maria and Hans-Jürgen Heuser, Hamburg, no. 6065.

€ 2.400 - 3.200

476

Auguste Delaherche, Paris
Vase, 1886-1894

H. 7.7 cm. Stoneware, with whitish green, blue and brown glaze over red background. Marked: round manufacturer's mark, 4717 (embossed).

Provenance: From the collection of Maria and Hans-Jürgen Heuser, Hamburg, no. 162.

Image online.

€ 150 - 180

477

France
Two cats, c. 1884

H. 33.5 cm. Earthenware, whitish tin glaze, yellow and cobalt blue glazed with dot and heart-leaf shapes. Green-black glass eyes. Cf. Hakenjos, Keramik von Emile Gallé, Düsseldorf 1981, No. 207.

€ 1.200 - 1.800

478

France
Mustard pot with spoon, c. 1900

H. 7 cm, L. 9.5 cm. Stoneware, glazed green and dark red. Base illegibly signed. Silver mounting, partially gold-plated. Stamped: Minerva head.

Image online.

€ 250 - 350

479

Emile Gallé, Nancy; Faïencerie de St. Clement
Jar with mythical creature and stag beetles, c. 1876

H. 17 cm, 20 x 16.5 cm. Faïence, polychrome enamel on alkali white background, gold highlights. Lid and vessel signed: Gallé Nancy (camaieu red), vessel also: St. Clement (blue, under glaze).

Hakenjos, Keramik von Emile Gallé, Düsseldorf 1981, No. 54.

€ 1.500 - 2.000

480

Emile Gallé, Nancy; Faïencerie de St. Clement
Ink set, 1870s

H. 14 x 35 x 21 cm. Faïence, tin glaze, overglaze in red and gray, gold. Bowl marked: St Clément Gallé Nancy (gray). Base marked: manufacturer's stamp (blue, under glaze).

A few tiny chips, retouches.

Image online.

€ 400 - 600



475



477



479



481

481
Emile Gallé, Nancy
Owl, c. 1884

H. 33.5 cm. Brown faïence, overglaze in brown and alkali white. Green glass eyes. Signed on the base: E. Galle Nancy (black, handwritten).

Hakenjos, Keramik von Emile Gallé, Düsseldorf 1981, No. 223.

€ 4.500 - 5.500

482
Maurice Gensoli, Paris
Centaur, c. 1930

H. 28.8 cm. Faïence with whitish alkali glaze. Marked: manufacturer's mark, TV (embossed); collection label.

Provenance: From the collection of Maria and Hans-Jürgen Heuser, Hamburg, no. 5884.

Image online.

€ 700 - 900

483
Roger Guérin, Bouffouix
Vase, c. 1930

H. 15 cm. Stoneware with dark brown, greenish-crystallizing glaze over light brown background. Marked: Guérin 013 (incised), collection label.

Provenance: From the collection of Maria and Hans-Jürgen Heuser, Hamburg, no. 4975.

Image online.

€ 320 - 400

484
Roger Guérin, Bouffouix
Vase, c. 1930

H. 23.9 cm. Stoneware, matt glazed in shades of gray. Marked: Guérin 216/ E (incised); collection label.

Stand chipped in places.

Provenance: From the collection of Maria and Hans-Jürgen Heuser, Hamburg, no. P. 554/ P 46.

Image online.

€ 250 - 300

485
Georges Firmin Hoentschel, Paris
Tall Vase, c. 1895

H. 21.2 cm. Earthenware, running glaze in alkali white and gray-green over brown. Signed: artist's signet (embossed), faint numbers (incised).

Flat chip to the stand.

€ 1.600 - 2.600

486
Paul Jeanneney (alias Paul Loewenguth), Strasbourg
Small Vase, c. 1900

H. 9.8 cm. Stoneware, brown base glaze, whitish overflow glaze, heavy craquelure. Signed: Jeanneney -3- (incised).

€ 800 - 1.200

487
Keller & Guérin, Lunéville
Planter, 1895

H. 32.5 cm, Ø 30.5 cm. Earthenware, dark blue luster glaze with underwater scenery with fish; Red inside. Marked: K&G Lunéville 1895 (luster writing), K&G LUNÉVILLE (embossed), original paper label.

€ 900 - 1.200

488
Emile Lenoble, Choisy-le-Roi
Vase with geometric decoration, c. 1928

H. 13.5 cm. Stoneware, pigmented light beige and glazed green-gray, all-round stylized decoration. Marked: artist's signet Le, spiral, 23 S, 134 (incised), 232 (black, handwritten).

€ 800 - 1.200



485



486



487



488



489

489
Maurice Dufrene
Seven-piece coffee and tea service, c. 1900-03

Coffee pot, teapot, creamer, sugar bowl, coffee cup with saucer, tea cup with saucer. H. 4.9-22.5 cm. Execution: Louis Louroux, Foëcy for La Maison Moderne, Paris. Porcelain, white, glazed, overglaze decoration in auburn and gray-green; stylized leaf decoration. Jugs marked: M. DUFRENE (gray-green).

Additional saucer with chips.

Duncan, *The Paris Salons*, Vol. IV, Woodbridge 1998, p. 196, reproduction of a contemporary photograph of the 1903 Salon, with different decor; Bröhan Museum Berlin, Bröhan Collection II, Part 2, Berlin 1977, no. 435; Ulmer, *Art Nouveau*, Stuttgart 1999, p. 159.

€ 2.500 - 3.500

490
Thomas Victor Sergeant
Vase 'Conch', c. 1870

H. 17.4 cm. Faïence, relief, polychrome glazed. Marked: TS (embossed); collection label. Provenance: From the collection of Maria and Hans-Jürgen Heuser, Hamburg, no. 6181.

€ 400 - 500



490

491
Thomas Victor Sergeant
Splendid vase, c. 1870

H. 4.3 cm. Stoneware, relief, polychrome glaze. Base signed: Sergeant (blue, faint).

Image online.

€ 400 - 500

492

René Crevel (AFTER)
Vase 'Le Cavalier à l'oiseau', 1934

H. 50 cm. Execution: Manufacture Nationale de Sèvres, 1934. Porcelain, white, glazed, polychrome underglaze. Rider with dove in stylized landscape. Neck/lip and base silver-colored. Marked: R. Sivault d'après R. CREVEL (black, handwritten), manufacturer's mark SEVRES with year letter g (black glaze stamp), CU or M, 1292 PN (incised), remains of a paper label.

Born in Rouen in Normandy, René Crevel was one of the last all-round talents. After studying architecture from 1906 to 1912 and training in various architectural firms in the region, he moved to the capital Paris in 1913. In addition to architectural designs, he created self-taught illustrations, sketches for arts and crafts, drawings and oil paintings. He supplied designs such as wallpaper, fabric patterns, lamps and furniture for the large department stores in the capital. Stage sets and theater costumes were also part of his repertoire. He always found time to paint on the side. His role models and influences included avant-garde artists, Fauvism, Cubism, Futurism and Nabis.

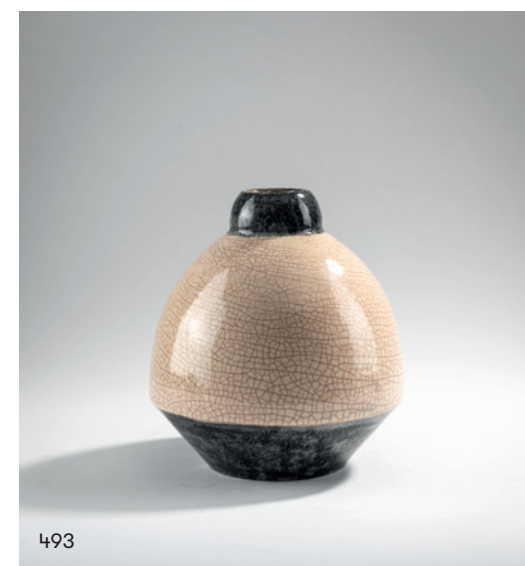
Crevel celebrated his greatest success with the decoration of the pavilion of the Grands Magasins du Louvre at the famous Exposition internationale des Arts décoratifs in 1925, where he realized the exhibition rooms together with Paul Follot (1877-1942), among others.

In November of the same year, he began a long collaboration with the Manufacture nationale de Sèvres, for which he designed several plate decorations and a large vase that year.

€ 5.500 - 6.500



492



493

493

Marcel Guillard
Vase, c. 1930

H. 18.5 cm. Execution: Willi Wüillemier, Paris. Brown earthenware, glazed white and anthracite gray with pink craquelé. Base marked: Wüillemier scp, Marcel Guillard (stamp).

€ 700 - 900



494
Carlo Bugatti
Console table, c. 1902

H. 70.5 cm, 116 x 60 cm. Wood, dark stained, pewter inlays, parchment, copper sheet, cotton, bone inlays, brown leather.
 Vgl. Dunsmore/Payne, Carlo-Rembrandt-Ettore-Jean Bugatti, Hong Kong 2009, S. 50.
 € 25.000 - 28.000



495

495
France
Chaise longue, 1880s

H. 101 cm, 64 x 158 cm. Carved mahogany, crème-white textile cover with white and green embroidery.
 € 500 - 1.000



496

496
Emile Gallé, Nancy
Tray, c. 1900

H. 9 cm, 52 x 33 cm. Walnut, carved, motif of an oriental landscape made of various precious woods. Signed: Gallé (inlaid).
 € 450 - 650

497
Emile Gallé, Nancy
'Bergère' side table, c. 1900

H. 71 cm, Ø 52.5 cm. Walnut wood, carved, table top with a shepherdess tending her sheep, made of various fruit woods. Signed: E. Galle (embossed, faint).
 Image online.
 € 700 - 900

498
Nancy
Display cabinet 'Pissenlit', c. 1900

Three-partite. H. 180 x 212 x 55 cm. Walnut wood, carved, bronze, glass.
 Image online.
 € 700 - 800

499
Nancy
Desk 'Pissenlit', c. 1900

H. 76 cm, 142.5 x 79 cm. Walnut wood, carved, bronze.
 Glass plate for protection.
 Image online.
 € 700 - 800

500
Nancy
Desk chair 'Pissenlit', c. 1900

H. 75 cm 62 x 56 cm. Walnut wood, carved, dark brown leather.
 Image online.
 € 500 - 600

501
Nancy
Two side chairs 'Pissenlit', c. 1900

H. 93 cm, 49 x 44 cm. Walnut wood, carved, bronze, glass.
 Image online.
 € 500 - 600

502

Marcel Bouraine; Gabriel Argy-Rousseau
Light sculpture 'Pomona', c. 1928

H. 52 cm, 54 x 26.5 cm (with base). Bronze, silver plated. Shades made of pâte de verre, molded, clear, green, yellow, blue and red. Base signed: A. Bouraine. Black marble base.

Not electrified.

Cf. Bloch-Dermant, G. Argy-Rousseau, Paris 1990, p. 124 (text, collaboration between Argy-Rousseau and Bouraine); cf. also: No. 25.14.

€ 10.000 - 15.000



503

503

Alexandre Charpentier
Plaque 'Le Dessin', 1894

25 x 17 cm (plaque). Bronze, dark brown patina. Marked: artist's signet. In mahogany frame: 38.5 x 27 cm.

€ 600 - 800

504

Demètre H. Chiparus
'L'Age du Bronze', c. 1928

A young man dressed only in a cloth, bending a piece of metal with all his physical strength. H. 51.5 cm, 73.5 x 15.5 cm (with base). White metal, brown/green patina. Base signed: DH Chiparus (incised). Slate base.

Shayo, Chiparus, New York 1999, p. 65.

€ 1.500 - 2.000



504



505

505

Demètre H. Chiparus
Panther, c. 1935

H. 33 cm, 74.5 x 15.5 cm (with base). Cast metal, green patina. Base signed: DH Chiparus (incised). Composite base made of gray-white and black-green marble.

€ 1.500 - 2.000

506

Carlo de Veroli
Profile head of a girl, 1920s

H. 31 cm, 24 x 12 cm. Marble. Signed on the side: Veroli.

€ 900 - 1.200



506



507

Raoul Larche
Figurative table light 'La danse, la
Loïe Fuller', model for the Paris World
Exhibition, 1900

Dancer with raised arms, the floor-length dress enveloping the body in folds, the long, loose hair decorated with a flower, and the veil thrown up in deep swirls in which two electric bulbs with sockets are hidden. H. 45.5 cm. Bronze, fire-gilded. Signed on the hem of the dress: RAOUL LARCHE and on the opposite side inscribed: round foundry mark SIOT-DECAUVILLE FONDEUR, I 925.

Provenance: Sotheby's New York, cat. 9238, December 17, 2014, cat. no. 363, since then in private German ownership. Exhibition cat. Masterpieces of Art Nouveau in the Bavarian National Museum, Munich-Stuttgart 2010, no. 4 and cover image. Raoul Larche created two further depictions of Loïe Fuller as Salome, cf. exhibition cat. A Document of German Art, Darmstadt 1976, vol. 2, no. 189, 190. The American dancer Loïe Fuller enchanted visitors to the Paris World Exhibitions with her veil dances in the specially created pavilion, and in 1892 she made her Paris debut at the Folies Bergères. Several sculptors, including Théodore Rivière and Pierre Roche, created sculptures based on these veil dances.

€ 12.000 - 24.000

508

Georges de Feure
Two candlesticks, c. 1905

H. 27.6-27.8 cm. Execution for the gallery L'Art Nouveau Bing. Bronze. Marked: DE FEURE (embossed).

Hoffmann, Der Moderne Stil, Stuttgart 2006, p. 225.

€ 800 - 1.000

509

Paul Bonnaud, Limoges
Cloisonné vase with Insects, 1905

H. 18.5 cm. Silver, gold-plated, polychrome enamel painting on an opal white background. Sign: P.BONNAUD LIMOGES 1905 (black solder). Stamped on the base: Minerva head, workshop mark in a lozenge.

Image online.

€ 400 - 600

507



508



512

510

Christofle, Paris
Twelve knife rests, c. 1925

Various animal figures. L. 8.2-10.8 cm. Silver-plated metal. Marked: Knight, GALLIA (stamped).

In original box.

Image online.

€ 650 - 750

511

France

Ceiling light, 1930

H. 70.5 x 60 x 30.5 cm. Nickel-plated sheet metal, metal tube, colorless glass rods, frosted glass.

€ 900 - 1.200

512

Pierre Le Faguays
Table light 'Odalisque', c. 1930

H. 45 cm. Cast metal, green patina, ice glass, raspberry red. Plinth signed: Fayral (bossed). Black-gray marble base.

€ 1.200 - 1.800

513

Pierre Le Faguays
Table light 'Offrande', c. 1930

H. 32 cm, 51 x 12 cm (with base). Spelter, green patina, pressed glass, colorless, relief decoration with fruit and leaves. Marked: Fayral (2x, bossed). Black and white marble base.

€ 1.000 - 1.500



513



511

514

Leon Kann
Two Candlesticks, c. 1900

H. 11.4 cm. Bronze, gold-plated. Signed: L. Kann, foundry mark Siot-Decauville, 1765 (stamped).

€ 600 - 700



514



515



516



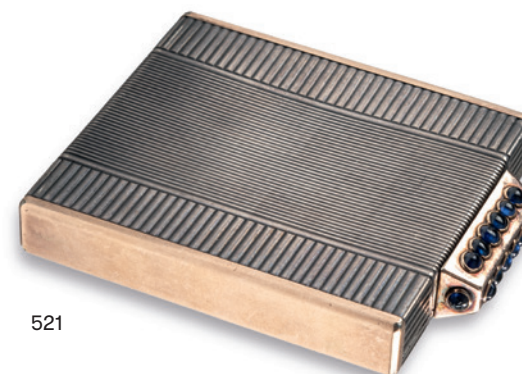
517



518



519



521



520

515**France
Pendant**

Copper, silver-plated, covered with precious metal foil, pasty polychrome enamel. 33.24 grams. 74 x 58 mm. Includes: chain, length 51 cm.

€ 600 - 800**516****France
'Venus' brooch, 1920s**

Iron, white gold and yellow gold, diamond chips. 15.45 grams. 26 x 28 mm. Stamped: MÉTAUX DIVERS.

Provenance: From the collection of Maria and Hans-Jürgen Heuser.

€ 300 - 400**517****France
Art Deco needle, c. 1930**

White gold, approximately 67 diamond chips, one baguette-cut diamond, one old-cut diamond, two cut lapis lazuli, coral and two emerald cabochons. 7.71 grams. L. 80 mm. Stamped: eagle head, workshop signet.

€ 3.800 - 4.400**518****France
Fur clip, 1930s**

Platinum, white gold 750, two lapis lazuli. 24.74 grams. 40 x 28 mm. Stamped: workshop signet in a lozenge eagle head, dog head.

€ 2.800 - 3.200**519****Carter Gough & Co., Newark, NJ
Brooch/pin 'Girl's Head', c. 1900**

Yellow gold 585, enamel and three small pearls. Girl with long hair and four poppies. 3.19 grams. 20 x 20 mm. Stamped: 14 K, workshop mark.

€ 500 - 600**520****René Lalique
Fragment of a tiara/comb 'Bleuets', 1903-04**

Carved horn crown with cornflowers and buds on stems of varying lengths, partially with a bluish patinated finish, applied flowers made of enameled silver. 30.21 grams. H. 21 mm, W. 135 mm. Stamped: LALIQUE. Fixed fracture, comb teeth ground down.

Cf. Barten, René Lalique. Schmuck und Objets d'Art, Munich 1977, p. 203, no. 143 (sketch of the 'Bleuets' decoration for a decorative comb).

€ 1.500 - 2.500**521****Arnold Ostertag, Paris
Powder compact, c. 1930**

Silver and gold, mirror glass, 18 sapphire cabochons. 169.93 grams. H. 12 x 77 x 64 mm. Marked: OSTERTAG PARIS DEPOSE, workshop signet in a lozenge, mark for vermeil (faint).

€ 500 - 700



522



523

522**Paris
Brooch 'Girl's Head', c. 1900**

Yellow gold 750, pendant with pearl drop. 20.42 grams. 40 x 41 mm. Stamped: gold hallmark and unidentified workshop signet EC.

Can also be worn as a necklace.

Provenance: From the collection of Maria and Hans-Jürgen Heuser, Hamburg.

€ 1.600 - 2.000

523**Paris
'Amor' brooch, c. 1900**

Yellow gold 750, four diamonds (approx. 0.4 ct.). 17.14 grams. 40 x 33 mm. Stamped: gold hallmark and unidentified workshop signet EB.

Provenance: From the collection of Maria and Hans-Jürgen Heuser, Hamburg.

€ 800 - 1.000

524**Pasque, Paris
Table lighter, 1900-10**

In the style of a Japanese snuff bottle. Agate, carved, and malachite, silver, chased, partially gold-plated. Total 138.66 grams. H. 9 cm. Stamped: boar's head, additional mark, PASQUE, 7 rue de la Paix.

€ 1.500 - 2.000

525**Strauss, Allard & Meyer, Paris
Lacquer case, c. 1922**

Silver 800, lacquer, gilded inside, red and black, eggshell fragments. 174.84 grams. 9 x 120 x 83 mm. Stamped: boar's head, workshop mark in a lozenge.

€ 1.100 - 1.500



525



526

526**Thoumieux, Limoges
Pendant**

Copper, silver-plated, covered with precious metal foil, pasty blue enamel. 35.17 grams. 77 x 59 mm. Signed: Thoumieux, Limoges (gold, handwritten).

Includes: chain, length 55.5 cm.

€ 600 - 800

527**Tiffany & Co, New York/Paris
Needle, c. 1915**

Yellow gold 750, partially white enameled, opal, 4 rose-cut diamonds. 2.18 grams. L. 46 mm. Stamped: TIFFANY&CO.

In Original box.

€ 1.600 - 1.800

528**Jean Trotaïn, Paris
Lacquer case 'Voiliers', c. 1925**

Silver 950, gold-plated inside, lacquer, predominantly dark blue, dark green and cream white, eggshell fragments. Onyx clasp. 132.77 grams. 7 x 150 x 83 mm. Stamped: Minerva head, workshop signet in a lozenge.

€ 1.200 - 1.600

529**USA
Brooch, c. 1900**

Phoenix in flight, devouring a pearl, an opal in the right claw as a pendant. Yellow gold 750, pearl, opal. 19.07 grams. 50 x 52 mm. Stamped: MR, 18K, French import hallmark.

Provenance: From the collection of Maria and Hans-Jürgen Heuser.

€ 1.200 - 1.500

527



528



529



530

530**Frederick Charles Victor of Vernon
'Amor' brooch, c. 1900**

Yellow and red gold, seven diamond chips. 6.37 grams. Ø 18 mm. Execution: presumably Eduard Weichesmüller, Vienna. Marked: AMOR, F. VERNON. Stamped: Austrian hallmark A4, EW, A.

Provenance: From the collection of Maria and Hans-Jürgen Heuser, Hamburg.

€ 400 - 500

531

Loetz, Klastersky Mlyn
'Phänomen' table light, c. 1899

H. 42 cm. Cased glass, colorless, ribbed decoration of silver-yellow threads, candia Phänomen Gre 6893, strong pearlescent matt luster. Pewter base presumably by Moritz Hacker, Vienna.
€ 1.600 - 2.200



531

532

Loetz, Klastersky Mlyn
Rose water sprinkler 'Papillon', 1898-1900 and footed vase, 1904

H. 24 cm. Colorless and yellow glass with rolled-in flakes in silver yellow, 'candia Papillon', gold and pearlescent matt luster. With: Footed vase, c. 1904. H. 12.1 cm. Colorless glass, candia Silberiris, gold-colored matte luster, applied leaves in green with silver-yellow threads.
€ 800 - 1.000

533

Christopher Dresser
'Creta Rusticana'-Vase, 1899

H. 31.8 cm. Green glass, ribbed, pearlescent matt luster; Rusticana decor. Ricke/Ploil, Lötzt Böhmisches Glas, Vol. 2, Munich 1989, p. 331, shape no. 246/668.
€ 500 - 700



532



533

534

Franz Hofstötter
'Phänomen' goblet, 1899

H. 23.5 cm. Execution: Loetz, Klastersky Mlyn. Cased glass, colorless, ribbed decoration of silver-yellow threads, candia Phänomen Gre 6893, strong pearlescent matt luster. Mergl/Ploil/Ricke, Lötzt Böhmisches Glas, Ostfildern 2003, p. 105, no. 50.
€ 1.200 - 1.800

535

Loetz, Klastersky Mlyn
Slender 'Papillon' vase, c. 1899

H. 21 cm. Cobalt blue glass with silver-yellow fusions, papillon decoration, pearlescent matt luster.
€ 500 - 700

536

Loetz, Klastersky Mlyn
Small vase 'Luna optisch', 1900

H. 9.5 cm. Colorless glass, optically blown, slightly light green and dark blue gradient, pearlescent matt luster.
€ 550 - 650

537

Loetz, Klastersky Mlyn
Small 'Pampas' vase, 1900

H. 8.3 cm. Cobalt blue glass, the ground with dense silver-yellow fusions, colorless pampas decoration made of net-like thread overlays, matt pearlescent luster.
€ 700 - 800

538

Loetz, Klastersky Mlyn
Small 'Phänomen' vase, 1900

H. 11.2 cm. Cased glass, colorless and green, combed 'Phänomen' decoration made of silver-yellow threads, similar to Phänomen Gre. 29, with a strong petrol matt luster.
€ 500 - 600

539

Loetz, Klastersky Mlyn
'Phänomen' bowl, 1900

H. 8.4 cm. Cased glass, colorless and green, combed 'Phänomen' decoration made of silver-yellow threads, similar to Phänomen Gre. 29, strong petrol matt luster.
€ 1.000 - 1.200



534



535



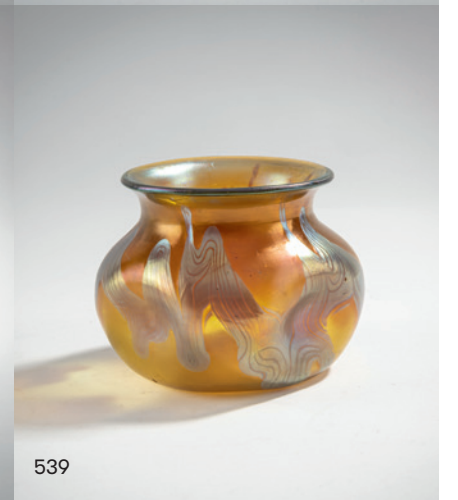
536



537



538



539



540

540
Marie Kirschner
Vase with handles, 1900

H. 19.5 cm, 23 x 13 cm. Execution: Loetz, Klastersky Mlyn. Colorless, raspberry-red glass, strong gold and pearlescent matt luster, candia Silberiris. Signed on base: MK (engraved).

Mergl/Ploil/Ricke, Lötzt Böhmisches Glas, Ostfildern 2004, p. 181, no. 141.

€ 2.500 - 3.500

541
Loetz, Klastersky Mlyn
Vase 'creta Papillon', c. 1900

H. 17.8 cm. Green glass with rolled-in flakes in silver-yellow, 'creta Papillon', green and pearlescent matt luster.

€ 600 - 700

542

Loetz, Klastersky Mlyn
'Papillon' vase, c. 1900

H. 16.3 cm. Cased glass, colorless and amber, with rolled-in crushed glass between the layers, matt gold and pearlescent luster.

€ 600 - 800

543

Loetz, Klastersky Mlyn
Small 'Papillon' vase with silver overlay, c. 1901

H. 7.7 cm. Green glass with rolled-in flakes in silver-yellow, 'creta Papillon', pearlescent matt luster.

Image online.

€ 300 - 400

544

Loetz, Klastersky Mlyn
'creta Papillon' vase with handles, with pewter mounting by Juventa-Urania-Metallwarenfabrik, Maast-richt, 1901

H. 31.5 cm. Green glass with rolled-in crushed glass in silver-yellow, 'creta Papillon', green and pearlescent matt luster. Prod. No. Com. 1652/III.

Hötl (ed.), Böhmisches Glas, Passau 1995, Vol. IV, No. 134.

€ 1.000 - 1.400

545

Loetz, Klastersky Mlyn
Tall vase, 1902

H. 25.5 cm. Colorless glass, red dots, silver-yellow veins, base gold-plated and decorated with etching ink, decor I/284.

Cf. Mergl/ Ploil/ Ricke, Lötzt Böhmisches Glas 1880-1940, Ostfildern-Ruit 2003, p. 327, D 6.

€ 1.200 - 1.600

546

Loetz, Klastersky Mlyn
'Tree trunk vase' with snake, 1902

H. 43 cm. Colorless glass, dense silver-yellow crumb fusions, gold and pearlescent matt luster, candia Silberiris.

Cf. Ricke/Ploil, Lötzt Böhmisches, Vol. I, Munich 1989, No. 145; ibid., Vol. II, p. 138, shape no. 2/582.

€ 1.200 - 1.600

547

Loetz, Klastersky Mlyn
Vase with handles 'Medici', 1902

H. 12.4 cm. Cased glass, colorless, 'marron' gradient, fused silver-yellow crumbs 'Medici' decoration, strong petrol and bronze matt luster.

€ 400 - 600



541

542



545



547



544



546



548

548
Loetz, Klastersky Mlyn
'Titania' lidded box, c. 1906

H. 8 cm, Ø 12 cm. Cased glass, opaque red and colorless, Titania decoration made of silver-yellow threads.

€ 800 - 1.200

549
Loetz, Klastersky Mlyn
Two vases, 1911

H. 22.8-22.9 cm. Colorless glass, fused blue glass. Star cut on the base. Execution 119.

€ 800 - 1.000



549



550

550
Loetz, Klastersky Mlyn
Goblet, c. 1920

H. 22.5 cm. Cased glass, colorless, opal green and deep violet. White enamel drops, black solder decoration in the style of Dagobert Peche.

Cf. Höltl (ed.), Das Böhmisches Glas, Vol. IV, Passau/Tittling 1994, No. IV.211 (decoration).

€ 1.200 - 1.600

551

551
Loetz, Klastersky Mlyn
Vase, c. 1920

H. 18.8 cm. Cased glass, colorless, opal blue and deep violet. White enamel drops, black solder decoration in the style of Dagobert Peche.

€ 500 - 700



552

552
Loetz, Klastersky Mlyn
Slender Vase, c. 1920

H. 20 cm. Cased glass, colorless, opalescent light violet and deep violet. White enamel drops, black solder decoration in the style of Dagobert Peche.

€ 500 - 700

553
Loetz, Klastersky Mlyn
Wide goblet, c. 1920

H. 12.5 cm. Cased glass, colorless, opal green and deep violet. White enamel drops, black solder decoration in the style of Dagobert Peche.

€ 400 - 500



553

554
Koloman Moser
Three liqueur glasses, c. 1900

H. 20 cm. Execution: J. & L. Lobmeyr, for E. Bakalowits & Sons, Vienna. Colorless glass, bowl pink or green gradient, optically blown. Engraved and gold-plated decoration with the inscription LUCCA LIQUEUR.

Franz (Hrsg.), The Glass of the Architects Vienna 1900-1937, Milan 2016, p. 98; Neuwirth, Das Glas des Jugendstils, Munich 1973, p. 119.

Image online.

€ 300 - 400



555

555
Jutta Sika
Carafe '134', c. 1900

H. 28 cm. Execution: Meyr's Neffe, Adolfov for Bakalowits Sons, Vienna. Colorless glass, impressed 'Fiammetta' decoration.

€ 500 - 700

556

556
Meyr's nephew, Adolfov (ATTR.)
Wine glass, c. 1908

H. 17.5 cm. Glass, colorless, cut, bowl with white overlay and polychrome enameled flower frieze. Lip and base covered in gold.

€ 900 - 1.000



557

557
Amphora-Werke Riessner & Kessel,
Trnovany-Teplice
Vase with female profile to the right, c. 1906

H. 27.3 cm. Gemstone porcelain, glazed predominantly matt green and blue. Front with a female profile with a bird helmet, polychrome enamel and with relief gold application in front of a landscape with a rising sun. Base marked: manufacturer's mark AMPHORA, crown, 02040 28 (embossed).
€ 3.000 - 3.600



558

558
Amphora-Werke Riessner, Stellmacher & Kessel,
Trnovany-Teplice
Vase with woman's head in profile to the left, c. 1900

Baluster. H. 27 cm. Gemstone porcelain, glazed predominantly matt gray and violet. Front with a female profile with a bird helmet, polychrome enameled and with relief gold application. Base marked: manufacturer's mark RStK (red glaze stamp), 21, 2014 AMPHORA (embossed).
€ 3.000 - 3.600



559

559
Amphora-Werke Riessner,
Stellmacher & Kessel,
Trnovany-Teplice
Vase with woman's head, c. 1902

H. 23 cm. Gemstone porcelain, predominantly glazed green, blue and brown. Enamel flowers and relief gold application. On the front a bust of a girl with a crown and long hair in front of a forest landscape. Marked on the base: manufacturer's mark RStK (red glaze stamp), 528, 11 (embossed), remains of a paper label.
€ 3.000 - 3.600

560
Bertold Löffler
Covered vase 'Bird', 1910

H. 9.9 cm. Execution: Wiener Keramik. Earthenware, polychrome glaze. Marked: Artist's signet Lö, mark of Wiener Keramik (embossed).
 mak.at Inv.-No. WWF 89-40-7.
€ 2.000 - 3.000



560



562

561

**Keramos-Vienna Art Ceramics and Porcelain
Manufactory AG**
'Actress', c. 1930

H. 25.5 cm. Earthenware, polychrome glaze. Marked:
Manufacturer's mark KERAMOS MADE IN AUSTRIA (black glaze
stamp), 122, 8311, 4 (embossed).

Image online.

€ 100 - 200

562

Stephan Dakon
'Rumba', c. 1938

H. 32 cm. Execution: Friedrich Goldscheider, Vienna. Earthenware,
polychrome glaze. Marked: Goldscheider Vienna, MADE IN GER-
MANY (black glaze stamp), 8302 134 66 (embossed), additional
markings (black, handwritten).

Dechant/Goldscheider, Goldscheider, Stuttgart 2007, p. 491.

€ 500 - 700

563

Vilmos Zsolnay, Pecs
Planter, c. 1891-95

H. 12.8 cm, Ø 17.5 cm. Earthenware, eosin glaze in green, gold and
copper red. Base marked: ZSOLNAY PECS 3927 36 1 0 (embossed).

€ 500 - 700

564

Vilmos Zsolnay, Pecs
Piggy bank, c. 1895

H. 11 cm, 19 x 8.5 cm. Earthenware, eosin glaze in reddish brown
and beige. Marked on the underside: round manufacturer's mark
(white glaze stamp), ZSOLNAY PECS 39 (embossed), 4849 3
(incised), 3209 (black, handwritten), remains of two original paper
labels.

Feet with losses.

€ 500 - 700

565

Vilmos Zsolnay, Pecs
Planter, 1900-1918

H. 11.3 cm, Ø 15.5 cm. Earthenware, green-gold eosin glaze.
Marked on the base: seal mark, faint numbers (embossed).

€ 500 - 700



564



563



565

566

Vilmos Zsolnay, Pecs
Vase with Sunrise, c. 1898

H. 17.5 cm. Earthenware, polychrome eosin glaze with a
stylized forest landscape against the background of the ri-
sing sun, on the back stylized clouds of mist. Base marked:
seal mark, 5330 6 M 22 (embossed).

€ 3.500 - 4.500





567

567
Lajos Mack
Vase 'Wine', c. 1900

H. 33.5 cm. Execution: Vilmos Zsolnay, Pecs. Earthenware, semi-sculptural decoration with grape vines and leaves, green-gold eosin glaze with dark green and dark blue. Wall marked: Bona uva (Good Grape), artist's signet. Base: seal mark, 36, 6138 10 (embossed).

Slightly chipped.

€ 2.800 - 3.600



568

568
Vilmos Zsolnay, Pecs
Vase with handles with rose hips, c. 1900

H. 27.2 cm. Earthenware, polychrome enamel on yellow ground, partial eosin glaze and gold drawing. Marked on the base: seal mark, 6183, 36.22 (embossed), faint handwritten notes, remains of a paper label.

€ 2.800 - 3.600



569

Vilmos Zsolnay, Pecs
Vase with Waves, c. 1902

H. 46.5 cm. Earthenware, yellow and green luster glaze. Marked: red seal mark, 6760 (embossed).

€ 3.000 - 4.000

570

Sándor Apáti Abt
Vase with Male Nude, 1904

H. 20 cm. Execution: Vilmos Zsolnay, Pécs. Stoneware, incised, matt violet and gold eosin glaze. Base marked: 759 (embossed), 7290 (?) (incised).

Elite Design Gallery (Hrsg.), Zsolnay, Budapest 2003, p. 147, No. 123.

€ 2.800 - 3.600



571

Vilmos Zsolnay, Pécs
Cachepot with Wild Ducks, 1900-18

H. 15.5 cm, Ø 23 cm. Faïence, golden eosin glaze, polychrome enamel. All-round decoration with flying wild ducks. Marked: seal mark, 644, 0, 18 (embossed).

€ 1.200 - 1.600



571



572

572

Vilmos Zsolnay, Pécs
Tile shelf, c. 1900

H. 58 cm, 131 x 21 cm. Oak, earthenware, polychrome eosin glaze. Faint stamp.

€ 1.700 - 2.700



573



575

573

**August Ungethüm, Vienna
Small buffet, 1904-06**

H. 192 cm, 104 x 43.5 cm. Mahogany, cherry wood, carved, glass, marble top.

This and the following positions were part of a furniture ensemble.

Provenance: Sotheby's 1998.

€ 800 - 1.200

574

**England
Four 'Gondola' chairs, c. 1904**

H. 94 cm, 47.5 x 57 cm. Mahogany, cherry wood, carved, brown leather.

This and the following positions were part of a furniture ensemble.

€ 1.200 - 1.600

575

**August Ungethüm, Vienna
Large buffet with top, 1904-06**

H. 190.5 cm, 193.5 x 63.5 cm. Mahogany, cherry wood, carved, glass, marble top, plate glass.

Marble top glued. One foot loose.

This and the following positions were part of a furniture ensemble.

Provenance: Sotheby's 1998.

€ 1.200 - 1.600



576

576

**August Ungethüm, Vienna
Table with four 'Gondola' chairs, c. 1905**

Table: H. 78 cm, 119 x 99.5 cm. Mahogany, cherry wood, carved.

Chairs: H. 94 cm, 47.5 x 57 cm. Cherry wood, carved, brown leather.

Two leaves, each 52 x 99.5 cm.

This and the previous positions were part of a furniture ensemble.

Provenance: Sotheby's 1998.

€ 1.500 - 2.000



574



577

577

Otto Wagner
Two armchairs '718/2 F', c. 1902

H. 80.5 cm, 54.5 x 53 cm. Execution: J.&J. Kohn, Vienna (ATTR.). Bent beech wood and plywood, stained dark red, fabric cover. Marked: Remnants of a paper label.

The upholstery was renewed and reupholstered some time ago, true to the original with fabric by Backhausen, Vienna, which probably also obscures the marking.

Jacob & Josef Kohn, Cat. 1916, Reprint, Munich 1985, p. 41.

€ 2.000 - 3.000

578

Otto Wagner
Two armchairs '718 F', c. 1902

H. 75.5 cm, 55.5 x 56 cm or H. 75.5 cm, 55 x 55 cm. Execution: J.&J. Kohn, Vienna. Bent beech wood and plywood, stained dark, fabric cover. Marked: Manufacturer's label (1x) and embossed stamp (2x).

Reupholstered some time ago, true to the original with fabric by Backhausen, Vienna.

Jacob & Josef Kohn, Cat. 1916, Reprint, Munich 1985, p. 41.

€ 2.000 - 3.000

579

Josef Hoffmann
Wall mirror, c. 1935

H. 39 x 29 x 3.7 cm. Execution: Max Welz, Vienna. Wood, carved, covered with gold leaf, mirror glass.

Kristan/Bogner, Der späte Josef Hoffmann, Grossebersdorf 2023, p. 158.

Image online.

€ 200 - 300

580

Franz Xaver Bergmann
'Cobra', c. 1900

H. 15 cm. Cold-painted bronze. Indistinctly signed (embossed) on the base.

€ 1.500 - 2.000



578



580



582

581

Franz Hagenauer
Large Female Head, c. 1928

H. 50 cm. Brass. Marked: wHw, MADE IN AUSTRIA, FRANZ, HAGENAUER/ WIEN, 1020

Cf. Kronsteiner, Hagenauer, Vienna 2011, p. 50 (1928)

€ 20.000 - 25.000

582

Karl Hagenauer
Josephine Baker, c. 1930

H. 29 cm. Execution: Werkstätten Hagenauer, Vienna. Cast brass, brass sheet, silver-plated. Marked on the base: wHw MADE IN AUSTRIA (stamped).

Kronsteiner, Hagenauer, Vienna 2011, p. 67 (and cover).

€ 2.000 - 3.000



581



583



584

583

**Hagenauer, Vienna
Woman's Head with Scarf, c. 1940**

H. 25 cm. Bronze, black patinated, partially polished. Bottom marked: wHw, MADE IN AUSTRIA, HAGENAUER WIEN, Handmade.

Kovacs (Ed.), Hagenauer card cat. 1957, reprint, Vienna 2011, no. 4722.

€ 1.500 - 2.500

584

**Hagenauer, Vienna
'Indian Boy', c. 1940**

H. 37 cm. Various woods, carved, brass, bone. Marked: wHw, HAGENAUER WIEN (embossed, faint).

Kovacs (Ed.), Hagenauer card cat. 1957, reprint, Vienna 2011, no. 4054.

€ 1.500 - 2.500

585

**Karl Hagenauer
Horse's Head, 1940s**

H. 31 cm. Mahogany, carved, nickel-plated brass base. Base marked: ATELIER HAGENAUER WIEN, wHw in a circle (embossed).

Kovacs (Ed.), Hagenauer card cat. 1957, reprint, Vienna 2011, No. 3929.

€ 6.000 - 10.000

586

**Hagenauer, Vienna
Woman's Head with Earring, c. 1945**

H. 24 cm. Brass, partially patinated black-brown. Marked: wHw, HAGENAUER WIEN, HANDMADE, MADE IN AUSTRIA (stamped).

€ 1.500 - 2.500

587

**Karl Hagenauer
African warrior, c. 1957**

H. 29.2 cm. Execution: Hagenauer, Vienna. Carved mahogany, brass sheet, brass rod. Marked: HAGENAUER WIEN, wHw, MADE IN VIENNA AUSTRIA (stamped).

Spear hand restored.

Cf. Kovacs (Ed.), Hagenauer card cat. 1957, reprint, Vienna 2011, no. 4046.

€ 500 - 600



585



586



587



588

Carl Kauba
'La pêche miraculeuse', um 1900

H. 13 cm, 23 x 19 cm. Bronze, dark patinated or gold-plated. Marked: LA PECHE MIRACULEUSE. Signed: K. THENN and stamp COPYRIGHT THENN VIENNA.

€ 2.000 - 3.000

589

Josef Lorenzl
'Captured Bird', c. 1922

H. 25 cm. Bronze, dark patina. Plinth signed: LORENZL (embossed). Green onyx base. Base glued.

€ 850 - 950

588



589

590

János Mattis Teutsch
'Kneeling', c. 1930

H. 35 x 15.7 x 4.1 cm. Cast aluminum. Plinth with artist monogram MT.

With certificate from the gallery Mügyütök Galériája Aukciós Ház, Budapest from 1994. There the provenance is stated as „from the artist's family“.

€ 5.000 - 7.000

591

Peter Tereszczuk
Four-piece chryselephantine desk set, c. 1910

Handles in the form of busts or figures of girls. Tray with two inkwells, blotter, seal and paper knife. H. 19.3 cm, 31.5 x 15.5 cm, H. 8-10 cm, L. 22 cm. Execution: Tereszczuk & Ullmann, Vienna. Bronze, dark patina, faces made of carved ivory. Signed: P. Tereszczuk, workshop signet TU (bossed).

The girl's nose on the seal is chipped. Only one glass insert.

An EC certificate has been issued for this lot by the Department for Climate and Environmental Protection of the City of Munich, which allows objects with ivory to be marketed within the European Union.

€ 2.000 - 3.000

590



591



592

592

Bruno Zach
Centerpiece with Dancer, c. 1930

H. 39 cm, Ø 27 cm. Bronze, dark patina. Plinth signed: ZACH. Red marble bowl.

€ 1.500 - 2.000



593

593

Julius Zimpel
'Diana', 1924

H. 9.4 cm (without base). Execution: Friedrich Nerold, Wiener Werkstätte. Carved ivory. Signed on the underside: artist's monogram z, WW (ligated) and N (engraved).

Unique. Restored. Includes: wooden base.

mak.at, Inv. No. WWKA 524 (sketch). This is dated 1924 in the archive of the Museum of Applied Arts Vienna. Only this one executed piece is known.

An EC certificate has been issued for this lot by the Department for Climate and Environmental Protection of the City of Munich, which allows objects with ivory to be marketed within the European Union.

€ 1.500 - 2.500

594

Vienna
Golfer, c. 1900

H. 20 cm (with base). Bronze, cold painted. Slate base.

€ 800 - 900



594

595

Gustav Gurschner
'Helioglas' table light, 1902

H. 57.5 cm. Ø 26 cm. Glass, colorless, greenish, with rolled-in flakes in opal white and copper orange as well as violet, with a pearlescent matt luster by Wilhelm Kralik Sohn, Eleonorenhain. Bronze base. Marked: WIEN GURSCHNER DEPOSÉ.

€ 3.000 - 4.000





596



597



598



599

596**Vienna**
Lidded jar, 1920Metal, silver-plated. 276.08 grams. H. 85 mm. Not signed.
€ 1.500 - 2.000**597****Josef Hoffmann**
Ashtray 'Lloyd Triest', c. 1909

H. 1.5 cm, 13.1 x 6.2 cm. Cast brass. Marked: WIENER WERK STÄTTE, artist's signet JH.

The Wiener Werkstätte equipped several ships of the shipping company (Austrian) Lloyd Triest. See mak.at, Inv. No. WWF 103-181-2.

€ 1.500 - 2.000**598****Josef Hoffmann; Mathilde Flögl (Flöge)**
Visiting card holder, 1927-29

8.5 x 8.2 cm. Execution: Wiener Werkstätte. Black leather, grained, gold edge. Signed: WIENER WERK STÄTTE (gold edge).

€ 500 - 700**599****Josef Hoffmann**
Cork, c. 1904

Silver 900. 52.58 grams. H. 38 mm, Ø 60 mm. Execution: Wiener Werkstätte, after 1922. Stamped: JH, WW, 900, Hoopoe.

€ 850 - 950**600****Josef Hoffmann**
Flower basket, 1905

Silver 900, glass insert. 116.81 grams. H. 240 x 41 x 41 mm. Execution: Wiener Werkstätte. Stamped: Diana head, WW, artist's signet JH, rose mark. mak.at. Inv.-No. 1332-48-1.

€ 4.500 - 6.500



601

Josef Hoffmann
Cup, c. 1930

Silver 900. 99.91 grams. H. 60 mm, Ø 94 mm. Stamped:
 Hoopoe 900 MADE IN AUSTRIA, WIENER WERK STÄTTE JH.
 € 3.000 - 4.000



602

Koloman Moser
Jar, c. 1904

Silver 900, glass insert. 105.45 grams. H. 59 mm, Ø 67 mm. Execution: Alfred Mayer, Wiener Werkstätte. Stamped: Diana head, WW, KM, rose mark, maker's signet AM.
 € 4.500 - 5.500





603

603
Vienna
Silver Wedding Anniversary Jar, 1927

Silver sheet, chased. 306.91 grams. H. 23.5 cm. Not marked.
 Corners of the lid bent. Remains of shellac varnish.
 € 900 - 1.200

604
Josef Hoffmann
Brooch with moss agate, c. 1920

Silver, moss agate. 7.40 grams. 32 x 22 mm. Stamped: WW,
 GSt., Diana head.
 € 1.200 - 1.800



604



605

605
Josef Hoffmann
Brooch 'Bird', c. 1910

Silver 900. 3.25 grams. Ø 22 mm. Execution: Wiener Werk-
 stätte. Stamped: WW, WIENER WERKSTÄTTE (faint), 900, JH.
 € 2.800 - 3.200

606
Josef Hoffmann
Lady's ring, 1912

Openwork, oval shield with stylized leaf and
 grape motifs. Yellow gold 750, 22 pearls. 3.15
 grams. Ring size 55. 2 x 1.5 cm. Execution:
 Wiener Werkstätte. Marked: Vienna official
 hallmark A, chamois head, WW.

When this elegant ladies' ring made of gold
 with pearls was created, Josef Hoffmann
 had reached the peak of his career. The
 Palais Stoclet in Brussels, which he desig-
 ned, was completed in 1911 as a magnificent
 work of art, entirely made from furniture and
 everyday objects from the Wiener Werkstät-
 te. In 1903, Hoffmann founded the produc-
 tion community of artists and craftsmen
 together with Koloman Moser and the finan-
 cier Waerndorfer, with the aim of shaping
 all areas of life according to new aesthetic
 ideals. Jewelry was produced in the first
 year, and jewelry production remained an
 important branch of the Wiener Werkstätte
 in the years that followed.

Cf. von Hase, *Jewelry in Germany and
 Austria*, Munich 1977, p. 310, no. 652, related
 ring.

€ 18.000 - 24.000



606



607

607
Josef Hoffmann
Brooch, 1914-17

Brass, foliage decoration, cobalt blue enamel. 10.46 grams. 28 x 34 mm. Execution: Wiener Werkstätte. Stamped: WW.

mak.at. Inv. No. WWF 89-57-1; Hase, Schmuck in Deutschland und Österreich, Munich 1977, p. 325, No. 713, 714 (there still attributed to Koloman Moser).

€ 700 - 900

608
Carl Meier
Brooch with a woman's portrait, c. 1907

Yellow Gold, circa 32 emerald cabochons, 5 diamond chips. 7.59 grams. L. 53 mm. Stamped: A, workshop mark KM. Portrait of a woman behind glass by Sigmund Walter Hampel (1867-1949, Vienna). In the original case.

€ 1.800 - 2.200



608



610

609
Koloman Moser (SURROUNDINGS)
Bracelet, c. 1900

White, red and yellow gold („quatre couleurs“) 580, two opal matrices, one carved in the style of a scarab, c. 72 diamond splinters, approx. 14 ct. 57.93 grams. 200 x 42 mm. Execution: Josef Siess Sons, Vienna. Stamped: workshop signet SJS, A, fox head.

Smaller opal with cracks.

Egger, Bürgerlicher Schmuck, Munich 1984, p. 198.

€ 5.000 - 6.000



609



611

610
Georg Stöger
Brooch, c. 1920

Silver, blue niello. 8.13 grams. 10 x 37 mm. Execution: Georg Stöger, Wiener Werkstätte. Stamped: G. St., WW, Diana head. www.mak.at, Inv.-No. S 4319.

€ 1.600 - 1.800

611
Vienna
Pendant with chain

Silver, green matt enamel. 28.06 grams. 43 x 35 mm, L. 54 cm.

€ 400 - 500



612

612
Otto Thamm
Vase, 1903

H. 20.3 cm. Execution: Fritz Heckert, Petersdorf. Glass, colorless, opal white, rolled-in silver-yellow flakes and violet-red spots, matt gold and pearlescent luster. Cf. Zelasko, Fritz Heckert, Passau 2012, p. 200.
 € 350 - 450

613
Carl Georg von Reichenbach
Cup, 1905-10

H. 8.7 cm. Execution: Benedikt von Poschinger, Oberzwieselau. Cased glass, colorless and opaque orange, applied blue threads and six opaque green cabochons. Image online.
 € 160 - 180

614
Peter Behrens
Two water glasses from the 'Wertheim' service, 1902

H. 11 cm. Execution: Benedikt von Poschinger, Oberzwieselau. Colorless glass, gold rim. Cat. Museum Künstlerkolonie Darmstadt, Darmstadt 1990, p. 12; Exh. cat. Peter Behrens und Nürnberg, Nuremberg 1980, p. 62, no. 73; Exh. cat. Jugendstil, Hessisches Landesmuseum, Darmstadt 1982, p. 30 f.
 € 1.000 - 1.400

615
Peter Behrens
Water glass from the 'Wertheim' service, 1902

H. 11.3 cm. Execution: Benedikt von Poschinger, Oberzwieselau. Colorless glass, gold rim.
 € 500 - 600

616
Wolfgang von Wersin
Vase, c. 1935

H. 28.5 cm. Manufactured by: Wilhelm Steigerwald crystal glass factory, Regenhütte. Glass, colorless, fused opaque red ribbon. Marked: paper label.
 € 500 - 600

617
Theresienthal (ATTR.)
Covered goblet, c. 1885

H. 44 cm. Clear glass, amber applications. Historicising decor, enamel and gold, tendrils and ornaments. Image online.
 € 150 - 250

618
Hans Christiansen
Eleven shot glasses, c. 1904

H. 13.5 cm. Execution: Theresienthaler Krystallglasfabrik. Colorless glass, bowl with triple wave-cut band. Zimmermann-Degen, Hans Christiansen, Königstein/Taunus 1981, p. 101, fig. 210 and p. 330, VG 3; cat. Museum Künstlerkolonie Darmstadt, Darmstadt 1990, p. 58, no. 76.
 € 1.200 - 1.500

619
Hans Christiansen
Nine champagne coupes, c. 1904

H. 14.5 cm. Execution: Theresienthaler Krystallglasfabrik. Colorless glass, bowl with triple wave-cut band.
 € 900 - 1.200

620
Hans Christiansen
Eleven liqueur glasses, c. 1904

H. 11.5 cm. Execution: Theresienthaler Krystallglasfabrik. Colorless glass, bowl with triple wave-cut band.
 € 1.200 - 1.500

621
Hans Christiansen
Two southern wine glasses, c. 1904

H. 13.8 cm. Execution: Theresienthaler Krystallglasfabrik. Colorless glass, bowl with triple wave-cut band. Image online.
 € 200 - 300

622
WMF, Geislingen
Small 'Ikora' bowl, c. 1928

H. 7.4 cm, Ø 14.4 cm. So-called 'Ikora' glass, colorless, with violet powder inclusions and amber-gold efflorescence of metal salts. Image online.
 € 200 - 280

623
WMF, Geislingen
'Ikora' vase, c. 1929

H. 18.2 cm. So-called 'Ikora' glass, colorless, opal white, red and yellow with dark violet efflorescence of metal salts.
 € 300 - 400

623



624
WMF, Geislingen
'Ikora' bowl, c. 1929

H. 13.5 cm, Ø 19.5 cm. So-called 'Ikora' glass, colorless, with blue, streaky powder inclusions and red and amber-gold efflorescence of metal salts. Image online.
 € 250 - 300

625
WMF, Geislingen
'Ikora' vase, c. 1933

H. 20.5 cm. So-called 'Ikora' glass, colorless, opal white and red with dark violet and white efflorescent metal salts. Image online.
 € 250 - 300

626
WMF, Geislingen
'Ikora' bowl, c. 1935

H. 10 cm, 17 x 15.5 cm. So-called 'Ikora' glass, colorless, with violet powder inclusions and red and silvery efflorescence of metal salts. Image online.
 € 250 - 300



618



619



620

614



615



616



627



630



629

627

**KPM Berlin
Three mocha cups, 1913/14**

H. 5.9 cm. Execution: around 1913/14. Porcelain, white, glazed, lime green overglaze, relief gold. Marked: scepter (blue, under glaze), imperial orb (red, over glaze), painter's signet (+, gold, possibly Helmut Kirchhof), date letter O or N, SW (embossed).
€ 900 - 1.200

628

**Paul Scheurich
Putto, 1940**

From the centerpiece 'Birth of Beauty'. H. 23 cm. Execution: StPM Berlin, after 1979. Porcelain, white, glazed. Marked: sceptre (blue, under glaze), 12, date letter A (embossed). Image online.
€ 150 - 250

629

**Konrad Hentschel
Tureen 'Crocus', 1896**

H. 21 cm, 31 x 20.5 cm. Execution: KPM Meissen, before 1924. Porcelain, white, glazed, stylized crocus blossoms in mint green and reddish brown underglaze. Marked: Button swords (blue, underglaze), U 106 (incised), 13 (embossed), 71 (blue, handwritten). Lid restored.
Cf. Jedding, Meißener Porzellan des 19. und 20. Jahrhunderts, Munich 1981, p. 99, fig. 115.
€ 1.500 - 1.800

630

**Konrad Hentschel
Oval Tureen 'Crocus', 1896**

H. 12 cm, 31 x 18 cm. Execution: KPM Meissen, before 1924. Porcelain, white, glazed, stylized crocus blossoms in mint green and reddish brown underglaze. Marked: Button swords (blue, underglaze), U 107 31 (incised), 71 (blue, handwritten).
€ 2.000 - 2.500

631

**Konrad Hentschel
Twelve dinner plates 'Crocus', 1896**

Ø 23 cm. Execution: KPM Meissen, before 1924. Porcelain, white, glazed, stylized crocus blossoms in mint green and reddish brown underglaze. Marked: Button swords (blue, underglaze, partially two strokes), U 102 or NT (embossed), 71 (blue, handwritten).
One plate with a chip under the rim.
Cf. Jedding, Meißener Porzellan des 19. und 20. Jahrhunderts, Munich 1981, p. 99, fig. 115.
€ 3.000 - 4.000

632

**Konrad Hentschel
Three soup plates 'Crocus', 1896**

Ø 22.7 cm. Execution: KPM Meissen, before 1924. Porcelain, white, glazed, stylized crocus blossoms in mint green and reddish brown underglaze. Marked: Button swords (blue, underglaze, two strokes), 55 (embossed), 71 (blue, handwritten).
Cf. Jedding, Meißener Porzellan des 19. und 20. Jahrhunderts, Munich 1981, p. 99, fig. 115.
€ 900 - 1.200

633

**Konrad Hentschel
Large oval serving plate 'Crocus', 1896**

58.5 x 27 cm. Execution: KPM Meissen, before 1924. Porcelain, white, glazed, stylized crocus blossoms in mint green and reddish brown underglaze. Marked: Button swords (blue, underglaze), 146 (embossed), 71 (blue, handwritten).
Cf. Jedding, Meißener Porzellan des 19. und 20. Jahrhunderts, Munich 1981, p. 99, fig. 115.
€ 1.000 - 1.200



632



633



634

634

**Konrad Hentschel
Serving plate 'Crocus', 1896**

41.5 x 30.7 cm. Execution: KPM Meissen, before 1924. Porcelain, white, glazed, stylized crocus blossoms in mint green and reddish brown underglaze. Marked: Button swords (blue, underglaze, two strokes), 146 (embossed), 71 (blue, handwritten).
Cf. Jedding, Meißener Porzellan des 19. und 20. Jahrhunderts, Munich 1981, p. 99, fig. 115.
€ 600 - 800



631



635



636



637



638

635
Konrad Hentschel
Small serving plate 'Crocus', 1896

35 x 26 cm. Execution: KPM Meissen, before 1924. Porcelain, white, glazed, stylized crocus blossoms in mint green and reddish brown underglaze. Marked: Button swords (blue, underglaze), 146 (embossed), 71 (blue, handwritten).

€ 500 - 700

636
Konrad Hentschel
Three dessert plates 'Crocus', 1896

Ø 20 cm. Execution: KPM Meissen, before 1924. Porcelain, white, glazed, stylized crocus blossoms in mint green and reddish brown underglaze. Marked: Button swords (blue, underglaze, one or four strokes, respectively), S 172 (incised) 46 (embossed), 71 (blue, handwritten).

€ 600 - 800

637
Konrad Hentschel
Three breakfast plates 'Crocus', 1896

Ø 20.5 cm. Execution: KPM Meissen, before 1924. Porcelain, white, glazed, stylized crocus blossoms in mint green and reddish brown underglaze. Marked: Button swords (blue, underglaze, two strokes), Z or 103 11 (embossed), 71 (blue, handwritten).

€ 600 - 800

638
Rudolf Hentschel
Serving plate 'Wing Pattern', 1901

38 x 31.3 cm. Execution: KPM Meissen, before 1924. Porcelain, white, glazed, underglaze in gray-green and dark blue. Marked: Button swords (blue, underglaze, two strokes), T 26 2 4 (embossed), 71. (blue, handwritten).

Bröhan-Museum Berlin, Porzellan Vol. 2, Berlin 1996, p. 46.

€ 500 - 700

639

Henry van de Velde
Eight dinner plates 'Whiplash', 1903/04

Ø 26.5 cm. Execution: KPM Meissen, before 1924. Porcelain, white, glazed, blue underglaze. Marked: button swords (blue, underglaze), artist's signet, T1 or 65 (embossed), 71 or 52 (blue, underglaze).

One plate with a small chip on the rim.

Föhl/Neumann, Henry van de Velde, Bd. III, Weimar 2016, p. 390.

€ 9.000 - 12.000



640

Henry van de Velde
Six dinner plates 'Whiplash', 1903/04

Ø 23 cm. Execution: KPM Meissen, before 1924. Porcelain, white, glazed, blue underglaze. Marked: button swords (blue, underglaze), artist's signet, 2 22 or R2 or 62 (embossed), 71. or 52 (blue, underglaze).

One plate with a chip under the rim.

Föhl/Neumann, Henry van de Velde, vol. III, Weimar 2016, p. 390.

€ 8.000 - 9.000





641



642

641

Konrad Hentschel
'Two children making sand molds',
1906 / before 1924

H. 11 cm, 24 x 13.3 cm. Execution: KPM Meissen, before 1924. Porcelain, white, glazed, polychrome overglaze. Marked: button swords (blue, under glaze), W 165 (incised), 125 (embossed), 68 (red, handwritten). Fingers of the girl's right hand retouched.

Meissen Manuscripts, Special Issue III, Hentschel's Children, State Porcelain Manufactory Meissen 1994, p. 6 f., p. 21, no. 12.

€ 2.500 - 3.500

642

Konrad Hentschel
'Two children making sand molds',
1906 / before 1924

H. 11 cm, 24 x 13 cm. Execution: KPM Meissen, before 1924. Porcelain, white, glazed, polychrome overglaze. Marked: button swords (blue, under glaze), W 165 (incised), 86 (embossed), 36 (black, handwritten).

€ 3.000 - 4.000

643

Adolph Amberg
'Egyptian Woman with Deer' from
the 'Wedding Parade', 1910

H. 26 cm. Executed by KPM Berlin, 1917. Porcelain, white, glazed, polychrome overglaze with gold. Base signed: AMBERG (embossed). Marked: scepter (blue, under glaze), orb (red, on glaze), iron cross (black, on glaze), 9445, date letter R, form signet (embossed), painter's signet (black and gold, handwritten). Tiny retouch. Hand restored.

Tiny retouch. Hand restored.

€ 1.000 - 2.000

644

Julius Vilhelm Guldbrandsen
Bowl 'Donatello' with decoration
'Hawthorn', 1905

H. 7.3 cm, Ø 14.2 cm. Execution: Rosenthal, Selb, c. 1910. Porcelain, white, glazed, polychrome underglaze decoration with hawthorn. Marked: manufacturer's mark (green, underglaze), Jul. V. Guldbrandsen, 130 (blue, underglaze).

Exh. cat. Rosenthal Hundert Jahre Porzellan, Kestner Museum Hannover 1982, p. 32 (in the text).

Image online.

€ 400 - 600

645

Ferdinand Liebermann
'Faun with Crocodile', 1913

H. 35 cm. Execution: Rosenthal, Selb, 1927. Porcelain, white, glazed, underglaze in brown and green tones. Base marked: FERD. LIEBERMANN. Bottom: manufacturer's mark (green, underglaze), K. 394 (embossed).

Cat. Kleinplastik und figürliches Kunsthandwerk aus den Beständen des Münchner Stadtmuseums 1880-1930, vol. 2, Munich 1974, p. 58/ 59, No. 67.

€ 900 - 1.200

646

Kurt Wendler
Centerpiece on six feet, 1921

H. 7.8 cm, 24.5 x 16.8 cm. Execution: Rosenthal, Selb, 1929. Porcelain, white, glazed, polychrome overglaze with gold. Bottom marked: Manufactory mark (green, under glaze), Kurt Wendler (green, on glaze), painter's signature Specht (orange).

Image online.

€ 200 - 300

647

Gerhard Schliepstein
'Night', 1926

H. 25 cm. Execution: Rosenthal, Selb branch factory, 1928. Porcelain, white, glazed.

Bottom marked: Manufactory mark in the cartouche (green, under glaze), G. SCHLIEPSTEIN 400 (embossed).

€ 400 - 600

648

Gerhard Schliepstein
'Panther with Ball', 1933

H. 11.5 cm. Execution: Rosenthal, Selb, c. 1933. Porcelain, white, glazed. Base signed: Schliepstein. Bottom marked: Echt Elfenbein manufactory mark (green, under glaze), K 1260 20 x (embossed).

Image online.

€ 200 - 300

649

Gerhard Schliepstein
'Beate', c. 1933

H. 15.5 cm. Execution: Rosenthal, Selb branch factory, 1940. Porcelain, white, glazed. Bottom marked: Manufactory mark in the cartouche (green, under glaze), G. SCHLIEPSTEIN 795 (embossed).

Image online.

€ 280 - 380

650

Therese Trethan
Four dinner plates, soup plate and
platter 'Geschweifte Form' - Agnes', 1903

Ø 26.5 cm, 40 x 26.8 cm. Execution: Ferdinand Selle, Burgau. Porcelain, white, glazed, with green underglaze. Marked: Manufacturer's mark (green, underglaze), model and painter's numbers.

Neuwirth, Österreichische Keramik des Jugendstils, Munich 1974, p. 437 (decor); Bröhan-Museum Berlin, Cat. Porzellan, vol. 1, Berlin 1993, pp. 307-310, Nos. 291, 259, 297.

€ 400 - 600

651

Therese Trethan
Two cups with saucers, creamer
and four cake plates 'Geschweifte
Form' - Agnes', 1903

H. 6-12.5 cm, Ø 20 cm. Execution: Ferdinand Selle, Burgau. Porcelain, white, glazed, with green underglaze. Marked: manufacturer's mark (green, underglaze), model and painter's numbers.

Two extra saucers, Ø 15 cm.

Neuwirth, Österreichische Keramik des Jugendstils, Munich 1974, p. 437 (decor); Bröhan-Museum Berlin, Cat. Porzellan, vol. 1, Berlin 1993, pp. 307-310, Nos. 291, 259, 297.

€ 600 - 800

647



643



650



651



653

652

Ernst Barlach
Vase with handles with Masks,
1904-08

H. 22 cm. Execution: Richard Mutz, Berlin. Stoneware, running glaze in cloudy white, pink and green over a brown background. Marked: Manufacturer's mark RICHARD MUTZ BERLIN, 1600 (stamped).

€ 2.500 - 3.500

653

Ernst Barlach
Punch with Bacchus Heads, 1904-08

With two handles. H. 32 cm, Ø 40 cm. Execution: Richard Mutz, Berlin-Liegnitz. Stoneware, alkali-white-gray running glaze over gray background. Marked: MUTZ KERAMIK (embossed).

€ 3.500 - 4.500

654

Peter Behrens
Vase with handles, 1903

H. 13.5 cm. Execution: Reinhold Merkelbach, Grenzhausen. Stoneware, copper-red reduction glaze. Marked: 1782 S (stamped).

Very rare!

Dry-von Zezschwitz (ed.), R. Merkelbach, special price list 1905, reprint Munich 1981, plate 79.

€ 2.000 - 3.000

655

Simon Peter Gerz, Hoehr
Beer jug, c. 1900

H. 33 cm. Stoneware, anthracite gray matt glaze, relief decoration. Pewter lid with thumb rest. Marked: manufacturer's mark, 1394 (embossed).

€ 400 - 500

656

Burg Giebichenstein
Vase, 1930s

H. 19.2 cm. Dark brown earthenware, oxide glaze, dark green with alkali white overflow glaze. Marked: castle mark (2x, embossed).

€ 500 - 600

657

Karl Karcher
Child's Head, 1903

H. 30.5 cm. Execution: Grand Ducal Majolica Manufactory, Karlsruhe. Earthenware. Blue running and sharp-firing glaze. Plinth signed and dated KARCHER 03 (embossed). Bottom: mark of the Majolica Manufactory (black).

€ 1.000 - 1.400



654



652



655



656



657



661

658

**Martha Katzer
Vase, 1937**

H. 18.5 cm. Execution: Majolikamanufaktur Karlsruhe, 1937-51. Majolica, glazed pink. Marked: Manufacturer's mark, 4676 (embossed).

Provenance: From the collection of Maria and Hans-Jürgen Heuser, Hamburg, no. 565. Image online.

€ 30 - 50

659

**Max Laeuger, Kandern
Vase, c. 1900**

H. 26.3 cm. Majolica, green glazed with black slip on a white background. Signed on the base: artist's signet MLK GESETZL. GESCHZT, MUSTER GESETZL. GESCHZT (embossed), 178. S (incised).

Chips in places.

Image online.

€ 350 - 450

660

**Max Laeuger, Karlsruhe
Vase, 1919**

H. 22 cm. Majolica, light green glaze on a white background, slip in green and brown. Marked: ML 3 2.2. 6 (incised).

Chips in places.

Image online.

€ 350 - 450

661

**Max Laeuger
Lidded vase 'Lemons', 1921-25**

H. 35 cm. Execution: Majolica Manufactory Karlsruhe. Majolica, yellow on white glaze, black and green slip painting. Marked: Manufactory mark, 1802, PROF. LÄUGER Made in Germany, Ec, 25 (stamped).

Flat chips to the stand.

€ 1.200 - 1.500

662

**Richard Riemerschmid
Punch bowl, c. 1906**

H. 31 cm. Made by Reinhold Merkelbach, Grenzhausen. Stoneware, relief decoration, cobalt blue. Unsigned.

With: bowl ladle, length 26.5 cm. Clear glass.

Exh. Richard Riemerschmid, Munich Municipal Museum, Munich 1982, p. 279 (fig.), p. 332, no. 412b.

Image online.

€ 200 - 400

663

**Ludwig Habich
Beer stein, 1899**

H. 23 cm. Execution: Jakob Julius Scharvogel, Munich. Stoneware, matt brown glaze, lip and base area speckled black-brown; inside glazed light gray. Base marked: workshop mark SKM, crane in a circle (embossed). Hinged pewter lid.

€ 800 - 1.200

664

**Jakob Julius Scharvogel, Munich
Bulbous Vase, c. 1900**

H. 17.6 cm. Stoneware, dark brown glaze, with green-blue running glaze from the lip down. Marked: SKM workshop signet, crane in a circle (embossed).

€ 500 - 700

665

**Jakob Julius Scharvogel, Munich
Small vase, c. 1900**

H. 11.5 cm. Stoneware, glazed dark brown with alkaline white running glaze from the lip down. Marked: workshop signet SKM, crane in a circle (embossed).

Image online.

€ 450 - 550

666

**Jakob Julius Scharvogel, Munich
Vase with handles, c. 1900**

H. 22 cm. Stoneware, glazed dark brown with alkali-white, slightly bluish running glaze down the lip. Marked: workshop signet SKM, crane in a circle (embossed).

€ 700 - 900



666

667

**Jakob Julius Scharvogel, Munich
Double Gourd Vase, c. 1900**

H. 20.2 cm. Stoneware, violet high-firing glaze with alkali-white, violet and blue efflorescent running glaze. Marked: SKM workshop mark, crane in a circle (embossed).

€ 600 - 800

668

**Jakob Julius Scharvogel, Darmstadt
15 decorative building ceramic
pieces, 1906-13**

Various sizes. Stoneware, flamed, brown-red oxide glaze on alkaline white ground. Marked: one square tile with manufacturer's embossing, each piece with handwritten marking: DD, three-digit number (turquoise green).

Image online.

€ 300 - 400

669

**Jakob Julius Scharvogel, Darmstadt
Tall vase, 1906-13**

H. 35.5 cm. Stoneware, glazed anthracite gray with alkali white, efflorescent crystal glaze. Marked: workshop signet crane in a circle, Ernst Ludwig signet (embossed).

€ 500 - 700

670

**Jakob Julius Scharvogel, Darmstadt
Vase with handles, 1906-13**

H. 24.4 cm. Stoneware, glazed brown with alkali-white, slightly beige running glaze down the lip. Marked: workshop signet crane in a circle, Ernst Ludwig signet (embossed).

Exh. cat. Jakob Julius Scharvogel, Museum Künstlerkolonie Darmstadt, Stuttgart 1995, no. 83.

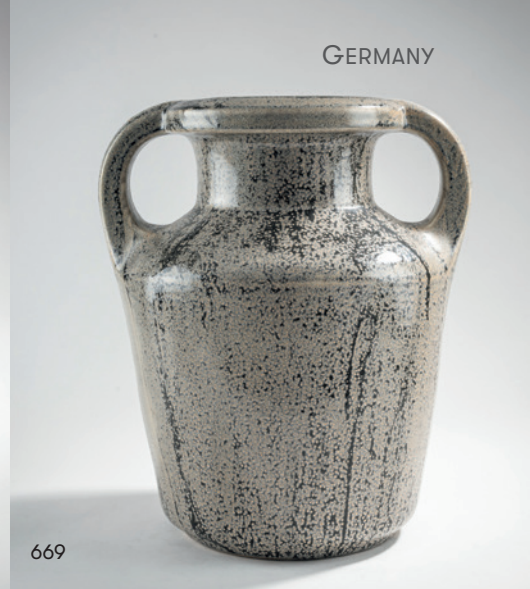
€ 700 - 900



670



667



669

671

**Jakob Julius Scharvogel, Darmstadt
Jug, 1906-13**

H. 24.5 cm. Stoneware, glazed brown with alkali-white, slightly beige running glaze down the lip. Marked: workshop signet crane in a circle, Ernst Ludwig signet (embossed), remains of an original paper label.

Exh. cat. Jakob Julius Scharvogel, Museum Künstlerkolonie Darmstadt, Stuttgart 1995, no. 67; also: p. 31: original photo from the Hessian State Exhibition, Darmstadt 1908.

€ 500 - 700

672

**Jakob Julius Scharvogel, Darmstadt
Vase with three handles, 1906-13**

H. 24.3 cm. Stoneware, glazed dark blue with alkali-white, slightly violet running glaze down the lip. Marked: workshop signet crane in a circle, Ernst Ludwig signet (embossed).

Exh. cat. Jakob Julius Scharvogel, Museum Künstlerkolonie Darmstadt, Stuttgart 1995, no. 56 (there Munich 1903).

€ 900 - 1.200



671



672

673

Erica von Scheel
Vase with handles, c. 1903/04

H. 19 cm. Execution: Reinhold Hanke, Höhr. Stoneware, salt-glazed with cobalt blue stripes. Marked: Artist's signet, 2111 (embossed).

Pecher, Henry van de Velde, Vol. 1, Munich 1981, p. 184: Original photograph from the World Exhibition in St. Louis, 1904.

€ 700 - 900



673

674

674

Erica von Scheel
Bowl with two handles, 1908

H. 8.8 cm, 16.3 x 15.8 cm. Execution: Reinhold Hanke, Höhr. Stoneware, glazed beige and dark brown, dark red inside. Marked: artist's signet, 2243 (embossed).

Superficial hairline crack of approx. 4 cm on the inside and outside walls.

Provenance: Erica von Scheel was the wife of Ivo Hauptmann. The bowl comes from the family of the second wife and widow of Ivo Hauptmann.

€ 1.500 - 2.500



675

675

Hamburg
Triptych 'Hamburg' 1967

110 x 69 x 3 cm. Stoneware, colored matt glaze, copper wire. Marked: Artist's signet: abstracted stork and 'P' 1967.

Greek/Roman deities associated with trade as well as insignia of the city.

€ 1.000 - 2.000

676

Bernhard Hoetger
Stool 'Horse', 1924-25

H. 67 cm, 80 x 39 cm. Oak and walnut wood.

The stool is shown - in a colored version - in a photo from an album with Hoetger's furniture designs from 1924/25 (a copy of the catalog is in the Böttcherstrasse archive in Bremen). The catalog shows furniture with carved ornaments, sculptural forms, executed in striking craftsmanship with visible tenons instead of screw or nail connections. The stools shown in the photo show a mixture of animal figure and everyday object. The function of this piece of furniture cannot be clearly explained, as with other Hoetger pieces; a dual function as a stool or storage table can be assumed. See Kerls, Bernhard Hoetger. Kunsthandwerk 1906-1935. Dissertation University of Bremen. Bremen 2007, p. 138 f., fig. 46.

€ 1.500 - 2.000



676



677

678

677

Munich
Side table / Bar table, c. 1905

H. 80.5 cm, Ø 60 cm. Wrought iron, blackened, table top made of wood and hammered brass.

€ 600 - 800

678

Richard Riemerschmid
Armchair, 1902

H. 78.5 cm, 61 x 54 cm. Execution: Dresdner Werkstätten, Hellerau. Oak wood, dark brown leather upholstery with upholstery nails.

Exh. cat. Richard Riemerschmid, Munich City Museum, Munich 1982, p. 121, cat. no. 90c.

€ 600 - 700

679

Johannes Boese
'Ketos sees Andromeda', c. 1890

H. 53.5 cm. Bronze, gilded and dark brown patinated, on a stone base. Signed on the base: J. Boese (incised).

€ 4.000 - 6.000



679



680

680
Edmund Gomansky
Rat, c. 1900

H. 28 cm (with base). Bronze, dark patinated. Stele signed: GOMANSKI (embossed). Black slate base.
€ 2.000 - 3.000

681
Fritz von Graevenitz
Grazing Deer, 1930

H. 74 cm. Bronze with green patina. Monogrammed on the rectangular plinth: FvG. One of 25 casts.
See the homepage of the Kunsthaus Bühler, Stuttgart; this animal sculpture was the first great success of F. v. Graevenitz.
€ 2.800 - 3.600



681



682

682
Ludwig Habich
Plaque 'Bacchus', c. 1901

Ø 33,5 cm. Execution: A. Brandstätter, Munich (ATTR.). Bronze, partially patinated green. Marked: L. HABICH (stamped).
€ 900 - 1.200



683

683
Bernhard Hoetger
Female nude, c. 1936

H. 19,2 cm. Bronze, dark brown patina. Base signed: B. Hoetger, Guss W.FÜSSEL BERLIN (embossed).
€ 2.500 - 3.500



685

684
Ernst Gustav Jaeger
'The Falconer', c. 1910

H. 23,3 cm, all: H. 27,7 cm. Bronze, cold painted. Carved ivory head, neck and hand, partially painted. Plinth signed: G. Jaeger, signet of Rosenthal & Maeder, Berlin. Black-green marble base.
Shayo, Statuettes of the Art Deco period, Woodbridge 2016, p. 131.
An EC certificate has been issued for this lot by the Department for Climate and Environmental Protection of the City of Munich, which allows objects with ivory to be marketed within the European Union.
€ 3.000 - 4.000

685
Fritz Klimsch
Bather, c. 1931

H. 49,5 cm. Bronze, dark patina. Signed: monogram FK, foundry mark KUNSTANSTALT WMF GEISLINGEN-ST (embossed).
Posthumous casting after 1960.
€ 7.000 - 9.000

686
Hans Laubner
Standing Female Nude holding Balls, c. 1930

H. 35,5 cm. Bronze, silver-plated. Plinth signed: H. LAUBNER (embossed).
€ 1.500 - 2.000



684



686



687



688

687

Roland Paris
'Jester King', c. 1925

H. 27 cm, 20 x 16.5 cm. Wood, carved, painted, residue of gilding. Signed: ROLAND PARIS (incised), original Frankfurt sales label.

Shayo, Roland Paris, Woodbridge 2016, 2nd flyleaf, p. 128.

€ 3.000 - 4.000

688

Roland Paris
'Jester', c. 1925

H. 29 cm, 29 x 14 cm. Wood, carved, painted, residue of gilding. Signed: ROLAND PARIS (incised), original sales label Frankfurt.

Shayo, Roland Paris, Woodbridge 2016, p. 131.

€ 3.000 - 4.000

689

Roland Paris
'Serenade', c. 1928

H. 31.5 cm (with base). Cold painted bronze, faces and hands made of carved ivory. Base signed: ROLAND PARIS (embossed). Marble base, ochre and black.

An EC certificate from the Senate Department for Mobility, Transport, Climate Protection and the Environment in Berlin is available, which allows the marketing of objects containing ivory within the European Union.

Shayo, Roland Paris, Woodbridge 2016, p. 143.

€ 3.500 - 4.500

690

Roland Paris
'Scholar Troll on Bowl', c. 1928

H. 15.5 cm, Ø 18 cm. Bronze, cold painted. Bowl signed: ROLAND PARIS (incised). Red and white marble bowl.

€ 450 - 650



690

QUITTENBAUM



691

691

Ferdinand Preiss
'Boy with Fish', before 1914

H. 17.5 cm (with base). Carved ivory, painted fish. Plinth signed: F. Preiss (incised). Green onyx base.

Fishing rod is lost.

An EC certificate from the Department of Climate and Environmental Protection of the City of Antwerp is available, which allows the marketing of objects containing ivory within the European Union. Shayo, Ferdinand Preiss, Woodbridge 2005, p. 125.

€ 1.500 - 2.000

692

Ferdinand Preiss
'Girl with a Box' and 'Boy with an Apple', before 1914

H. 15 and 15.3 cm. (With base) Carved ivory, painted box. Plinths each signed: F. Preiss. Green onyx base.

An EC certificate from the Department of Climate and Environmental Protection of the City of Antwerp is available, which allows the marketing of objects containing ivory within the European Union. Shayo, Ferdinand Preiss, Woodbridge 2005, p. 126; Catley, Art Deco and other figures, Woodbridge 1998, p. 263.

€ 2.000 - 3.000

693

Ferdinand Preiss
'Coyness', 1920s

H. 20,1 cm, H. 27,6 cm (with base). Carved ivory, partially painted. Plinth and base signed: F. Preiss (engraved). Composite base made of black marble and onyx. Also signed: F. Preiss.

Retouching on the right ankle down to the natural base.

Shayo, Ferdinand Preiss, Woodbridge 2005, p. 90.

An EC certificate has been issued for this lot by the Department for Climate and Environmental Protection of the City of Munich, which allows objects with ivory to be marketed within the European Union.

€ 9.000 - 12.000



692



693



689

102

ART NOUVEAU – ART DECO // 04 DECEMBER 2024

103

694

Victor Heinrich Seifert
'Drinking woman', 1905-10

H. 62 cm (with base: H. 71 cm). Bronze, dark patina. Plinth signed: Prof. VH Seifert (bossed). Black and white marble base.

€ 3.000 - 4.000



694

695

Victor Heinrich Seifert
Small Dancer, 1905-10

H. 24.6 cm (with base: H. 32 cm). Bronze, brown patina. Plinth signed: V. Seifert (embossed). Slate base.

€ 600 - 800



695

696

C. Singer, Augsburg
Relay racers, c. 1930

H. 25 cm, 25.5 x 11 cm. Bronze, dark patina. Plinth marked: C. SINGER AUGSBURG. Black gray marble plinth.

€ 700 - 900



696

697

Bernhard Sopher
Torchbearer, 1923

Naked male figure, blowing on a torch. H. 35 cm. Bronze, dark brown patina. Plinth signed and dated B. Sopher 1923 (bossed).

€ 2.500 - 3.500



697



698

698

Pierre Ambrogiani (1907 Ajaccio - 1985 Allauch)
'Fleurs vase blanc', presumably 1960s

Oil on canvas. 73.0 x 54.3 cm (canvas), 84.0 x 65.3 cm (frame). Signed lower right: Pierre Ambrogiani (oil), inscribed on the reverse of the canvas: fleurs vase blanc 20 P (oil) and inscribed on the stretcher frame, among other things: Galerie Paul Ambroise 6 Rue Royale 8. (black felt-tip pen). Framed. Not de-framed.

€ 1.000 - 1.500

699

Hanns Pellar (STYLE)
'In the Park', c. 1910

Oil on cardboard. 27 x 29 cm. Signed bottom right: MF. Framed (46.5 x 48.5 cm).

Image online.

€ 300 - 400



700

700

Fritz Kohlstädt
Landscape, 1956/57

Oil on panel. 60.5 x 50.5 (panel), 72.3 x 62.2 cm (frame). Signed lower left: F. Kohlstädt and dated: 1956 7 (oil). Framed.

Not de-framed.

€ 900 - 1.300



701

Rudolf Schlichter
'Eugenie Perrot', 1934

The portrait shows a middle-aged lady with her dark hair tied back, neatly dressed in a red and white checked blouse and adorned with detailed accessories, sitting in a green patterned wing chair. With her upper body leaning relaxed against the furniture and her hands calmly placed on top of each other, she looks directly at the viewer, although her face is slightly to her right. The direct gaze from the portrait subject to the viewer is a typical means of representation of New Objectivity, an art movement that developed in the 1920s as a realistic and socially critical response to Expressionism and the post-war period.

Rudolf Schlichter was one of the most important representatives of the style and his portraits in that style were known for their precise richness of detail and at the same time conveyed an intense psychological depth that reflected the inner turmoil and unease of the Weimar Republic. His distanced, almost dissecting style of representation made him one of the most prominent portrait painters of the New Objectivity, who depicted the inner life of his figures with a blunt clarity.

Oil on canvas. 70.5 x 50.5 cm (canvas), 79.5 x 59.5 cm (frame). Signed lower right: R. Schlichter and dated: (19)34 (oil). Verso an adhesive label from the Württembergischer Kunstverein and the Staatliche Kunsthalle Berlin. Framed.

Not deframed.

Provenance:

Since 1934 in the same private collection.

Exhibitions: Rudolf Schlichter, Staatl. Kunsthalle Berlin from April 1st - May 16th 1984/Württembergischer Kunstverein Stuttgart from May 23rd - July 1st 1984; Rudolf Schlichter - Eros and Apocalypse, Mittelrhein Museum Koblenz from November 14th 2015 to February 14th 2016 in cooperation with the "Talstraße" art association in Halle from April 28th - July 24th 2016.

Staatliche Kunsthalle Berlin (ed.): Rudolf Schlichter : [1890 - 1955]; Exhibition from 1 April - 16 May 1984, Staatl. Kunsthalle Berlin/23 May - 1 July 1984 Württembergischer Kunstverein Stuttgart, Berlin 1984, p. 146.

€ 18.000 - 25.000



702

Carl Strathmann
'The Rich Man and Poor Lazarus', c. 1895

Watercolor, gouache and gold on paper. 104 x 137 cm. Signed bottom right: C.STRATHMANN (watercolor). Framed behind glass in an aluminum frame.

Not de-framed.

The painting is in a private collection in Munich and has not been on public display since the exhibition 'Grotesker Jugendstil' at the Rheinisches Landesmuseum in Bonn in 1976. It was already shown in the annual exhibition in Vienna in 1899.

https://de.m.wikisource.org/wiki/Boetticher:Strathmann,_Carl Boetticher, Carl Strathmann, from the series Painters' Works of the Nineteenth Century, Vol. 2, Dresden (1901) 1944, p. 850, No. II.3. Vienna JA 99.

The counterpart, 'Der Traum' is part of the Ferdinand Neess collection in the Museum Wiesbaden.

Cat. Radikal Schön, Museum Wiesbaden, Wiesbaden 2019, p. 436, p. 599.

€ 28.000 - 33.000



703



704

703
Paul Haustein School
'Ikora'-Dose, c. 1929

H. 20 cm. So-called Ikora metal, brass, silver-plated, brown patinated, etched decoration. Marked: Ikora mark (embossed). Burschel/Scheiffele, WMF Ikora-Metall, Stuttgart 2006, p. 55.

€ 500 - 700

704
Hugo Leven (ATTR.)
Two Candlesticks, 1901/02

H. 42 cm. Execution: JP Kayser Sohn, Krefeld. Kayser pewter. Marked: oval factory mark KAYSERZINN, 4427 (stamped). Dietrich/Wagner, Kayserzinn, Stuttgart 2011, p. 234, no. 4427.

€ 600 - 700

705
Joseph Maria Olbrich
Wine jug, model for the Olbrich House at the Darmstadt Colony exhibition, 1901

Polygonal, slimly tapered body with straight handle over shield-shaped base. Hinged lid with thumb rest. H. 33.5 cm. Execution: Eduard Hueck, Lüdenscheid. Pewter, relief volutes and circles. Marked: oval factory mark EDELZINN E. HUECK, 1865, artist's signet (embossed).

Extremely rare!

Normal signs of age and use.

Exh. cat. Joseph M. Olbrich, Darmstadt 1967, no. 201; Exh. cat. Joseph M. Olbrich, Mathildenhöhe Darmstadt 1983, no. 413; Cat. Künstlerkolonie Mathildenhöhe Darmstadt, 1999, p. 188 f.

€ 2.200 - 3.200



705



706



707

706

Joseph Maria Olbrich
Butter dish and plate, 1901

H. 10.5 cm, Ø 13 cm; saucer, Ø 20.5 cm. Execution: Eduard Hueck, Lüdenscheid. Pewter, green glass insert. Underside marked: EDELZINN 1825 or 1861 E. HUECK, artist's monogram (relief).

Cf. cat. Museum Künstlerkolonie Darmstadt, Darmstadt 1990, p. 205, no. 316.

€ 450 - 650

707

Joseph Maria Olbrich
Jar, 1902/03

H. 21.5 cm. Execution: Gerhardt & Cie., Lüdenscheid. Pewter.

Signs of age and use.

Cf. cat. Zinn des Jugendstils, vol. 2, Neuss 1986, no. 267; exh. cat. Jugendstil, Europa-lia, Brussels 1977, no. 313.

€ 900 - 1.200

708

Richard Riemerschmid
Candlestick, 1897

H. 36 cm. Execution: Vereinigte Werkstätten, Munich. Bronze, polished. Marked on the base: Geschützt RR (embossed).

Exh. cat. Jugendstil, Europa-lia 77, Palais de Beaux-Arts, Brussels 1977, p. 300, no. 732; Exh. cat. Richard Riemerschmid, Munich City Museum, Munich 1982, p. 273, no. 278, with additional literature.

€ 1.500 - 2.000

709

Kayser & Co., Krefeld
Two candlesticks, 1902/04

H. 31.5 cm. Kayser pewter. Marked: oval factory mark KAYSERZINN 4465 5G (stamped).

€ 500 - 600

710

WMF, Geislingen
Two candlesticks with female figures, c. 1900

H. 48 cm. Britannia metal, silver-plated. Not marked.

WMF, catalogue 1906, reprint, Woodbridge 1988, p. 380.

€ 1.000 - 1.200



708

709



710



712

711
Winhart & Co., Munich
Decorative plate 'Peacock', c. 1905

Ø 22.5 cm. Copper sheet, burnished, polychrome enamel. Handwritten numbering on the bottom.

Image online.

€ 350 - 450

712
Wilhelm Binder, Schwäbisch Gmünd
Box, c. 1900

Silver 800, gold-plated inside. 299 grams. H. 10.5 cm, 13.4 x 9.6 cm. Stamped: 14706, German hallmarks 800, workshop signet.

Engraving: C. Sch. 1869.

€ 700 - 900

713
Adolph Amberg
Four-piece silver cutlery 'Four Seasons', c. 1903

Silver 800, gold-plated bowls. 205,56 grams. L. 19.5 cm. Execution: Bruckmann & Sons, Heilbronn. Stamped: German hallmarks 800 Bruckmann Eagle, Dutch import hallmark.

In original case of the Gallery S. van Osenbruggen & Son, Amsterdam.

Sänger, Das deutsche Silber-Bestech, Stuttgart 1991, p. 107.

€ 900 - 950



713



714

714
Bruckmann & Sons, Heilbronn
Four-piece tea service, c. 1930

Silver 835, zebbrano wood. Total 1,883.34 grams. H. 8.3-16.5 cm, 45.5 x 35 cm. Stamped: German hallmarks 835, Bruckmann eagle, Dutch import hallmark, model numbers 5, 2 60, 73 (2x).

€ 1.800 - 2.400

715
Gustav Memmert, Berlin (ATTR.)
Wine jug, c. 1900

Silver 900, green glass. 877 grams. H. 24.8 cm. Stamped: 900, M, unidentified mark, LESPUNES.

An similar piece is represented in an Austrian collection, stamped with the Bruckmann eagle.

€ 1.500 - 2.500



715



716

716
Germany
Goethe's Faust Part 1 with cover made of amber pieces, c. 1939

Bound in brown oilcloth with gold edges, front cover covered with pieces of amber and silver. With numerous black and white photographs of a performance of Faust by Hanns Holdt (1887-1944) and an original drawing for the „Prologue in Heaven“ signed Merz.

Presumably custom-made. With a dedication to the previous owner.

€ 500 - 700

717
Gumbel & Co., A.-G.
Mocha service, c. 1928

Silver 835, carved ivory. Total 1,122.38 grams. Mocha pot, cream jug, sugar bowl, height 7-17 cm and tray, 22.5 x 34 cm. Stamped: German hallmarks 835, workshop signet.

Engraved owner initials RBF.

An EC certificate has been issued for this lot by the Department for Climate and Environmental Protection of the City of Munich, which allows objects with ivory to be marketed within the European Union.

€ 2.500 - 3.500

718
Koch & Bergfeld, Bremen
Four-piece coffee service, c. 1900

Coffee pot, teapot, cream jug and sugar bowl. Silver 800, embossed iris decoration. Casein insulators. Total 1,831.54 grams. H. 11.8 - 28 cm. Stamped: workshop signet 800 German hallmarks, model numbers with letters.

€ 3.500 - 4.500



717



718



719

719
Koch & Bergfeld, Bremen
Three-piece coffee and tea service, 1903/04

Coffee pot, tea pot, sugar bowl. Silver, chiseled, bone. 2074 grams in total. H. 11-21 cm. Stamped: workshop signet, 950 German hallmarks, serial numbers 42902, 42903, 42904.

Sugar bowl gilded inside. Bottom with slight indentation.

Heitmann (ed.), Koch & Bergfeld, Hamburg 1999, no. Z 45 (sketch).

€ 1.800 - 2.800

720
Adolf von Mayrhofer, Munich
Prize cup 'Arco Schiessen 1909', 1909

Curved lid with a sculptural, antique archer drawing his bow. Silver 800, residue of gilding. 498.47 grams. H. 36.5 cm. Stamped: German hallmarks, Ch. Heider, 800. Pendant with malachite ball, inscribed: zum ARCO SCHIESSEN 1909 GEGEB. v. PROF. E. v. SEIDL.

Archer's arrow broken. Remnants of shellac varnish.

€ 2.500 - 3.500



720



721



723

721

Peter Behrens
Two table spoons and eleven dessert spoons '5100', 1901-04

Silver. 404 grams. L. 14.8-22 cm. Execution: MJ Rückert, Mainz. Stamped: RÜCKERT, workshop signet 800 German hallmarks.

Grotkamp-Schepers/Sänger, Bestecke des Jugendstils, Stuttgart 2000, p. 125, no. 17.

€ 600 - 700

722

Heinrich Vogeler
Six spoons from the 'Tulip cutlery', 1898/99

Silver 800, partially gold-plated. 80.51 grams. L. 108 mm. Execution: Wilkens & Söhne, Bremen. Stamped: workshop signet 800 German hallmarks.

Sänger, Das deutsche Silber-Besteck, Stuttgart 1991, p. 234.

Image online.

€ 350 - 450

723

Friedrich Adler
18 dessert spoons '152', 1903

Silver, partially gold-plated. 243 grams. L. 10.9 cm. Execution: MH Wilkens & Sons, Bremen. Stamped: workshop signet, 800 German hallmarks.

In original case: H. 3.5 cm, 28.5 x 23.5 cm.

Sänger, Das deutsche Silber-Besteck, Stuttgart 1991, p. 193.

€ 650 - 750

724

Ferdinand Richard Wilm
Candlestick, c. 1938

Four-flame. Silver 925. 698 grams. H. 18.5 cm, Ø 28.5 cm. Execution: H. J. Wilm, Berlin. Stamped: German hallmarks 925, additional mark, Berlin Bear, workshop signet HJ Wilm Berlin, FR (stamped).

€ 2.000 - 2.200



724



725

725
Germany
Brooch, c. 1905-10

Silver 800, moonstone cabochon, bone. 15.14 grams. Ø 39 mm. Stamped: workshop signet MP 800 (not identified).

€ 400 - 500



727

726
Germany
Compact, c. 1930

Silver 935, red gold. 111.03 grams. 10 x 63 x 63 mm. Stamped: 935, wing W (2x) for import to Austria.

€ 450 - 550

727
Patriz Huber
Brooch, 1900/01

Silver 935, five green agates, blue and white enamel. 8.25 grams. 58 x 23 mm. Stamped: artist's signet PH, workshop mark TF 935 DEPOSE.

Cf. exh. cat. Patriz Huber, Mathildenhöhe Darmstadt 1992, no. XXV b.

€ 2.200 - 3.200



728



726

728
Patriz Huber
Brooch with chrysoprase, 1901/02

Silver 935, chrysoprase. 7.92 grams. 21 x 40 mm. Execution: Theodor Fahrner Pforzheim. Stamped: artist's signet PH, workshop signet TF 935 DEPOSE.

Cf. cat. Theodor Fahrner, Schmuck zwischen Avantgarde und Tradition, Stuttgart 1990, p. 103, no. 157.

€ 2.200 - 3.200

729
Theodor Fahrner, Pforzheim
Brooch 'Butterfly', c. 1927

Silver 935, cord soldering, matt enamel. 12.12 grams. 34 x 48 mm. Stamped: TF 935.

Cf. cat. Theodor Fahrner, Schmuck zwischen Avantgarde und Tradition, Stuttgart 1990, p. 169 (drawing).

€ 600 - 700



729

730
Theodor Fahrner, Pforzheim
Necklace and brooch in a case, c. 1928

Silver 935, marcasite, aquamarine. Brooch 12.74 grams. 60 x 22 mm. Necklace 19.75 grams. 20 x 30 mm, L. 470 mm. Stamped: TF 935.

€ 700 - 900



730

731
Theodor Fahrner, Pforzheim
Fur clip, a 1928

Silver 935, cord soldering, matt enamel and bluish glass. 19.68 grams. 46 x 30 mm. Stamped: TF 935.

Glass with a small chip to one corner.

Cf. cat. Theodor Fahrner, Schmuck zwischen Avantgarde und Tradition, Stuttgart 1990, p. 214, No. 2.21.

€ 600 - 700



731

732
Theodor Fahrner, Pforzheim
Collier, c. 1930

Silver 935, marcasite, hematite and amazonite. 63.07 grams. 55 x 47 mm, L. 335 mm. Stamped: TF 935, Dutch import hall-mark, additional mark.

Cf. cat. Theodor Fahrner, Schmuck zwischen Avantgarde und Tradition, Stuttgart 1990, p. 202, no. 2.59.

€ 2.000 - 2.500



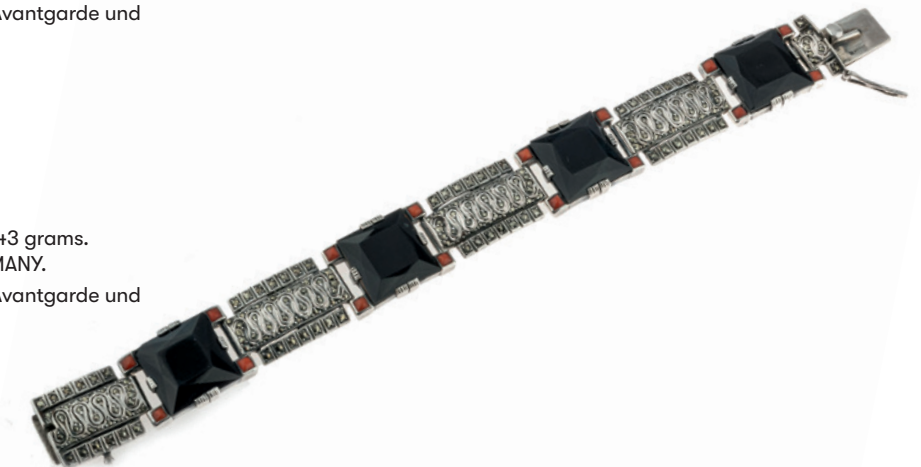
732

733
Theodor Fahrner, Pforzheim
Bracelet, c. 1930

Silver 935, hematite and coral cabochons. 40.43 grams. L. 203 mm. Stamped: TF 935, STERLING-GERMANY.

Cf. cat. Theodor Fahrner, Schmuck zwischen Avantgarde und Tradition, Stuttgart 1990, p. 195, no. 2.38.

€ 1.000 - 1.500



733

734
Theodor Fahrner, Pforzheim
Ring, c. 1930

Silver 935, marcasite, amazonite. 6.04 grams, ring size 57.5. Indistinctly stamped.

Image online.
€ 200 - 300

735
Theodor Fahrner, Pforzheim
Four-piece filigree parure, c. 1932

Necklace, bracelet, brooch and ring. Silver 925, gold-plated, green glass. Total 63.43 grams. 25 x 33 mm, L. 425 mm, Ø 55 mm, Ø 42 mm, RW 52. Stamped: FAHRNER, TF, 925.
€ 900 - 1.200



735

736
Léopold Gautrait (AFTER)
Pendant 'Peacock', c. 1902

Yellow gold 585, plique-à-jour, green and blue, 11 small and one large opal matrix. 22.44 grams. 62 x 66 mm. Execution: Lauer & Wiedmann, Pforzheim. Stamped: workshop signet LW, 585. Cf. Becker, Art Nouveau Jewelry, London 1985, p. 111, no. 108; vgl. Falk, Jugendstil-Schmuck aus Pforzheim, Stuttgart 2008, p. 122 f. („The Case of Lauer & Wiedmann“).

€ 1.600 - 1.800

737
Heinrich Levinger, Pforzheim
Collier de Chien, c. 1900

Silver 900, green and blue-violet plique-à-jour, three pearl shells, oval-cut aquamarine. 40.00 grams. 350 x 40 mm. Stamped: workshop mark HL, DEPOSE 900.

€ 1.000 - 1.200

738
Heinrich Levinger, Pforzheim
Pendant with chain, c. 1902

Silver 800, green enamel, pearl. 8.07 grams. Pendant: 32 x 34 mm, chain: L. 440 mm. Stamped: DEPOSE, 800, workshop signet. Enamel chipped in one area.

€ 500 - 600

739
Heinrich Levinger or Levinger & Bissinger, Pforzheim
Necklace (pendant), c. 1903

Silver 900, pearl shell, pearls, plique-à-jour. 12.71 grams. Pendant 54 x 45 mm. Stamped: workshop signet, DEPOSÉ, 900. Cf. Falk, Jugendstil-Schmuck aus Pforzheim, Stuttgart 2008, p. 210 (LB3) (different color scheme).

€ 800 - 1.200



736



737



738

740
Johann Michael Wilm, Munich
Ring and pendant with foliage, 1930s

Yellow gold 585, openwork foliage with granulation, four pearls with silvery luster, 7 rose-cut diamonds and old-cut diamonds. Necklace 11.16 grams, pendant 48 x 18 mm; ring 5.13 grams, ring size 49.5. Stamped: workshop signet, Munich hallmark, 585.

€ 3.000 - 3.800

741
Johann Michael Wilm (STYLE)
Ring with foliage, 1930s

Yellow gold 585, foliage with granulation, old cut diamond (0.13 ct., weight engraved on the ring band), green and pink tourmaline, pearl. 9.00 grams, ring size 59. Stamped: 585.

€ 600 - 800

742
Hans Christiansen
Three napkins 'Eleonora', c. 1904

67.5 x 71 cm. Execution: Marx & Kleinberger, Frankfurt. Linen damask. Not signed. Two with embroidered owner monogram VA. Buhrs (ed.), Mass & Freiheit, Munich 2010, pp. 60, 85.

Image online.

€ 150 - 250



741



739

743
Peter Behrens
Two napkins, c. 1904

61.5 x 64 cm. Execution: Simon Fränkel, Neustadt (ATTR.). Linen damask. Not signed. Embroidered owner monogram IK.

Image online.

€ 100 - 200

744
Peter Behrens
Two large napkins, before 1904

63 x 63 cm. Execution: Simon Fränkel, Neustadt (ATTR.). Linen damask. Artist's signet in the corners.

Embroidered owner monogram GK.

Image online.

€ 100 - 200

745
Max Benirschke
Tablecloth, 1906

160 x 192 cm. Execution: AW Kisker, Bielefeld. Linen damask. Not signed.

Buhrs (ed.), Mass & Freiheit, Munich 2010, p. 46.

Image online.

€ 100 - 200

746
Peter Behrens
Six napkins, 1903/05

64.5 x 64 cm. Execution: Gebrüder Kobusch, Bielefeld. Linen damask. Not signed.

Embroidered owner monogram R?K.

Buhrs (ed.), Mass & Freiheit, Munich 2010, p. 32 f.

Image online.

€ 300 - 400



740

747
Gertrud Kleinhempel
Three napkins 'square grid', before 1910

65 x 66 cm. Execution: Gebrüder Kobusch, Bielefeld. Linen damask. Not signed.

Embroidered owner monogram GLD.

Hardtwig writes that the design was probably created for the World Exhibition in Brussels in 1910. Buhrs (ed.), Maß & Freiheit, Munich 2010, p. 105.

Image online.

€ 100 - 200

748
Gertrud Kleinhempel
Tablecloth and six napkins 'square grid', before 1910

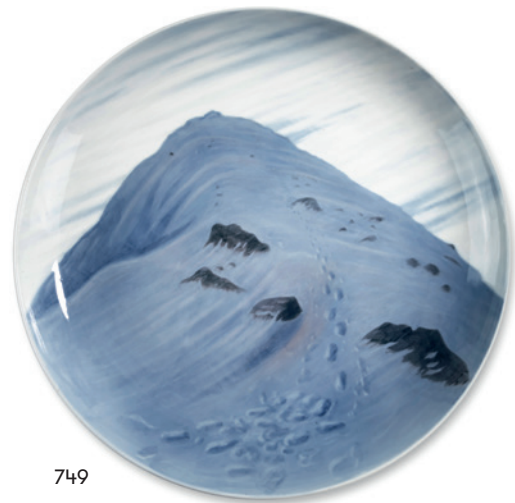
192 x 157.5 cm; 64.5 x 65.5 cm. Execution: Gebrüder Kobusch, Bielefeld. Linen damask. Not signed.

Embroidered owner monogram MC or B.

Hardtwig writes that the design was probably created for the World Exhibition in Brussels in 1910. Buhrs (ed.), Mass & Freiheit, Munich 2010, p. 105.

Image online.

€ 500 - 600



749

749

Harald Moltke
Large unique decorative plate 'Polar Explorer', 1911

Ø 42 cm. Execution: Bing & Grøndahl, Copenhagen, 1911. Porcelain, white, glazed, underglaze decoration in shades of blue and gray. Marked: manufacturer's mark (green, underglaze), B&G, artist's signet 11, 1743/23 (blue, underglaze).

€ 900 - 1.200

750

Effie Hegermann-Lindencrone
Unique urn, 1923

H. 32 cm. Execution: Bing & Grøndahl, Copenhagen. Porcelain, white, glazed, partially openwork. Underglaze predominantly in shades of blue and brown. Dense grass and plant decoration. Base marked: manufacturer's mark (green, under glaze), B&G, artist's signet, 1743/23 (blue, under glaze).

€ 2.000 - 3.000

751

Vilhelm Th. Fischer
Unique floor vase 'Magpie', 1925

Ovoid. H. 49 cm. Execution: Royal Copenhagen, 1925. Porcelain, white, glazed, underglaze predominantly in blue, gray and green. Signed on the base: waves with crown, artist signature 14-10-1925 (blue, underglaze), 2393, additional sign (incised).

€ 2.500 - 3.500



752

752

Knud Kyhn
Sitting Monkey, 1923

H. 20 cm. Faience, glazed alkaline white and cobalt blue. Signed and dated on the base: KK 23 (embossed).

€ 800 - 1.000

753

Patrick Nordstrom
Unique Vase, 1918

H. 9.8 cm. Execution: KPM Copenhagen. Stoneware, with dove-blue running glaze on white. Marked: artist's signet, wave mark 30-10 1918 II (blue, underglaze); collection label. Provenance: From the collection of Maria and Hans-Jürgen Heuser, Hamburg, no. P. 545.

Image online.

€ 400 - 500



754

754

Gotfred Rode
Large unique decorative plate 'Hens', 1924

Ø 41.5 cm. Execution: Royal Copenhagen, 1924. Porcelain, white, glazed, overglaze in shades of gray, blue and brown. Marked: Waves with crown, 19/ artist's signet GR 1924 (blue, under glaze).

€ 1.200 - 1.600

755

Vilhelm Th. Fischer
Unique jar 'Owl', 1924

H. 26 cm. Execution: KPM Copenhagen. Stoneware, glazed blue and alkali white. Marked inside the lid: Crown, waves, Vil. Th. Fischer 7-12-1924 (blue, handwritten)

€ 1.000 - 1.500

756

Jais Nielsen
Vase, 1925

H. 39.2 cm. Execution: KPM Copenhagen. Porcelain, white, relief, celadon green glaze. Decorated with images from the 4th Book of Moses, Chapter 20, Line 11. Marked: CUMQUE ELEVASSET MOYSES MANUM PERCUTIENS VIRGA BIS. Marked on the underside: JAIS, 2-3-1925, wavy lines (blue, under glaze), SK 8 2222 B (embossed).

Provenance: From the collection of Maria and Hans-Jürgen Heuser, Hamburg, no. 6036.

€ 1.000 - 1.400



750

751



755

756

757

Georg Jensen
Six coffee spoons 'Liljekonval', 1913

Silver 925, relief rose decoration. Total 115.13 grams. L. 123 mm. Execution: Georg Jensen, Copenhagen, 1915 - 1945-77. Stamped: STERLING DENMARK, various workshop signets, assay mark CF Heise.

In the original cardboard box.

Drucker, Georg Jensen, Atglen 2001, p. 265.

€ 600 - 800

758

Johan Rohde
Seven-piece fish cutlery 'Konge' - 'Acorn', 1915

Three forks, three knives, spoon. Silver 925. Total 349.33 grams. L. 172 163, 227 mm. Execution: Georg Jensen, Copenhagen, 1933 - 1945-77. Stamped: STERLING DENMARK, workshop signets.

Drucker, Georg Jensen, Atglen 2001, pp. 274 f.

€ 1.200 - 1.600



757



758

759

Georg Jensen

Cake server 'Magnolia', 1919

Silver 925. 68.82 grams. 199 mm. Execution: Georg Jensen, Copenhagen, 1945-77. Stamped: 42, GEORG JENSEN in beads, STERLING DENMARK.

Drucker, Georg Jensen, Atglen 2001, p. 266.

Image online.

€ 300 - 400

760

Georg Jensen
Serving fork 'Magnolia', 1919

Silver 925. 65.00 grams. 179 mm. Execution: Georg Jensen, Copenhagen, 1933-44. Stamped: 84, GJ, DENMARK STERLING.

Drucker, Georg Jensen, Atglen 2001, p. 266.

Image online.

€ 300 - 400

761

Harald Nielsen
Six fish knives 'Old Danish', 1947

Silver 925. 383.43 grams. L. 202 mm. Execution: Georg Jensen, Copenhagen, 1947-77. Stamped: STERLING DENMARK GEORG JENSEN in beads.

Engraved owner initials.

Drucker, Georg Jensen, Atglen 2001, p. 265.

Image online.

€ 600 - 800



762



763



764

762

Johan Rohde (ATTR.)
Two candlesticks '612', c. 1920

Silver 925. Total 208.82 grams. H. 70 mm. Execution: Georg Jensen, Copenhagen, 1945-77. Stamped: GEORG JENSEN in beads, DENMARK STERLING 612.

€ 2.500 - 2.800

763

Georg Jensen
Sugar shaker '91' c. 1920

Silver 925. 130.85 grams. H. 107 mm. Execution: Georg Jensen, Copenhagen, 1926-32. Stamped: STERLING DENMARK, Georg Jensen in beads with crown, GI 925 S, 91.

€ 1.600 - 1.800

764

Hans Hansen, Copenhagen
Candlestick, 1937

Silver 925. 1836 grams. H. 12 cm, Ø 39 cm. Stamped: ANNO 1937, workshop signet Hans Hansen, 925 S.

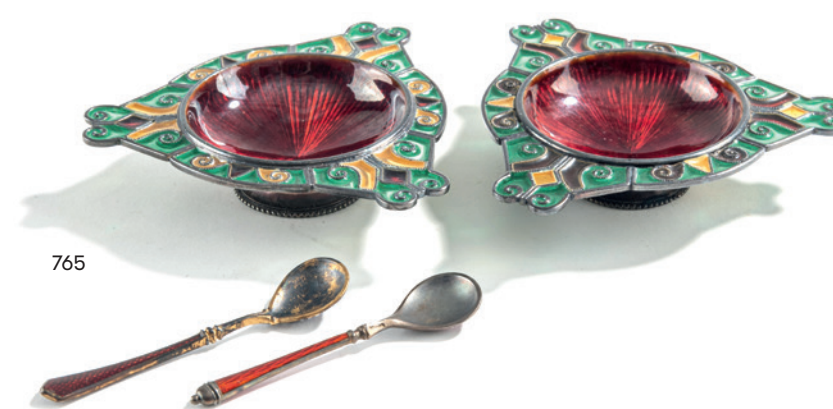
€ 3.200 - 4.200

765

Norway
Salt and pepper cellars with spoons, c. 1910

Silver, polychrome enamel. Total 114.03 grams. 76 x 70 - 77 x 72 mm, L. 57 - 60 mm. Stamped: 925 S, faint workshop signet, original paper label.

€ 500 - 700



765



766

766
Antip Ivanovich Kuzmichev,
St. Petersburg

Cigarette case and match case,
1899-1905

Silver 875, gold-plated, sapphire cabochon. Total 386.43 grams. H. 16 x 60 x 51 mm; 19 x 110 x 87 mm. Stamped: Kokoschnik mark, workshop signet AK. Inside of the cigarette case: Plaque (34 x 34 mm) in the shape of an Iron Cross with the inscription 'La journée du Poilu', 1915. Sign: R. LALIQUE (stamped). Applied owner initials.

€ 2.500 - 3.500

767
Russia
Malachite box, c. 1900

H. 5.5 cm, 10.2 x 7 cm. Malachite, cut, gold plated.

€ 600 - 800



767



768

768
Otto Holms, Lund
Pendant with Chain, 1942

Silver, rock crystal. 21.84 grams. 64 x 22 mm, L. 51 cm. Stamped: workshop mark, three-crown mark, S, Lund city mark, year mark Q8.

€ 400 - 500

769
Samuel Schellink
Vase, 1910

H. 9.9 cm. Execution: Haagsche Plateelbakkerij Rozenburg, The Hague. Eggshell porcelain, whitish body. Glaze painting in predominantly green and brown tones. Decorated with flowers and a rooster. Marked: Stork mark The Hague (dark gray stamp), date mark, window, order number 525, artist's signet (black).

€ 800 - 1.200

770
Samuel Schellink
Mocha cup and saucer with bird,
1908

H. 4.8 cm; Ø 13.5 cm. Manufactured by: Haagsche Plateelbakkerij Rozenburg, The Hague. Eggshell porcelain, whitish body. Glaze painting in predominantly green and violet tones. Decor with purple tulips and birds. Marked: The Hague stork mark (dark gray stamp), year mark, window, order number 751, artist's signet (black). Collection label.

€ 700 - 900

771
Archibald Knox
Pair of candlesticks, 1902-05

H. 27.5-28.5 cm. Execution: WH Haseler & Co., Birmingham, for Liberty & Co., London. Pewter. Marked: 9, Rd. 450548, 0538, TUD-RIC (stamped).

Martin, Archibald Knox, London 1995, p. 113.

€ 500 - 700



771

772
England
Rotating bookcase, c. 1895

H. 73 cm, 61 x 62 cm. Mahogany, marquetry of various woods.

€ 800 - 1.000

773
Great Britain (ATTR.)
Side table, c. 1900

H. 72 cm, 58 x 58 cm. Carved walnut, maple and bird's eye maple veneer.

Image online.

€ 400 - 500

774
JS Henry Sons Ltd., London (ATTR.)
Armchair, 1900-10

H. 116 x 58.5 x 55.5 cm. Execution: Liberty & Co., London (ATTR.). Mahogany, marquetry of various fruit woods, textile cover.

The same model is in the collection of the Victoria & Albert Museum in London.

€ 800 - 1.000



772



775

775
William Morris (STYLE)
Carpet, c. 1885 (design)

270 x 500 cm. Execution: presumably last third of the 20th century. Polychrome new wool, woven. Not marked.

€ 1.500 - 2.500



769



770

IMPRESS

MANAGING DIRECTOR AND AUCTIONEER

Askan Quittenbaum
Art Nouveau und Art Deco,
Murano Glass, Jewelry
+49 89 273702-113
a.quittenbaum@quittenbaum.de

DEPUTY MANAGING DIRECTOR

Dr. Claudia Quittenbaum
Public Relations, Murano Glass
+49 89 273702-111
c.quittenbaum@quittenbaum.de

Arthur Floss Dipl. Betriebswirt FH
Head of department Modern Design
+49 89 273702-110
a.floss@quittenbaum.de

EXPERTS

Faridah Younès M.A.
Head of department Art Nouveau
and Art Deco
+49 89 273702-115
f.younes@quittenbaum.de

Nadine Becker M.A.
Head of department Studio and
Art Jewelry
+49 89 273702-118
n.becker@quittenbaum.de

Laura Hille M.A.
Head of department Modern and
Contemporary Art
+49 89 273702-119
l.hille@quittenbaum.de

Dr. Marcus Oertel
Head of Rhineland Representative Office
Modern Art, Decorative Arts, Asian Art
m.oertel@quittenbaum.de

ASSISTANT

Veit Volwahren M.A.
+49 89 273702-121
v.volwahren@quittenbaum.de

Ava Boll B.A.
+49 89 273702-120
a.boll@quittenbaum.de

ACCOUNTING AND CATALOGUE-ORDER

Annette Ehrenhardt
+49 89 273702-117
accounting@quittenbaum.de

Ava Boll B.A.

LOGISTIC AND SHIPPING

Dirk Driemeyer
+49 89 273702-112
d.driemeyer@quittenbaum.de

M2 Logistik
+49 8121 223015
service@m2logistik.de

Mail Boxes Etc.
Völk Service GmbH
+49 89 30 666 006
mbe2545@mbe.de

PHOTOGRAPHS

Jochen Splett
Mirco Taliercio

DESIGN

Daniela Paringer, design & print GbR

PRINT AND PRODUCTION

W. Kohlhammer
Druckerei GmbH + Co. KG, Stuttgart





QUITTENBAUM

Kunstauktionen München

QUITTENBAUM Kunstauktionen GmbH

Theresienstrasse 60 · D-80333 Munich

Phone 089-27370210 · Fax 089-273702122

info@quittenbaum.de · www.quittenbaum.com

